



# Lenovo XClarity Integrator for Microsoft Azure Log Analytics Installation and User Guide



**Version 2.0**

## Note

Before using this information and the product it supports, read the information in [Appendix A “Notices” on page 11](#).

Second Edition (April 2023)

© Copyright Lenovo 2018, 2023.

**LIMITED AND RESTRICTED RIGHTS NOTICE:** If data or software is delivered pursuant to a General Services Administration “GSA” contract, use, reproduction, or disclosure is subject to restrictions set forth in Contract No. GS-35F-05925.

---

# Contents

<b>Contents</b> . . . . .	<b>i</b>	Software requirements . . . . .	7
<b>About this publication</b> . . . . .	<b>.iii</b>	Setting up Lenovo XClarity Integrator for Microsoft Azure Log Analytics . . . . .	7
Conventions and terminology . . . . .	iii	Importing the workspace template to Azure . . . . .	7
PDF and web resources . . . . .	iii	Configuring alerts . . . . .	8
<b>Chapter 1. Lenovo XClarity Integrator for Microsoft Azure Log Analytics</b> . . . . .	<b>1</b>	<b>Appendix A. Notices.</b> . . . . .	<b>11</b>
<b>Chapter 2. Planning and setting up Lenovo XClarity Integrator for Microsoft Azure Log Analytics</b> . . . . .	<b>7</b>	Trademarks . . . . .	12
		Important notes. . . . .	12



---

## About this publication

This book provides instructions for installing and using Lenovo XClarity Integrator for Microsoft Azure Log Analytics.

Lenovo XClarity Integrator for Microsoft Azure Log Analytics is a plug-in for Microsoft Azure Log Analytics that integrates with Lenovo XClarity Administrator to enable event management for Lenovo hardware.

---

## Conventions and terminology

Paragraphs that start with a bold **Note**, **Important**, or **Attention** are notices with specific meanings that highlight key information.

**Note:** These notices provide important tips, guidance, or advice.

**Important:** These notices provide information or advice that might help you avoid inconvenient or difficult situations.

**Attention:** These notices indicate possible damage to programs, devices, or data. An attention notice appears before the instruction or situation in which damage can occur.

---

## PDF and web resources

This product publication is available in PDF format.

Type of documentation	Version
Installation and User Guide	<ul style="list-style-type: none"><li>• 1.0.0</li><li>• 2.0.0</li></ul>

To view a PDF file, you need Adobe Reader. You can download it at no charge from the [Adobe Acrobat website](#).

Use the following resources to learn more about Lenovo XClarity Integrator for Microsoft Azure Log Analytics.

- [Lenovo XClarity Integrator for Microsoft Azure Log Analytics](#)
- [Azure Log Analytics](#)
- [Log Analytics alerting functionality](#)
- [Lenovo XClarity Administrator](#)
- [Azure Log Analytics pricing](#)



# Chapter 1. Lenovo XClarity Integrator for Microsoft Azure Log Analytics

Lenovo XClarity Integrator (LXCI) for Microsoft Azure Log Analytics is a plug-in for Microsoft Azure Log Analytics that integrates with Lenovo XClarity Administrator (LXCA). It manages events and finds potential problems of the Lenovo servers managed by LXCA, including events, alerts, user accounts, firmware updates, configuration, operating system deployments, power, thermal, and battery.

Lenovo XClarity Integrator solution includes six views that you can use to monitor events from your connected XClarity Administrator instances.

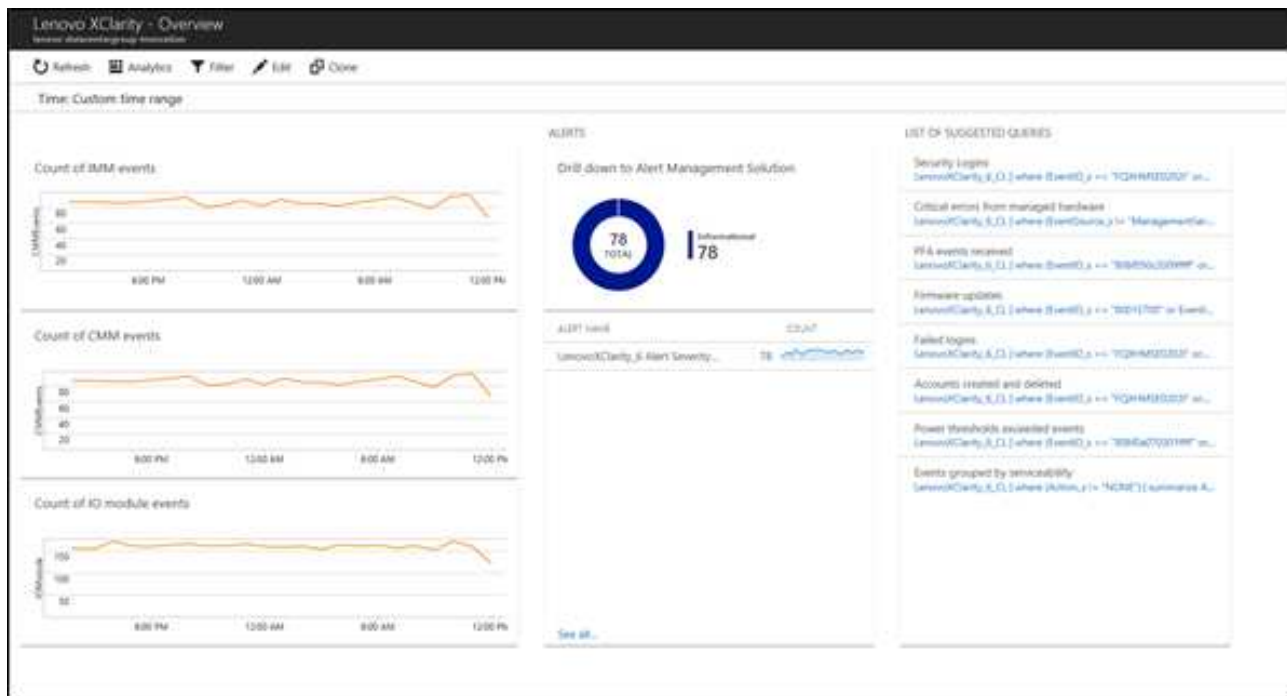
## Lenovo XClarity

This is the high-level dashboard that gives you the summary of all types of events coming from your XClarity Administrator instances. Drilling down from each graph takes you to corresponding Lenovo XClarity views.



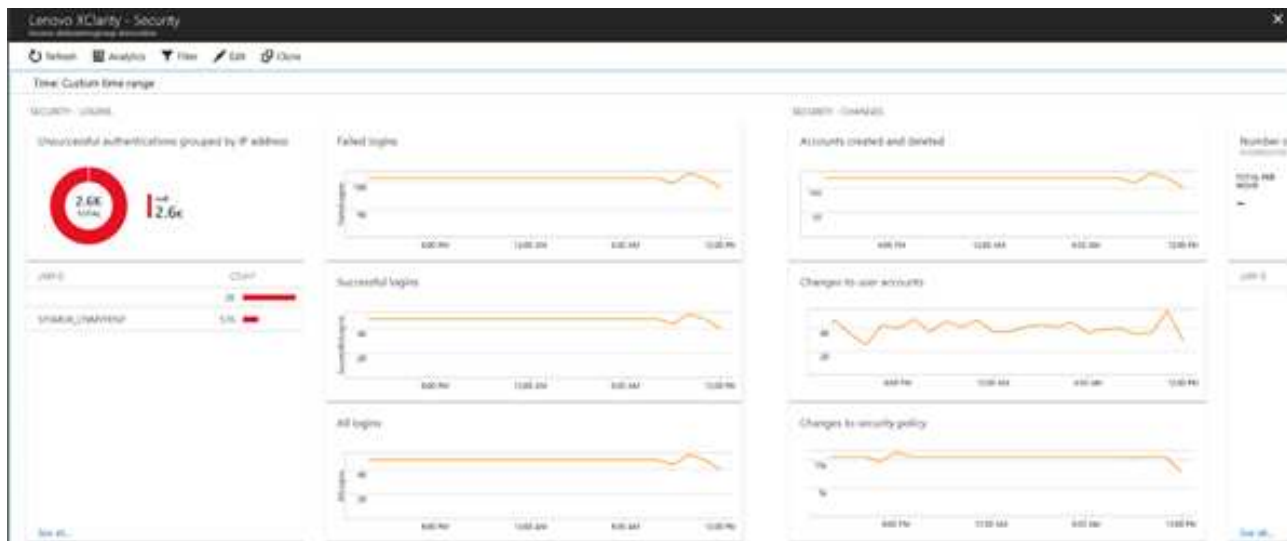
## Lenovo XClarity – Overview

This view provides a summary of all events and alerts in XClarity Administrator. It also provides a list of basic queries that you can use to drill down into various issues.



## Lenovo XClarity – Security

This view provides a summary of user logins and changes to user accounts and security policies.





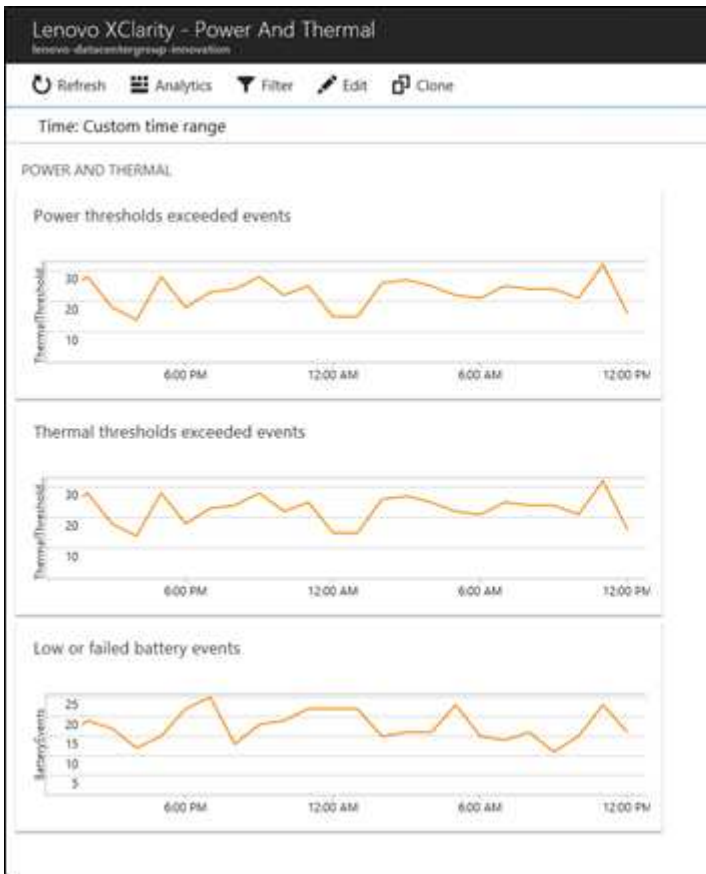
## Lenovo XClarity – Provisioning

This view provides a summary of provisioning tasks, including firmware updates, server configuration, and operating-system deployments.



## Lenovo XClarity – Power and Thermal

This view provides a summary of events that identify managed devices that exceeded power, thermal, and battery thresholds.



## Lenovo XClarity – Events Recommending Service

This view provides a summary of predicted failure alert (PFA) events, critical events from managed devices, and serviceability events.





---

## Chapter 2. Planning and setting up Lenovo XClarity Integrator for Microsoft Azure Log Analytics

Use this procedure to plan for and set up Lenovo XClarity Integrator for Microsoft Azure Log Analytics.

---

### Software requirements

The following requirements must be met.

- Lenovo XClarity Administrator v4.1 or later
- Azure Subscription
- Microsoft Azure Log Analytics workspace (which can be created during configuration)
- Azure Automation account linked to the Microsoft Azure Log Analytics workspace (which can be created during configuration)

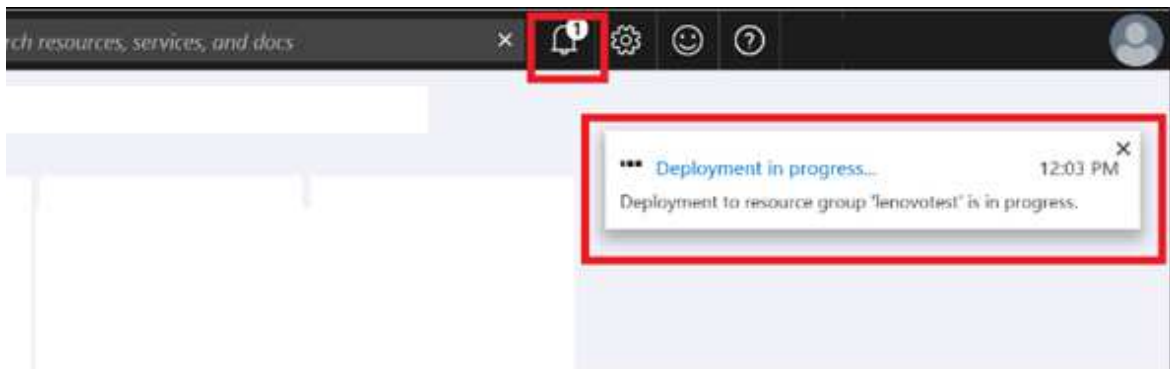
**Note:** The solution charges based on the Microsoft Azure Log Analytics pricing tier. The automation account does not create additional charges but is required only for configuration.

---

### Setting up Lenovo XClarity Integrator for Microsoft Azure Log Analytics

To connect the Lenovo XClarity Administrator instance to the Log Analytics workspace, users should apply changes separately on both products. Lenovo XClarity Integrator configuration enables users to collect events in the Log Analytics environment, and Log Analytics changes enable users to visualize data. Follow the steps listed below to get started.

- Step 1. Create the Microsoft Azure Log Analytics workspace. Refer to [“Importing the workspace template to Azure”](#) on page 7.
- Step 2. Check the deployment result in the Notifications area. Click the **Notifications** icon in the Azure toolbar.



- Step 3. Do one or more of the following:
  - Select the created workspace and view information in the workspace summary.
  - Pin any of the views on the Azure Dashboard for easy access. Right-click the title and select **Pin to Dashboard**.

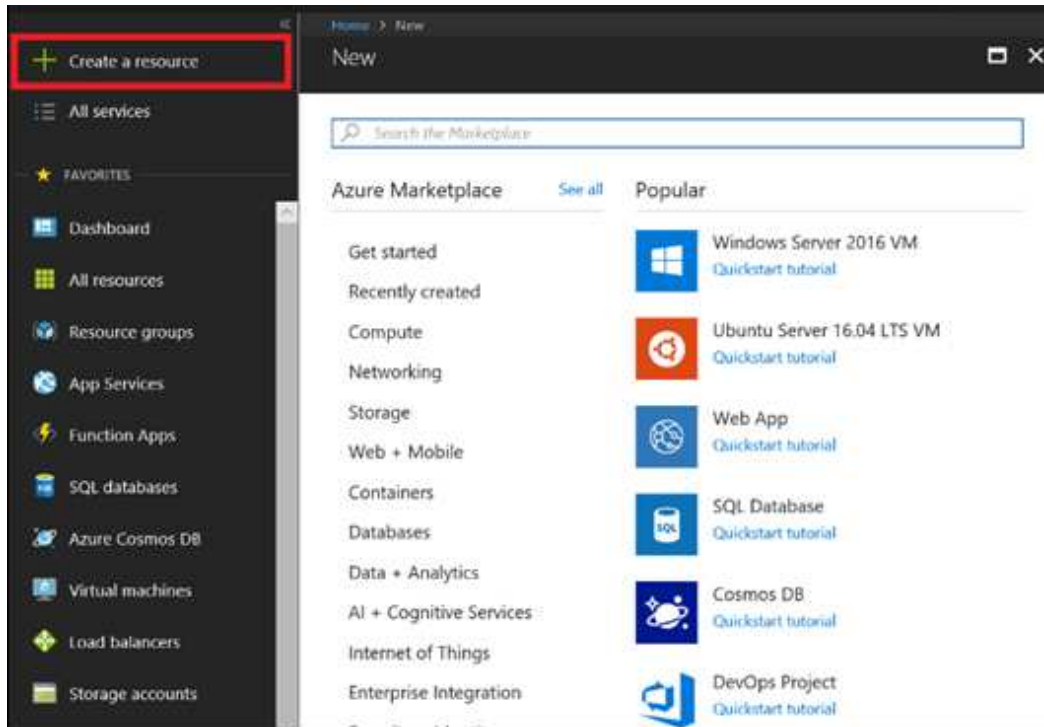
### Importing the workspace template to Azure

Users can download the workspace template from the Lenovo website and manually import the workspace.

- Step 1. Download the template from [Lenovo ThinkAgile XClarity Integrator for Microsoft Azure Log Analytics](#).

Step 2. Log in to Azure from [Azure web portal](#).

Step 3. Click **Create a resource**.



Step 4. Click **Template deployment** → **Build your own template in the editor**, and then import the template in local and save the template.

Step 5. Fill in the corresponding information on the project details page and click **Review + Create**.

**Note:** The workspace name cannot contain spaces.

Step 6. Click **Create**.

---

## Configuring alerts

Lenovo XClarity - Overview view integrates with the Log Analytics Alert Management solution. The Alerts blade shows alerts that are generated by your custom-defined rules.

For your alerts to show up in Lenovo XClarity - Overview view, you must name your alerts as “Lenovo\_XClarity\_<my\_alert\_name>” (for example, Lenovo\_XClarity\_Alert Severity)” The blade shows only alerts that match the “Lenovo\_XClarity” keyword.

## ALERTS

Drill down to Alert Management Solution



Informational  
**240**

ALERT NAME	COUNT	
LenovoXClarity_Alert Severity...	240	

[See all...](#)





---

## Appendix A. Notices

Lenovo may not offer the products, services, or features discussed in this document in all countries. Consult your local Lenovo representative for information on the products and services currently available in your area.

Any reference to a Lenovo product, program, or service is not intended to state or imply that only that Lenovo product, program, or service may be used. Any functionally equivalent product, program, or service that does not infringe any Lenovo intellectual property right may be used instead. However, it is the user's responsibility to evaluate and verify the operation of any other product, program, or service.

Lenovo may have patents or pending patent applications covering subject matter described in this document. The furnishing of this document does not give you any license to these patents. You can send license inquiries, in writing, to:

*Lenovo (United States), Inc.  
8001 Development Drive  
Morrisville, NC 27560  
U.S.A.  
Attention: Lenovo Director of Licensing*

LENOVO PROVIDES THIS PUBLICATION "AS IS" WITHOUT WARRANTY OF ANY KIND, EITHER EXPRESS OR IMPLIED, INCLUDING, BUT NOT LIMITED TO, THE IMPLIED WARRANTIES OF NON-INFRINGEMENT, MERCHANTABILITY OR FITNESS FOR A PARTICULAR PURPOSE. Some jurisdictions do not allow disclaimer of express or implied warranties in certain transactions, therefore, this statement may not apply to you.

This information could include technical inaccuracies or typographical errors. Changes are periodically made to the information herein; these changes will be incorporated in new editions of the publication. Lenovo may make improvements and/or changes in the product(s) and/or the program(s) described in this publication at any time without notice.

The products described in this document are not intended for use in implantation or other life support applications where malfunction may result in injury or death to persons. The information contained in this document does not affect or change Lenovo product specifications or warranties. Nothing in this document shall operate as an express or implied license or indemnity under the intellectual property rights of Lenovo or third parties. All information contained in this document was obtained in specific environments and is presented as an illustration. The result obtained in other operating environments may vary.

Lenovo may use or distribute any of the information you supply in any way it believes appropriate without incurring any obligation to you.

Any references in this publication to non-Lenovo Web sites are provided for convenience only and do not in any manner serve as an endorsement of those Web sites. The materials at those Web sites are not part of the materials for this Lenovo product, and use of those Web sites is at your own risk.

Any performance data contained herein was determined in a controlled environment. Therefore, the result obtained in other operating environments may vary significantly. Some measurements may have been made on development-level systems and there is no guarantee that these measurements will be the same on generally available systems. Furthermore, some measurements may have been estimated through extrapolation. Actual results may vary. Users of this document should verify the applicable data for their specific environment.

---

## Trademarks

Lenovo XClarity, Lenovo , and the Lenovo logo are trademarks of Lenovo in the United States, other countries, or both.

Azure, Microsoft, and Windows are trademarks of the Microsoft group of companies.

Other company, product, or service names may be trademarks or service marks of others.

---

## Important notes

Processor speed indicates the internal clock speed of the microprocessor; other factors also affect application performance.

When referring to processor storage, real and virtual storage, or channel volume, KB stands for 1 024 bytes, MB stands for 1 048 576 bytes, and GB stands for 1 073 741 824 bytes.

When referring to hard disk drive capacity or communications volume, MB stands for 1 000 000 bytes, and GB stands for 1 000 000 000 bytes. Total user-accessible capacity can vary depending on operating environments.

Lenovo makes no representations or warranties with respect to non-Lenovo products. Support (if any) for the non-Lenovo products is provided by the third party, not Lenovo.

Some software might differ from its retail version (if available) and might not include user manuals or all program functionality.



