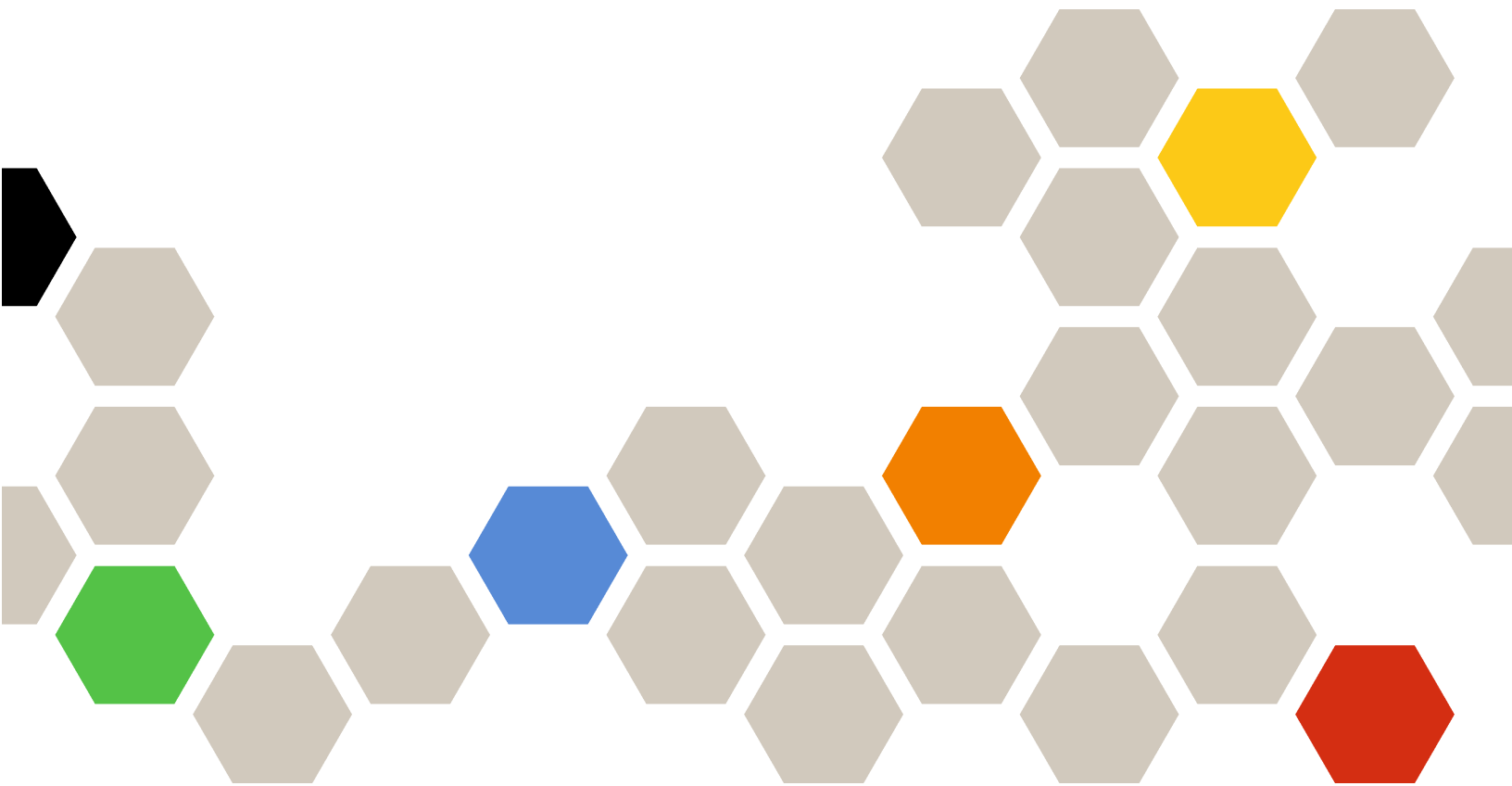




# Lenovo XClarity Integrator Installer for Microsoft System Center Installation and User's Guide



**Version 7.1.0**

## **Note**

Before using this information and the product it supports, read the information in Appendix B “Notices” on page 31.

**Eighth Edition (August 2017)**

**© Copyright Lenovo 2014, 2017.**

**Portions © Copyright IBM Corporation 2012, 2014**

LIMITED AND RESTRICTED RIGHTS NOTICE: If data or software is delivered pursuant to a General Services Administration “GSA” contract, use, reproduction, or disclosure is subject to restrictions set forth in Contract No. GS-35F-05925.

---

# Contents

<b>About this publication</b> . . . . .	<b>.iii</b>
Conventions and terminology . . . . .	iii
Web resources . . . . .	iii

<b>Chapter 1. Lenovo XClarity Integrator Installer for Microsoft System Center</b> . . . . .	<b>1</b>
--	----------

<b>Chapter 2. Hardware and software requirements.</b> . . . . .	<b>3</b>
---	----------

<b>Chapter 3. Installing components.</b> . . . .	<b>5</b>
--	----------

<b>Chapter 4. Maintaining components</b> . . . . .	<b>13</b>
--	-----------

Changing components . . . . .	13
Repairing components . . . . .	18

<b>Chapter 5. Uninstalling components</b> . . . . .	<b>23</b>
---	-----------

<b>Chapter 6. Troubleshooting</b> . . . . .	<b>27</b>
---	-----------

<b>Appendix A. Accessibility features</b> . . . .	<b>29</b>
---	-----------

<b>Appendix B. Notices.</b> . . . . .	<b>31</b>
---------------------------------------	-----------

Trademarks . . . . .	32
Important notes . . . . .	32



---

## About this publication

This User's Guide provides the latest information for the Lenovo Integrator Installer for Microsoft System Center.

---

## Conventions and terminology

Paragraphs that start with a bold **Note**, **Important**, or **Attention** are notices with specific meanings that highlight key information.

**Note:** These notices provide important tips, guidance, or advice.

**Important:** These notices provide information or advice that might help you avoid inconvenient or difficult situations.

**Attention:** These notices indicate possible damage to programs, devices, or data. An attention notice appears before the instruction or situation in which damage can occur.

---

## Web resources

The following web pages provide resources for understanding, using, and troubleshooting System x, BladeCenter servers, and systems management tools.

### System Management with Lenovo XClarity Solutions

This website provides an overview of the Lenovo XClarity solutions that integrate System x and Flex System hardware to provide system management capability:

- System Management with Lenovo XClarity Solution website

### Lenovo technical support portal

This website can assist you in locating support for hardware and software:

- Lenovo Support Portal website

### Lenovo ServerProven pages

Obtain information about hardware compatibility with Lenovo System x, BladeCenter, and IBM IntelliStation hardware.

- Lenovo ServerProven: Compatibility for BladeCenter products
- Lenovo ServerProven: Compatibility for Flex System Chassis
- Lenovo ServerProven: Compatibility for System x hardware, applications, and middleware

### System Management with Lenovo XClarity Solution

This website provides an overview of Lenovo XClarity solution, which integrates into System x M5 and M6, as well as Flex System, to provide system management capability.

- System Management with Lenovo XClarity Solution website



---

## **Chapter 1. Lenovo XClarity Integrator Installer for Microsoft System Center**

Lenovo XClarity Integrator Installer for Microsoft System Center provides a single download option to IT administrators to integrate the management features of the Lenovo x86 servers with Microsoft System Center. This offering expands Microsoft System Center server management capabilities by integrating Lenovo hardware management functionality, providing affordable, basic management of physical and virtual environments to reduce the time and effort required for routine system administration. It provides the discovery, deployment, configuration, monitoring, event management, and power monitoring needed to reduce cost and complexity through server consolidation and simplified management.





---

## Chapter 2. Hardware and software requirements

The following hardware, operating systems, and software are supported for this release.

### Hardware requirements

The Lenovo XClarity Integrator Installer tool has no special hardware requirements. It can be run on Lenovo and non-Lenovo servers, workstations, and laptops that support the Windows operating system.

### Supported operating systems

The Lenovo XClarity Integrator Installer tool is supported on the following Windows operating systems:

- Windows Server 2016
- Windows Server 2012
- Windows Server 2012 R2
- Windows Server 2008 R2
- Windows Server 2008 SP1/SP2 x64 (Enterprise Edition, Standard Edition)
- Windows Server 2008 SP1/SP2 (Enterprise Edition, Standard Edition)
- Windows Server 2003 SP2/R2 SP1 (Enterprise Edition, Standard Edition)
- Windows Server 2003 SP2/R2 x64 (Enterprise Edition, Standard Edition)

### Software requirements

The account that is used to install the Lenovo XClarity Integrator Installer tool on the host computer must have administrator privileges.



---

## Chapter 3. Installing components

Use the setup wizard to install components.

### Procedure

To install components, complete the following steps.

- Step 1. Unzip the Lenovo XClarity Integrator Installer package, and click the executable file `setup.exe` to open the setup wizard.  
The splash page for Lenovo XClarity Integrator Installer for Microsoft System Center opens, followed by a language selection list.



Figure 1. Initializing the setup wizard

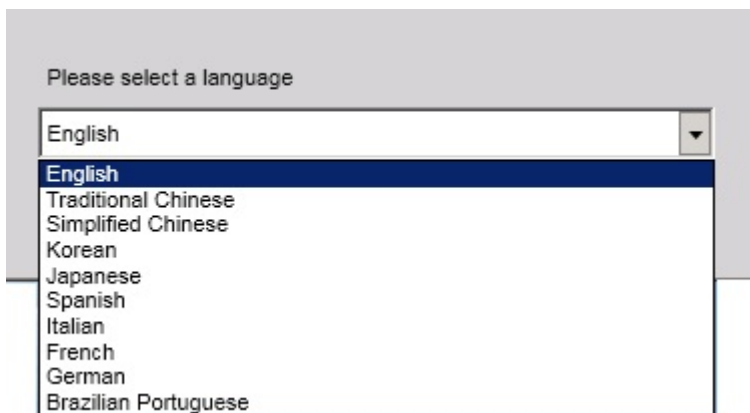


Figure 2. Language selection list

Step 2. Select a language for the Lenovo XClarity Integrator Installer.

**Note:** The components are installed in the same language that you select.



Figure 3. Welcome page

- Step 3. On the Welcome page, click **Next**.  
The Prerequisites page opens.

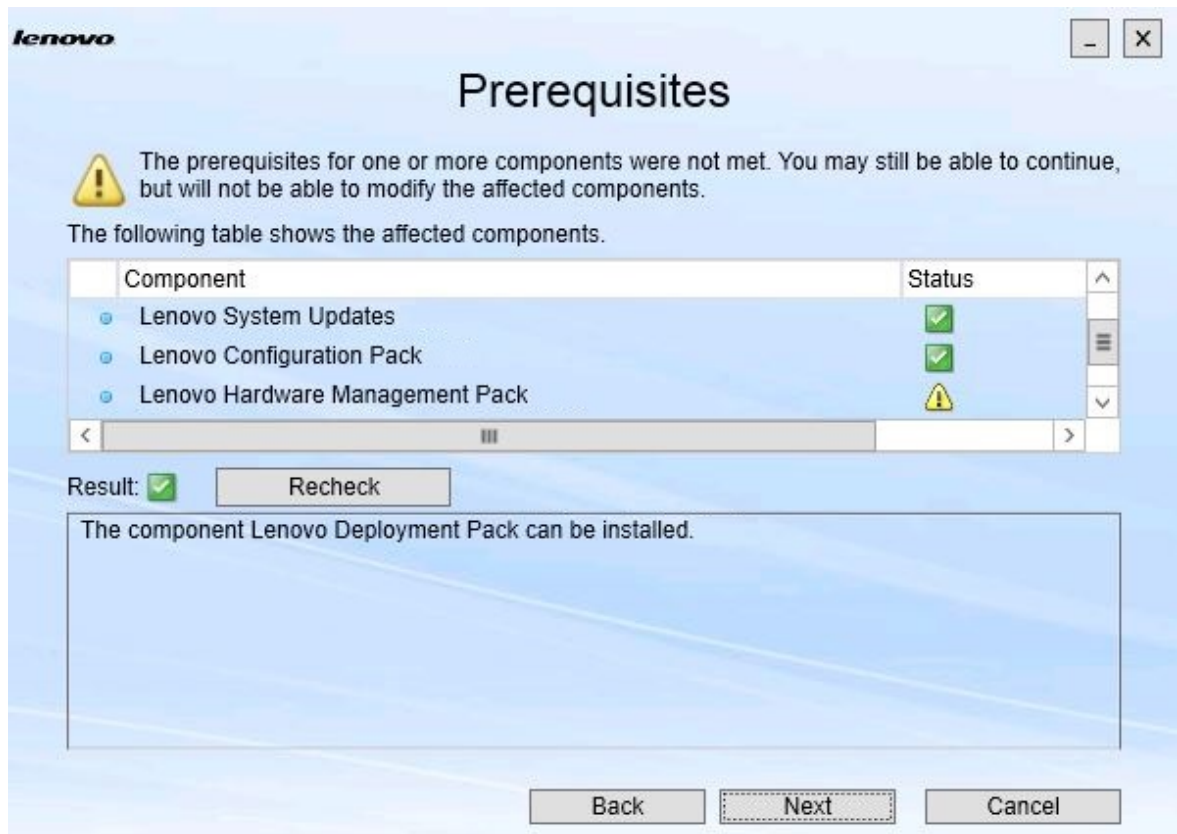


Figure 4. Prerequisites page

- Step 4. Before installing or upgrading components, review the Prerequisites page to make sure that all prerequisites are met. If a prerequisite is not met, the status icon next to it is a red x, the **Next** button is disabled, and the installation cannot continue.

Before continuing, change the installation environment and then check the prerequisites again.

Step 5. When all prerequisites are met, click **Next** to continue with the installation. The Install Suite Components page opens.

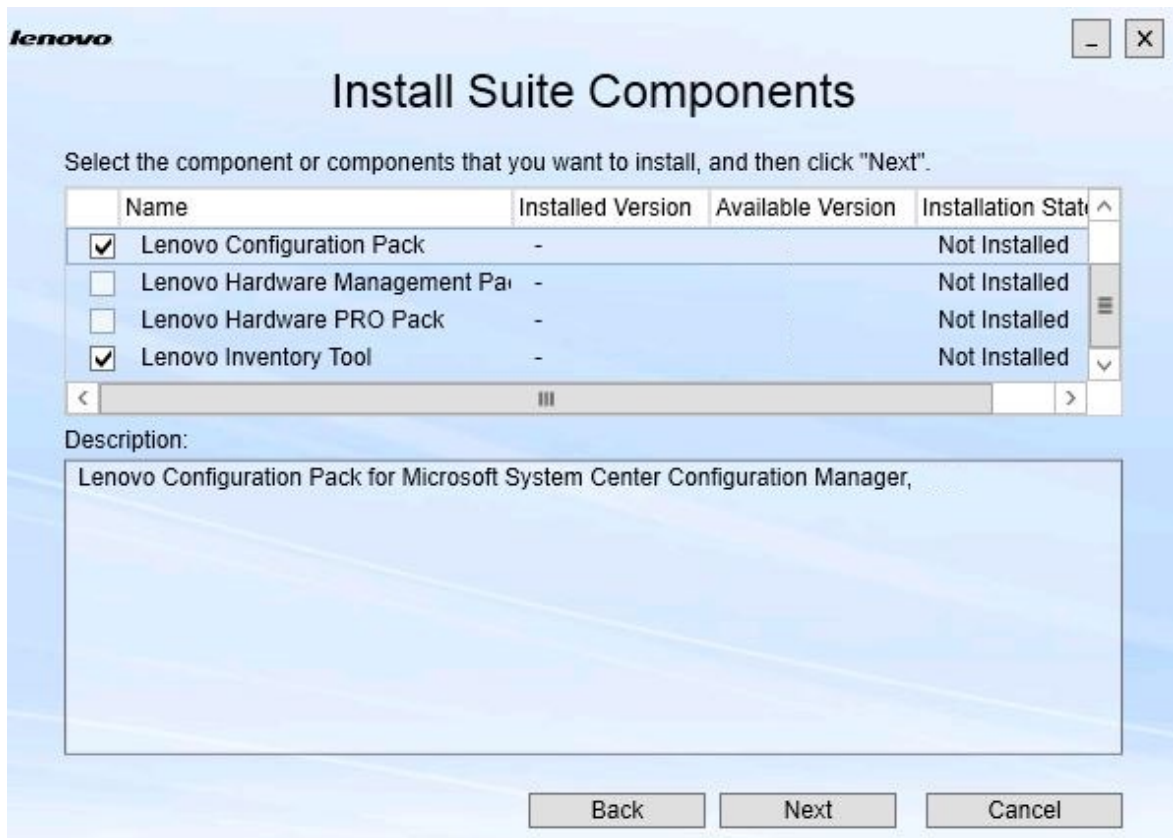


Figure 5. Select the components to install

The Install Suite Components page shows details, including the installed version, available version, and installation state for the components. The installed version is the version that has been installed on the system. The available version is the version included in the Lenovo XClarity Integrator Installer.

The installation state depends on the installed version and available version. There are four installation states:

- **Not Installed.** There is no installed version.
- **Installed.** The installed version is the same as the available version.
- **Upgrade.** The installed version is older than the available version.
- **Cannot Install.** The installed version is newer than the available version.

If a prerequisite for a component has not been met or if the installation state is **Cannot Install**, the related check box is disabled. This state means that there is no available action for this component. The reason is displayed in the description area.

- Step 6. Select one or more available components and click **Next**.  
The Confirmation page opens.

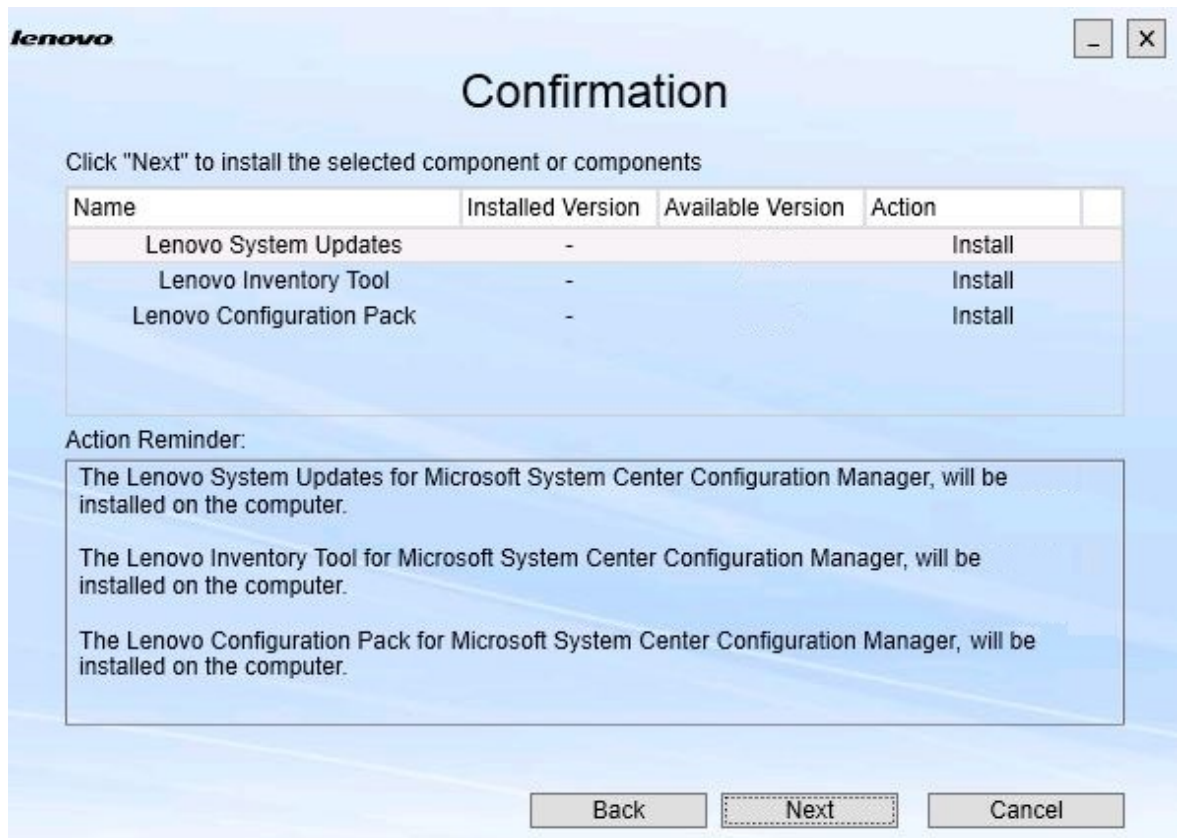


Figure 6. Confirmation of components

The Confirmation page summarizes information that you must confirm before starting to install, repair, upgrade, or uninstall a component. It shows the actions that will be implemented.

When a component is selected, the related information is displayed in the **Action Reminder** area.

- Step 7. To start the action indicated, click **Next**.  
The installation wizard status is displayed.

The installation wizard starts the process, and each component is processed one by one by its respective installation application.



Figure 7. InstallShield Wizard status



Step 8. To stop the installation that is in progress for all remaining components, click **Cancel**. The installation for the component running when you click **Cancel** will continue, while the installation of all remaining components is canceled. The following message is displayed.

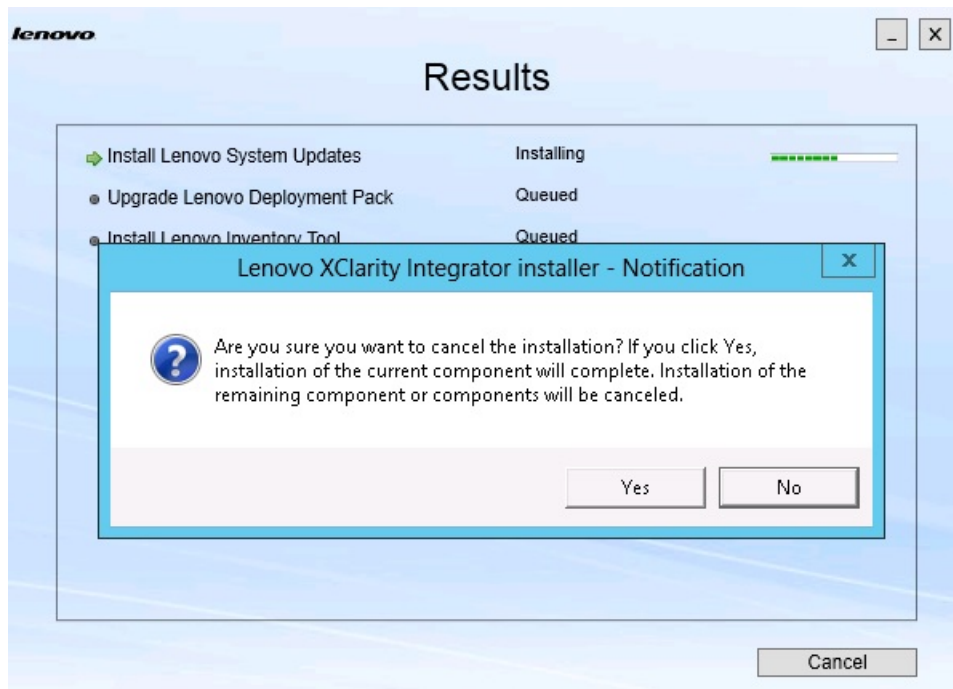


Figure 8. Message asking if you want to cancel the installation

To cancel the installation, click **Yes**. To continue with the installation, click **No**.

When the installation process completes, the Results page opens.

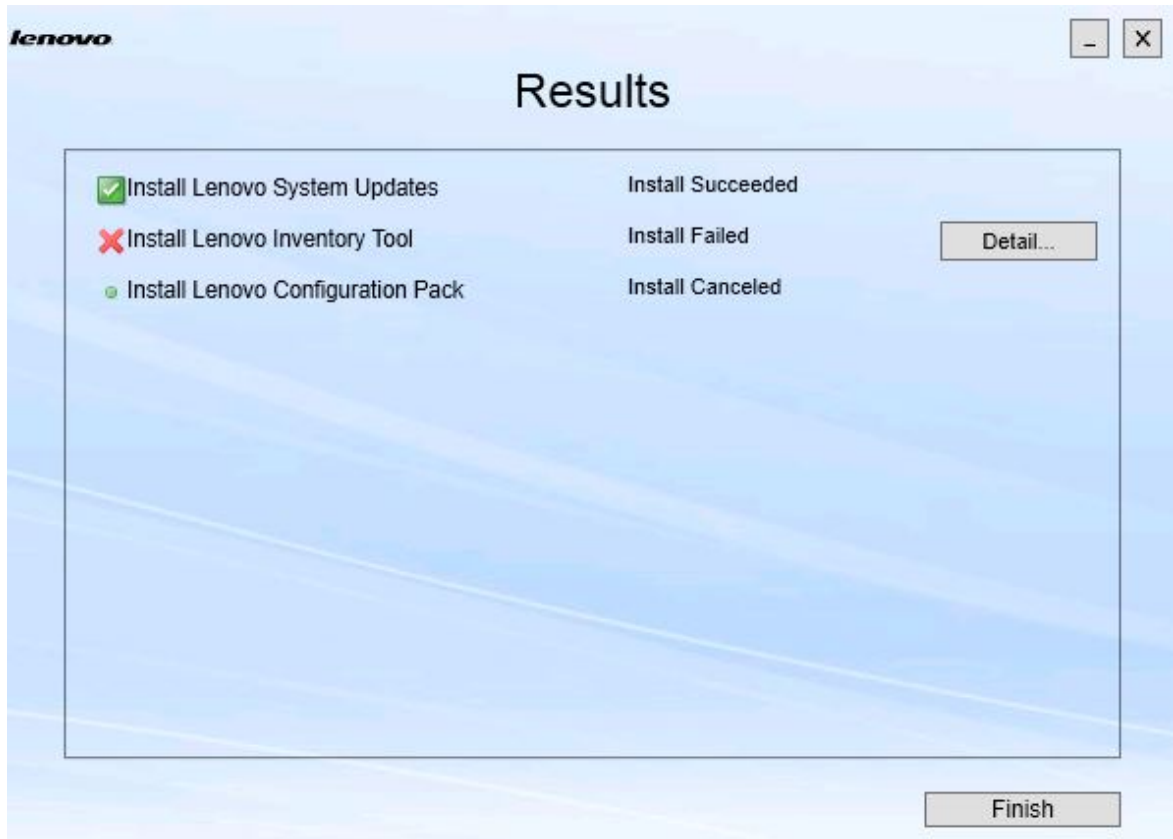


Figure 9. Installation results page

The Results page shows the results of the installation. If an action fails to install, it will be designated with an **X** icon. To open the log file for more information about the problem, click **Detail**.

Step 9. To complete the wizard, click **Finish**.

---

## Chapter 4. Maintaining components

If components were previously installed by Lenovo XClarity Integrator Installer, the Maintenance page opens when you start the Lenovo XClarity Integrator Installer.



Figure 10. Maintenance page

From this page, you can change, repair, and uninstall features.

---

### Changing components

Use the Change option to add, remove, and update a component.

**Procedure**

- Step 1. On the Maintenance page, click **Change**.  
The Prerequisites page opens.

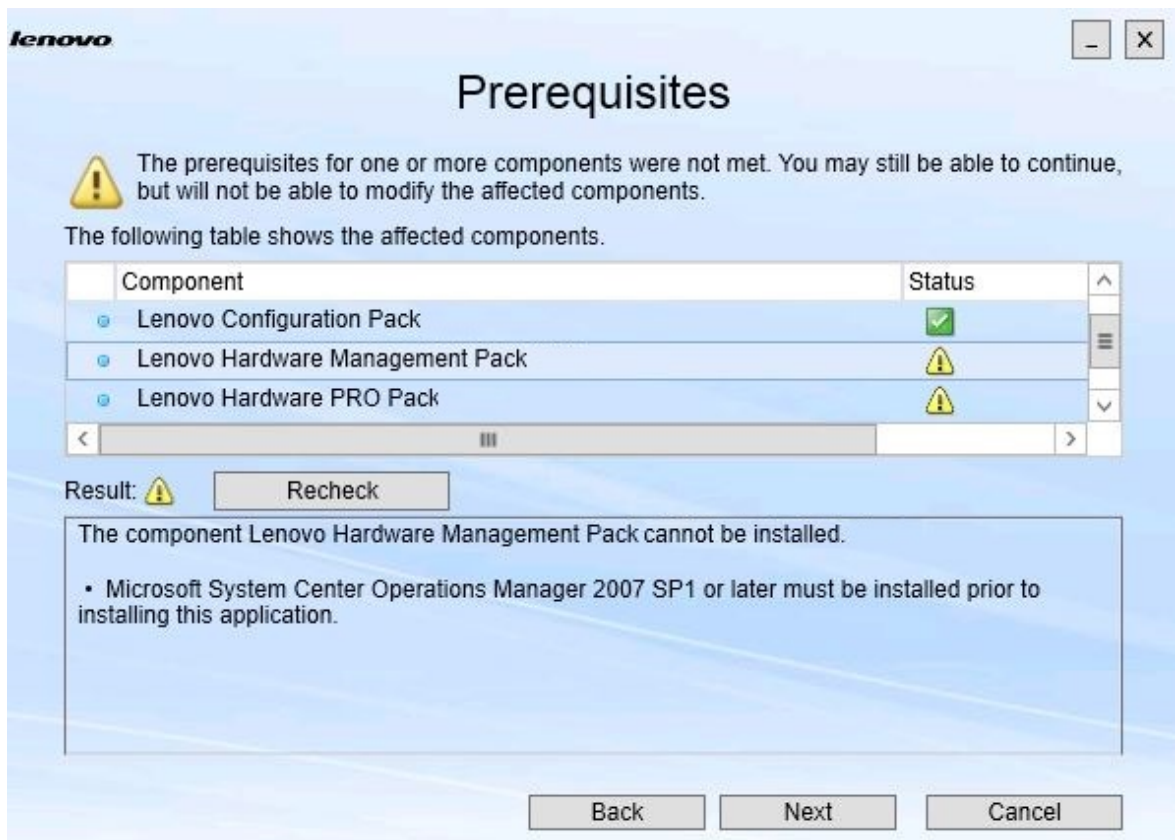


Figure 11. Prerequisites

Step 2. Ensure that you have met the prerequisites for the components, and click **Next**. The Add/Remove Suite Components page opens.

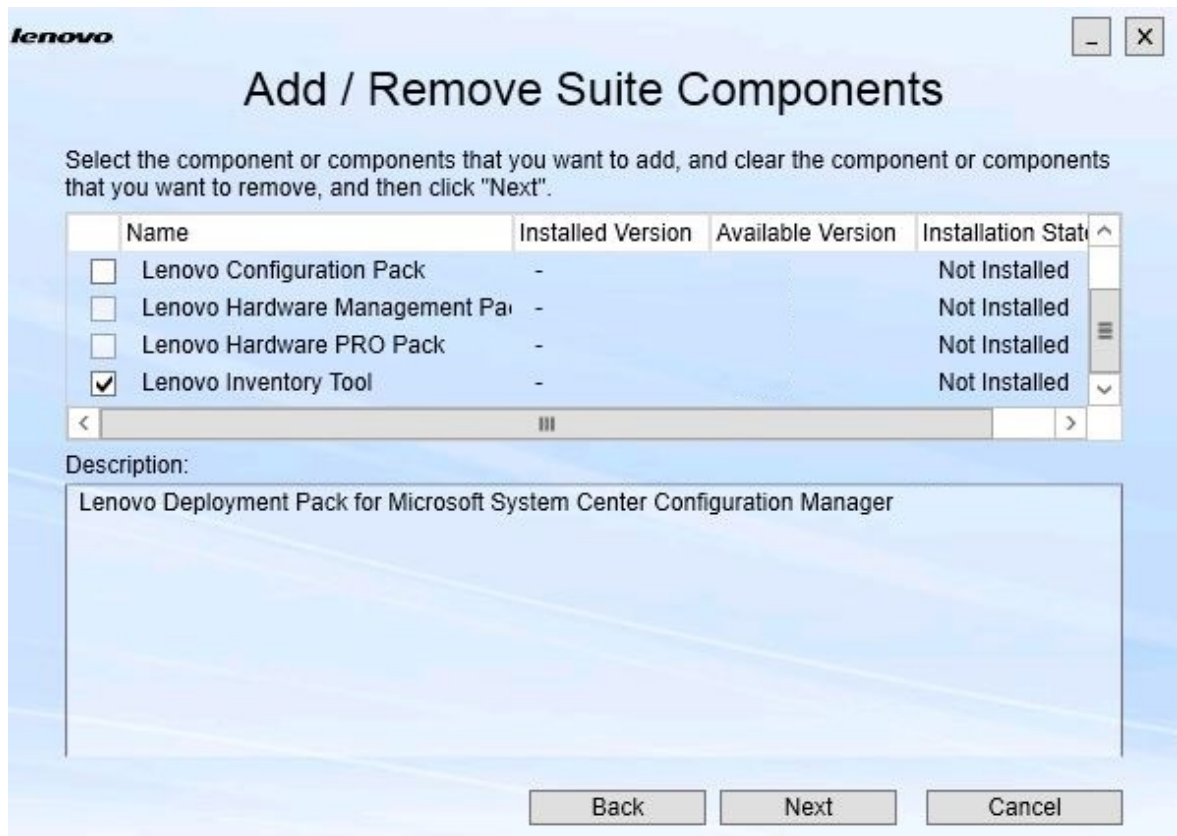


Figure 12. Add and remove suite components

If a component has been installed, its respective check box is selected and the location destination is disabled. You cannot change it.

If an older version of the component exists, you can install the upgraded version after prerequisites are met by selecting the check box for that component.

If the check box for a component is disabled, you cannot install it. There are two reasons why a component might be inaccessible:

- A newer version of the component exists on the target computer.
- Prerequisites for the component have not been met.

Step 3. On the Add/Remove Suite Components page, either uninstall, install, or upgrade a component.

- **Uninstall a component.** Clear the check box for the component, and click **Next**. A message is displayed asking you to confirm the uninstallation process. Click **Yes** to uninstall the component.
- **Install a component.** Select the check box for the component, and click **Next**.
- **Upgrade to a newer version of the component.** Select the check box for the updated component, and click **Next**. The Confirmation page shows the information for the new version.

The Confirmation page opens after you perform any of the actions listed above.

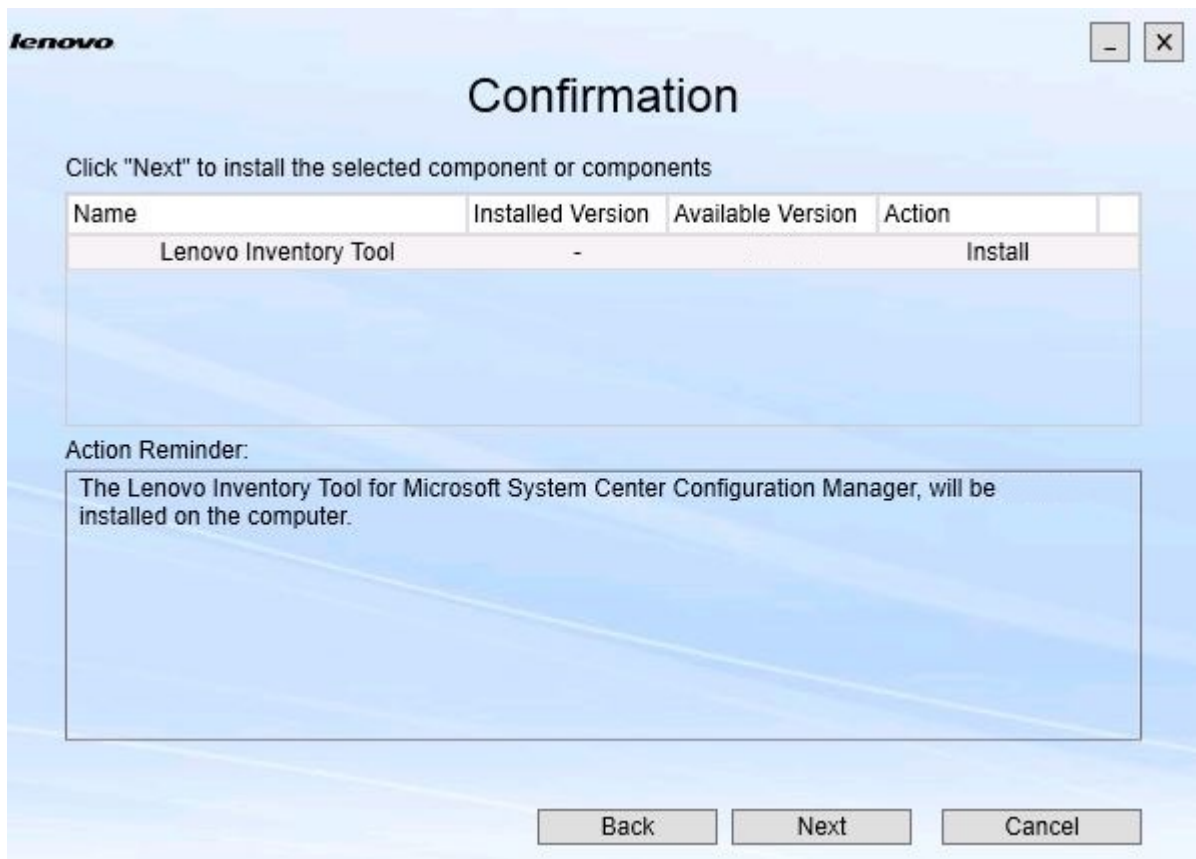


Figure 13. Confirmation page

- Step 4. To start the action indicated, click **Next**.  
The installation wizard status window opens.

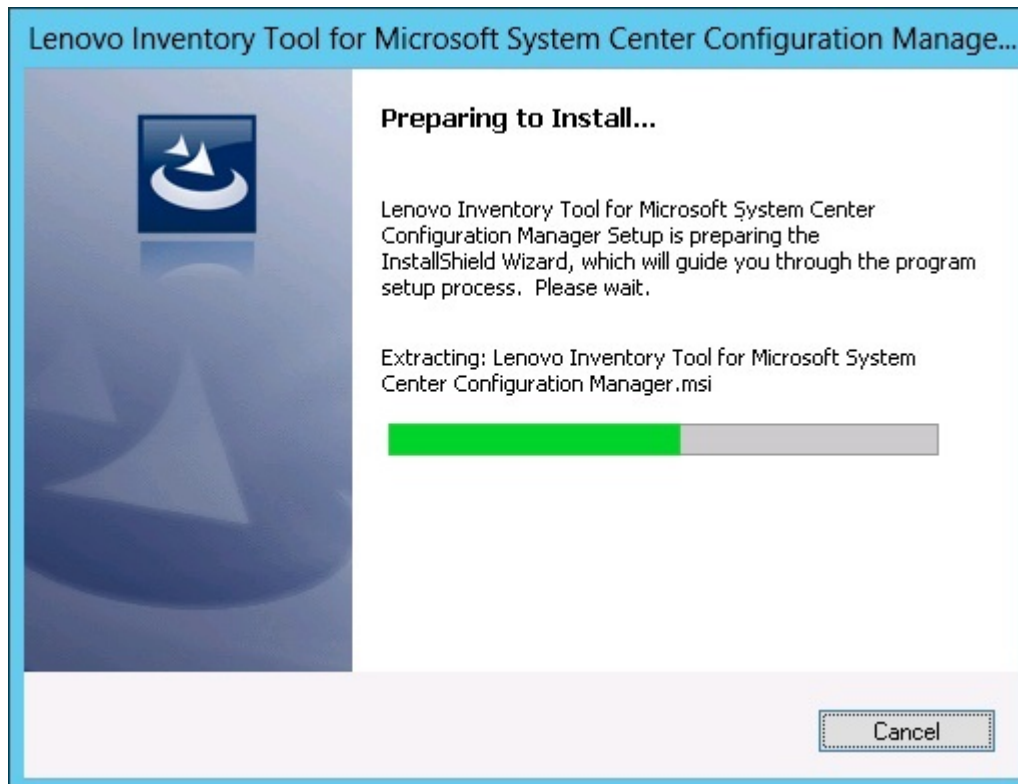


Figure 14. InstallShield Wizard status

The installation wizard starts, and the components are installed one at a time through their respective installation applications.

When the installation process completes, the Results page opens and indicates whether the installation was successful or not.

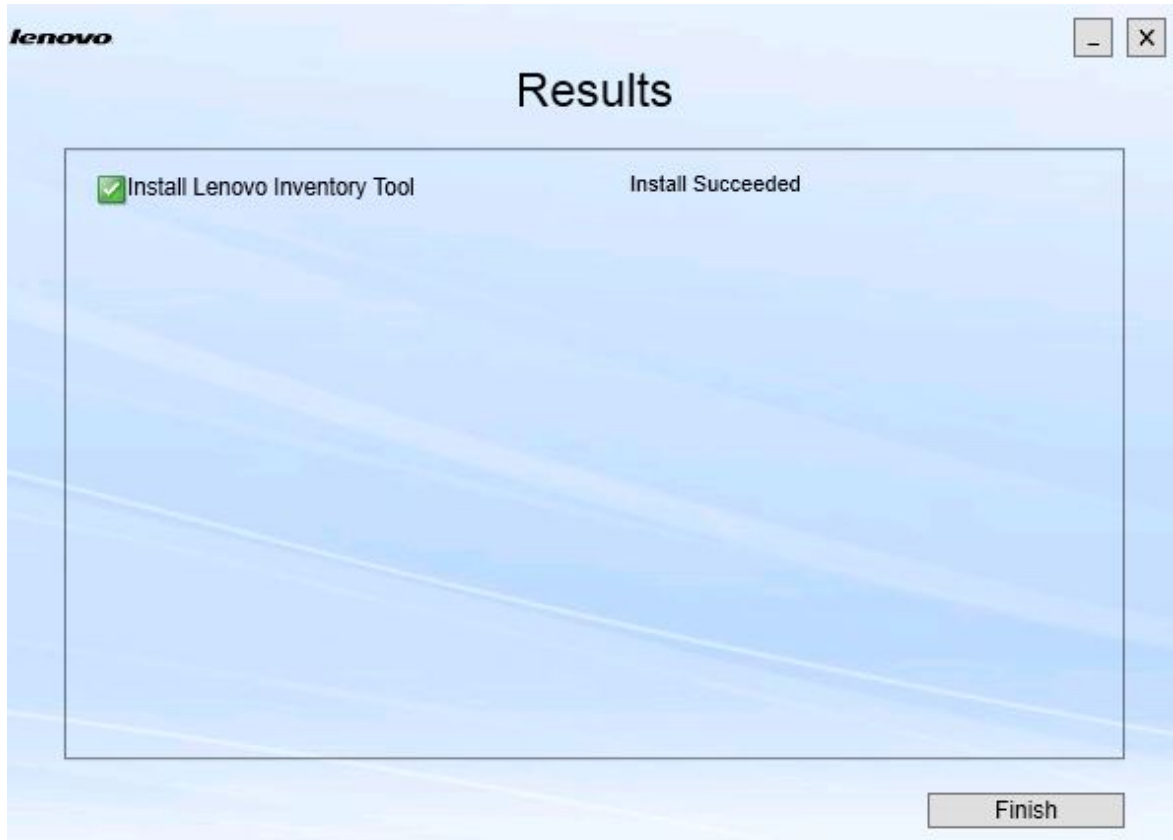


Figure 15. Installation results

- Step 5. Optional: If an action does not complete successfully, the **Detail** option is presented, which opens the log file.
- Step 6. When you are ready to exit the wizard, click **Finish**.

---

## Repairing components

Use the Repair option to repair installed files, registry values, and other items for an installed component.

The user interfaces for the Repair option and the Change option are basically the same. On the Repair Suite Components page, for instance, the components you can repair are listed, as shown on the Repair Suite Components page. Uninstalled components are disabled.



**Procedure**

- Step 1. From the Maintenance page, select **Repair**.  
The Repair Suite Components page opens.

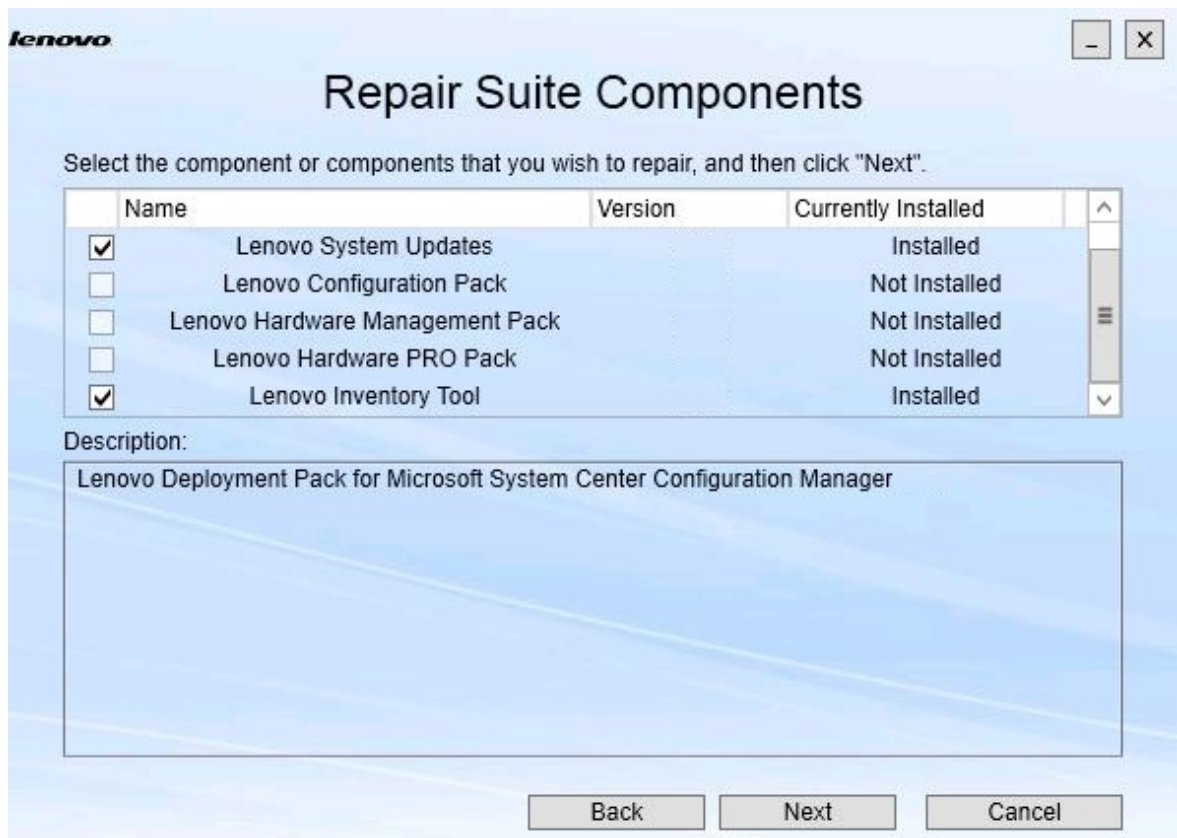


Figure 16. Repair Suite Components page

- Step 2. Select the check box for the component that you want to repair, and click **Next**. The Repair Confirmation page opens.

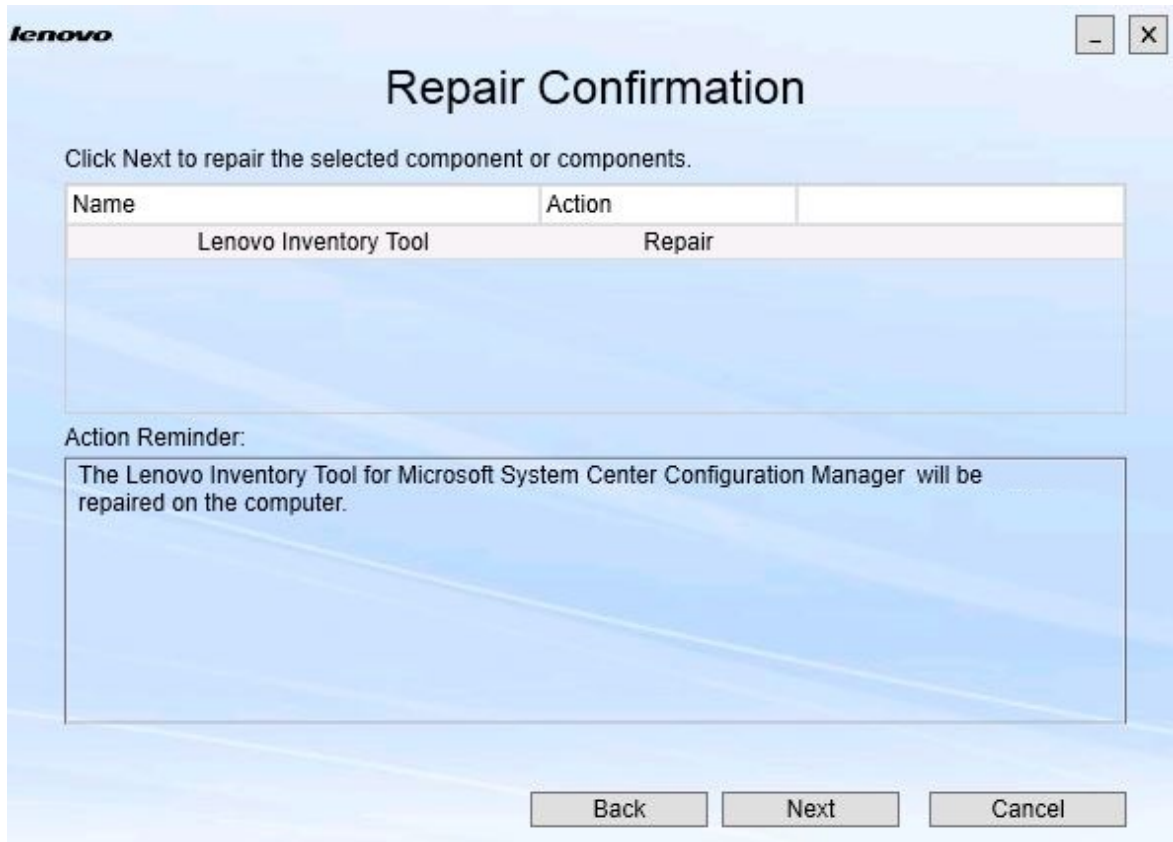


Figure 17. Repair Confirmation page

Step 3. To start the repair action, click **Next**.  
The installation wizard opens.

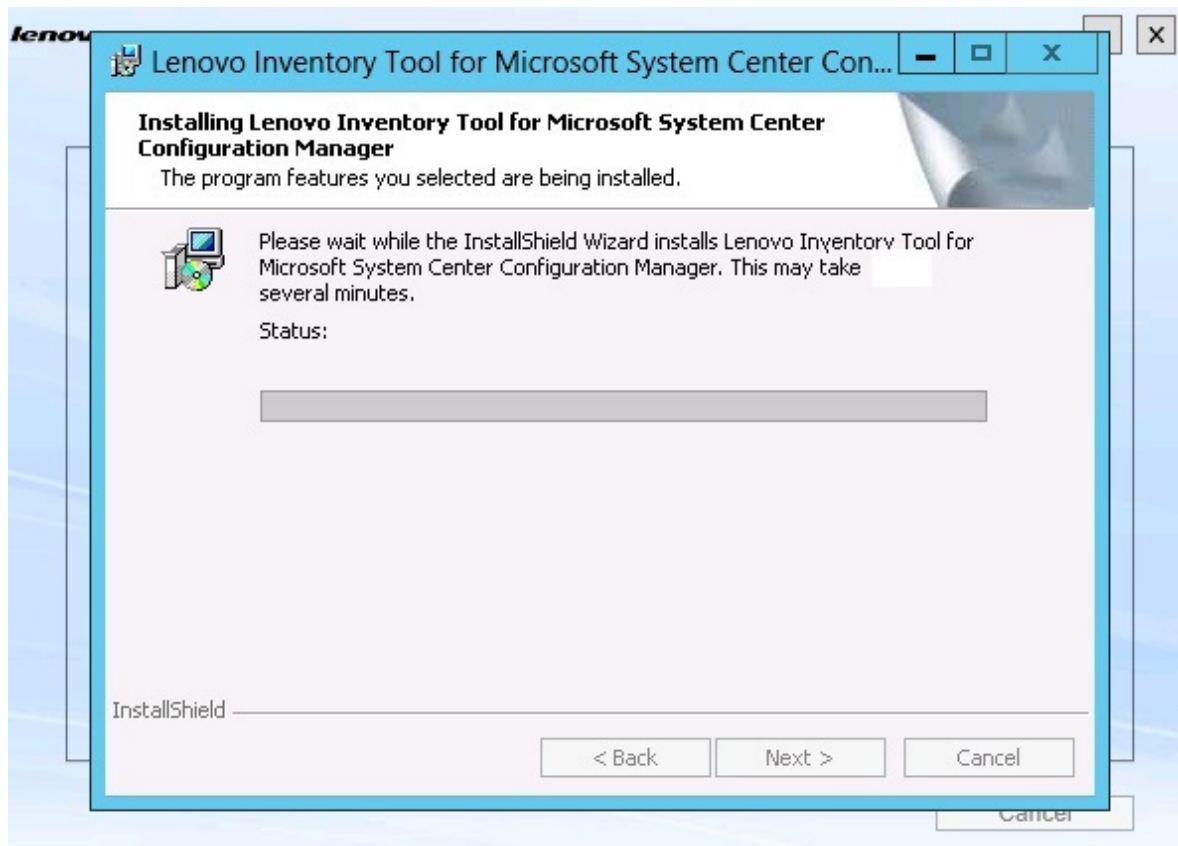


Figure 18. Installation wizard

The installation application for each component performs the repair work for that component. This is done component by component.

When the installation completes, the Results page opens and shows the status of the repair.

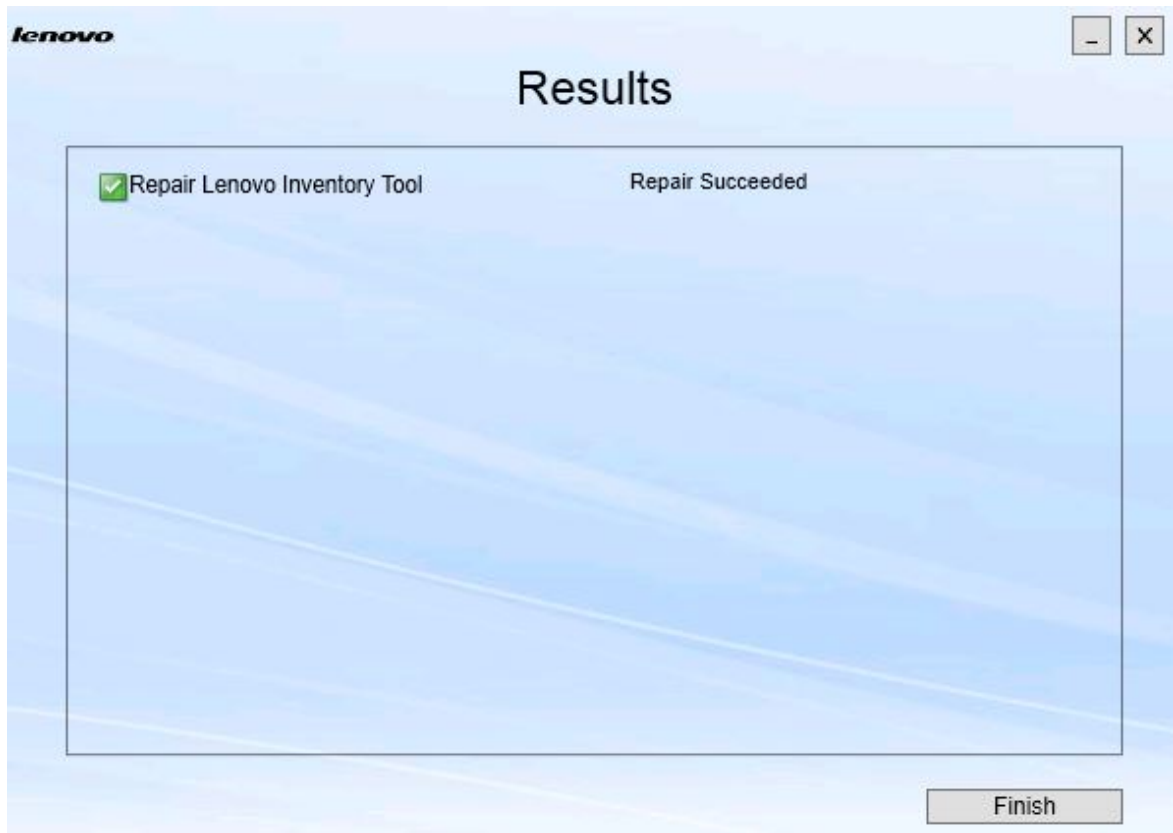


Figure 19. Repair results

Step 4. Click **Finish**.

## Chapter 5. Uninstalling components

To remove all installed components, use the **Uninstall** option. To remove a single component, use the **Change** option on the Maintenance page.

### Procedure

- Step 1. From the Maintenance page, click **Uninstall**.  
The Confirmation page opens.

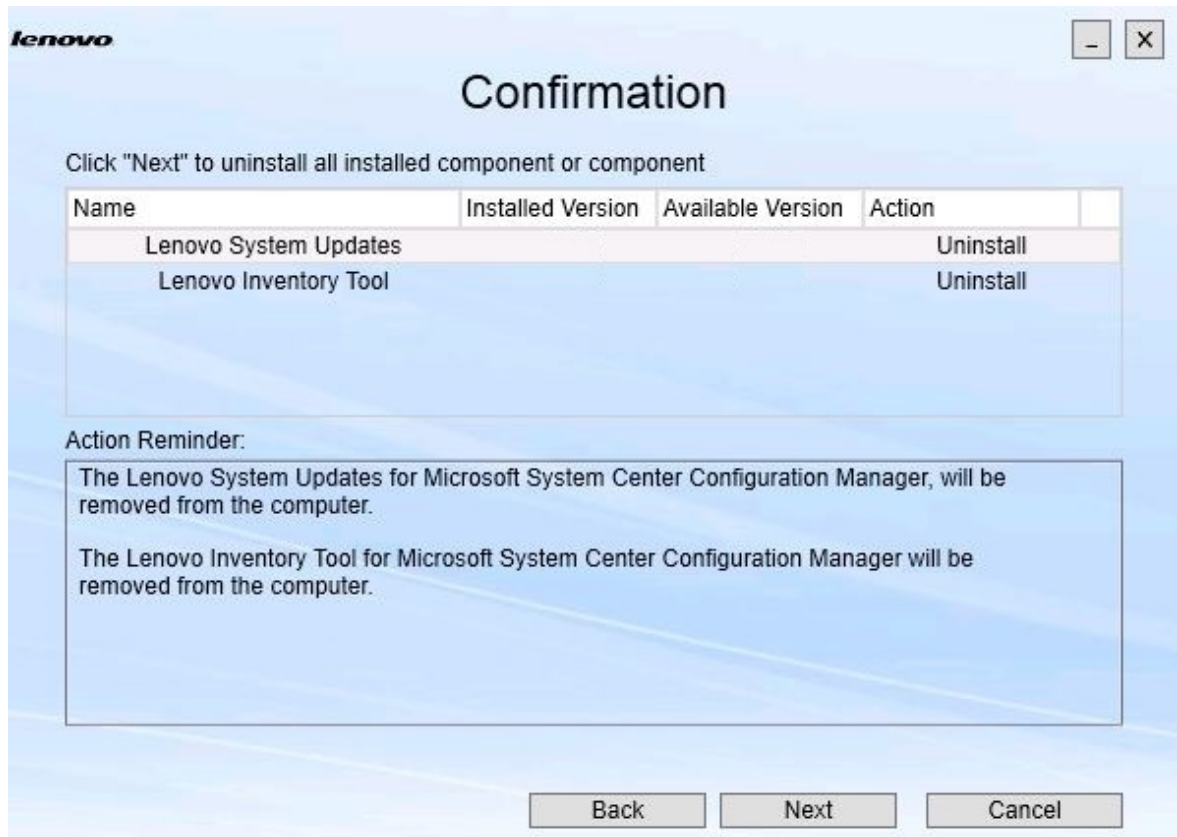


Figure 20. Confirmation page

The Confirmation page summarizes the actions to be taken and requires you to confirm that you want to continue with the uninstallation.

Step 2. To uninstall the components, click **Next**.

The components are uninstalled one by one. During the process, you must confirm the uninstallation action for each component before it is uninstalled, as shown in the following figure.

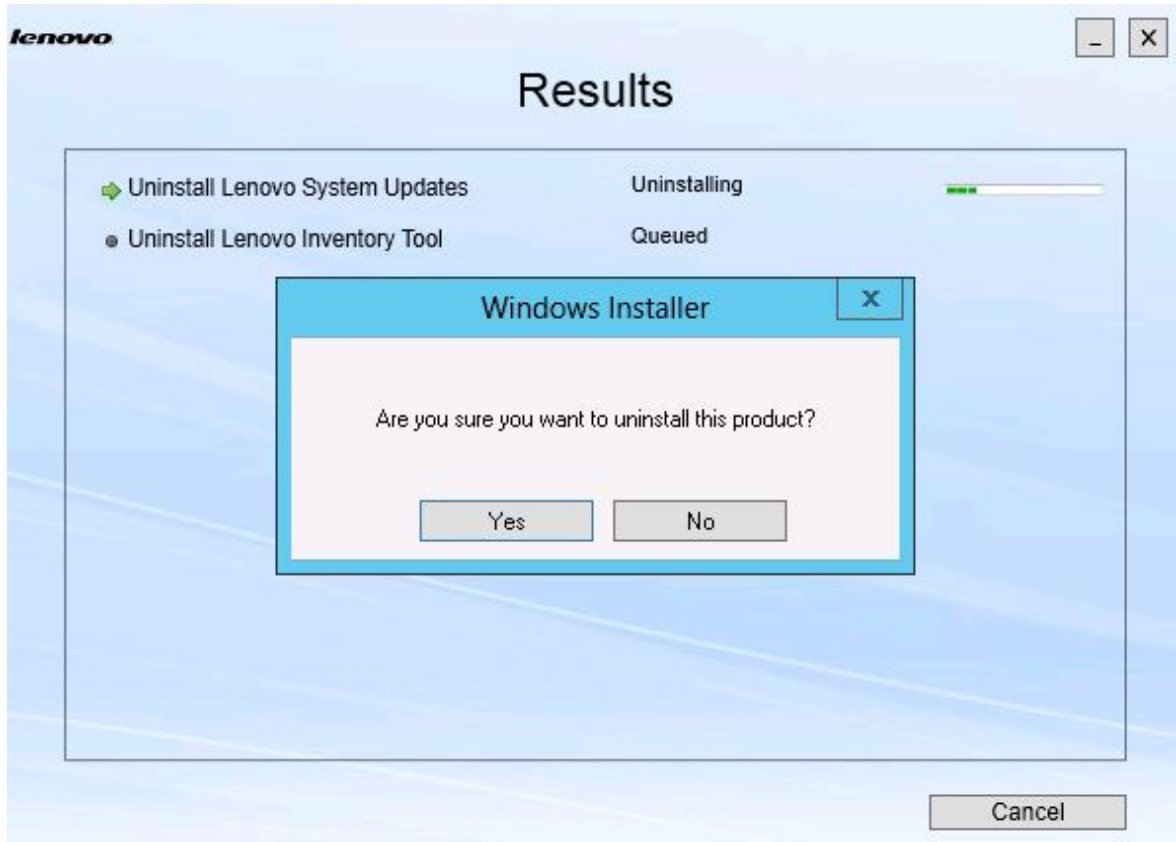


Figure 21. Message asking you to confirm the uninstallation

Step 3. Click **Yes** to complete the process.  
When the process completes, the Results page opens.

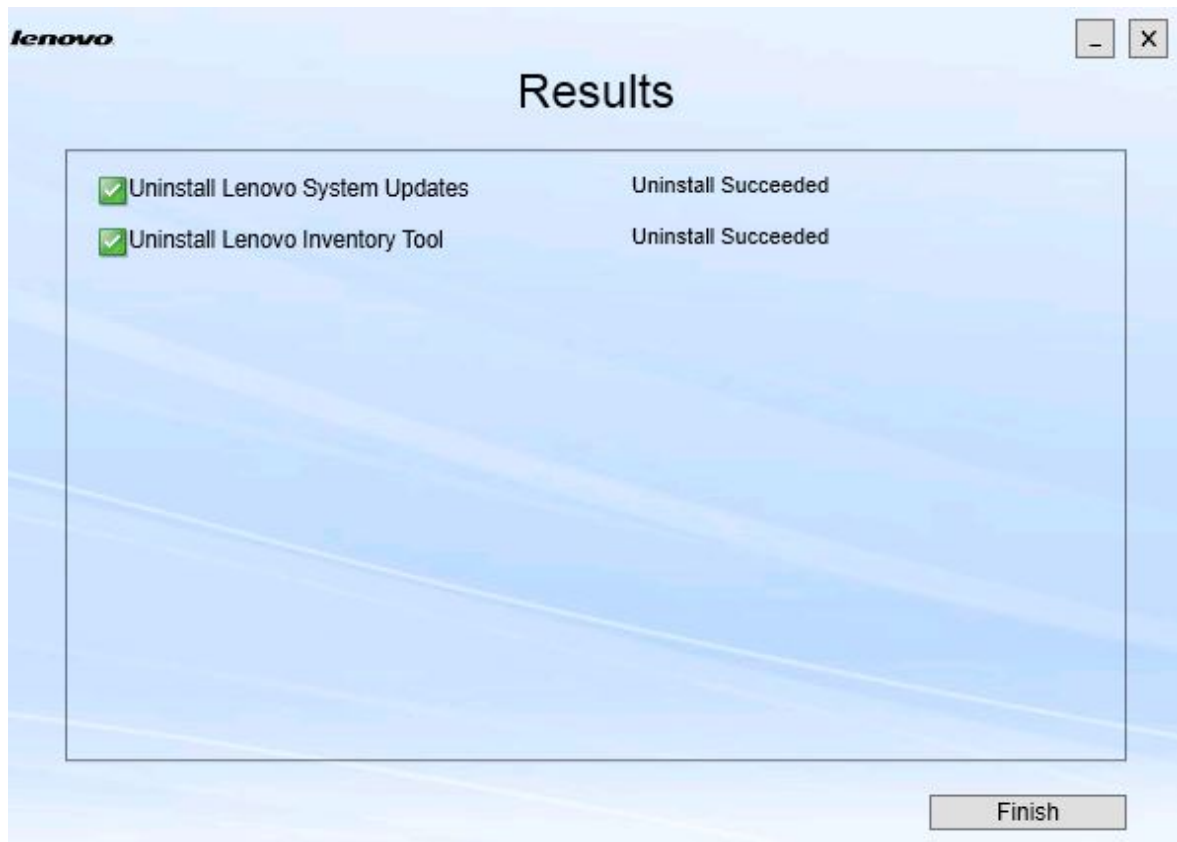


Figure 22. Results page

Step 4. Click **Finish**.





---

## Chapter 6. Troubleshooting

This topic describes situations you might encounter and provides tips for addressing them.

### **The installation wizard does not launch when .Net Framework v4.0 is not installed**

#### **Issue**

.Net Framework 4.0 or a later version is not installed on this computer.

#### **Possible solution**

Before attempting to start the installation wizard, install .Net Framework 4.0. You can download it from Microsoft .NET Framework 4 (Standalone Installer) website.

### **The installation wizard will neither install nor launch due to limited disk space**

#### **Issue**

An error message is displayed indicating that there is not enough disk space to install the components.

#### **Possible solution**

Clear space on your hard disk drive so that you have enough disk space to install the components.

### **The installation wizard will fail on Windows 2003 server if .Network Framework 4.0 or later is not installed**

#### **Issue**

The installation wizard either cannot be started or fails if .Network Framework 4.0 or later is not installed on Windows 2003 server. It is a known limitation.

#### **Possible solution**

Install .Net Framework 4.0 or a later version on the target server before running the installation wizard.

### **Lenovo Hardware PRO Pack can be uninstalled while leaving Lenovo Hardware Management Pack**

#### **Issue**

Lenovo Hardware PRO Pack functionality depends on Lenovo Hardware Management Pack being installed. If you uninstall the Lenovo Hardware PRO Pack using the Lenovo Integrator Installer installation wizard, it prompts you to uninstall Lenovo Hardware Management Pack as well.

If you uninstall Lenovo Hardware Management Pack from the Start menu or from the Control Panel, the Management Pack can be uninstalled while leaving the PRO Pack installed on the system. However, when you remove the Lenovo Hardware Management Pack from the SCOM console, you must uninstall the PRO Pack first. The PRO Pack cannot work without the Lenovo Hardware Management Pack being installed.

#### **Possible solution**

Uninstall the Lenovo Hardware PRO Pack before uninstalling the Lenovo Hardware Management Pack.

### **The Installation wizard installs components to a network mapped drive, but components cannot be started**

## Issue

Although components are installed to a network mapped drive, the components cannot be started normally. When the installation wizard installs components to a network mapped drive, only the component files are copied.

The information generated when a component is running is recorded on the local machine. So the component cannot be started from a remote server directly.

---

## Appendix A. Accessibility features

Accessibility features help users who have a disability, such as restricted mobility or limited vision, to use information technology products successfully.

Lenovo System Updates include the following accessibility features:

- It can be operated through only the keyboard
- All information is communicated independent of color
- System settings for font, size, and color are inherited
- It supports interfaces commonly used by screen readers and screen magnifiers

### Keyboard navigation

This product uses standard Microsoft™ Windows™ navigation keys.

**Lenovo and accessibility:** For information about the commitment that Lenovo has to accessibility, see the [Lenovo Accessibility website](#).

### Accessibility deviation

The following issues are known accessibility limitations.

JAWS cannot communicate whether the check box is selected or cleared in the installation wizard

If you select one item in the list view on the Install/Upgrade page or on the Add/Remove page in the installation wizard and then press the space bar to select or clear the item check box, JAWS (job access with speech) cannot determine whether the check box is selected or not. This issue is a known limitation.



---

## Appendix B. Notices

Lenovo may not offer the products, services, or features discussed in this document in all countries. Consult your local Lenovo representative for information on the products and services currently available in your area.

Any reference to a Lenovo product, program, or service is not intended to state or imply that only that Lenovo product, program, or service may be used. Any functionally equivalent product, program, or service that does not infringe any Lenovo intellectual property right may be used instead. However, it is the user's responsibility to evaluate and verify the operation of any other product, program, or service.

Lenovo may have patents or pending patent applications covering subject matter described in this document. The furnishing of this document does not give you any license to these patents. You can send license inquiries, in writing, to:

*Lenovo (United States), Inc.  
1009 Think Place - Building One  
Morrisville, NC 27560  
U.S.A.  
Attention: Lenovo Director of Licensing*

LENOVO PROVIDES THIS PUBLICATION "AS IS" WITHOUT WARRANTY OF ANY KIND, EITHER EXPRESS OR IMPLIED, INCLUDING, BUT NOT LIMITED TO, THE IMPLIED WARRANTIES OF NON-INFRINGEMENT, MERCHANTABILITY OR FITNESS FOR A PARTICULAR PURPOSE. Some jurisdictions do not allow disclaimer of express or implied warranties in certain transactions, therefore, this statement may not apply to you.

This information could include technical inaccuracies or typographical errors. Changes are periodically made to the information herein; these changes will be incorporated in new editions of the publication. Lenovo may make improvements and/or changes in the product(s) and/or the program(s) described in this publication at any time without notice.

The products described in this document are not intended for use in implantation or other life support applications where malfunction may result in injury or death to persons. The information contained in this document does not affect or change Lenovo product specifications or warranties. Nothing in this document shall operate as an express or implied license or indemnity under the intellectual property rights of Lenovo or third parties. All information contained in this document was obtained in specific environments and is presented as an illustration. The result obtained in other operating environments may vary.

Lenovo may use or distribute any of the information you supply in any way it believes appropriate without incurring any obligation to you.

Any references in this publication to non-Lenovo Web sites are provided for convenience only and do not in any manner serve as an endorsement of those Web sites. The materials at those Web sites are not part of the materials for this Lenovo product, and use of those Web sites is at your own risk.

Any performance data contained herein was determined in a controlled environment. Therefore, the result obtained in other operating environments may vary significantly. Some measurements may have been made on development-level systems and there is no guarantee that these measurements will be the same on generally available systems. Furthermore, some measurements may have been estimated through extrapolation. Actual results may vary. Users of this document should verify the applicable data for their specific environment.

---

## Trademarks

Lenovo, the Lenovo logo, Flex System, System x, and NeXtScale System are trademarks of Lenovo in the United States, other countries, or both.

Intel and Intel Xeon are trademarks of Intel Corporation in the United States, other countries, or both.

Internet Explorer, Microsoft, and Windows are trademarks of the Microsoft group of companies.

Linux is a registered trademark of Linus Torvalds.

Other company, product, or service names may be trademarks or service marks of others.

---

## Important notes

Processor speed indicates the internal clock speed of the microprocessor; other factors also affect application performance.

When referring to processor storage, real and virtual storage, or channel volume, KB stands for 1 024 bytes, MB stands for 1 048 576 bytes, and GB stands for 1 073 741 824 bytes.

When referring to hard disk drive capacity or communications volume, MB stands for 1 000 000 bytes, and GB stands for 1 000 000 000 bytes. Total user-accessible capacity can vary depending on operating environments.

Lenovo makes no representations or warranties with respect to non-Lenovo products. Support (if any) for the non-Lenovo products is provided by the third party, not Lenovo.

Some software might differ from its retail version (if available) and might not include user manuals or all program functionality.



