



Lenovo Inventory Tool for Microsoft System Center Configuration Manager Installation and User Guide



Version 6.3

Note

Before using this information and the product it supports, read the information in [Appendix D “Notices” on page 47](#).

Sixth Edition (September 2016)

© Copyright Lenovo 2014, 2016.

Portions © Copyright IBM Corporation 2012, 2014

LIMITED AND RESTRICTED RIGHTS NOTICE: If data or software is delivered pursuant to a General Services Administration “GSA” contract, use, reproduction, or disclosure is subject to restrictions set forth in Contract No. GS-35F-05925

Contents

Contents	i
Figuresiii
Tables	v
About this publication	vii
Conventions and terminologyvii
Web resourcesvii
Chapter 1. Lenovo Inventory Tool for Microsoft System Center Configuration Manager	1
Chapter 2. Planning and installing Lenovo Inventory Tool	3
Hardware and software requirements	3
Hardware requirements	3
Supported operating systems	3
Required software	3
Supported systems and software	3
Supported Microsoft System Center products	3
Supported client systems	3
Supported operating systems	6
Required software on client machines	6
Installing Lenovo Inventory Tool	6
Uninstalling Lenovo Inventory Tool	15

Chapter 3. Working with Lenovo Inventory Tool and System Center Configuration Manager 2007	17
Deploy the Lenovo Inventory Tool client package from the Microsoft System Center Configuration Manager server to the Microsoft System Center Configuration Manager client	17
Viewing hardware inventory of clients from the Microsoft System Center Configuration Manager server.	28
Chapter 4. Working with Lenovo Inventory Tool and Microsoft System Center Configuration 2012.	31
Deploying the Lenovo Inventory Tool client package from the Microsoft System Center Configuration Manager server to Microsoft System Center Configuration Manager client.	31
Viewing hardware inventory of clients from the Microsoft System Center Configuration Manager server.	38
Appendix A. Troubleshooting	41
Appendix B. Accessibility features	43
Appendix C. System firewall settings.	45
Appendix D. Notices.	47
Trademarks	48
Important notes.	48

Figures

1.	Preparing to Install Lenovo Inventory Tool	7	17.	Advertisement Target page	23
2.	SCCM 2007 or later not installed message	7	18.	Advertisement Name page	24
3.	InstallShield Wizard Welcome page for Lenovo Inventory Tool	8	19.	Advertisement Subcollection page	25
4.	Software License agreement	9	20.	Advertisement Schedule page	26
5.	Destination folder	10	21.	Assign Program page	27
6.	Lenovo Inventory Tool Run Cycle.	11	22.	Wizard Completed page	28
7.	Example of invalid value for Week	12	23.	Select client	28
8.	Ready to install the program page	13	24.	Start Resource Explorer wizard	29
9.	Installation progress being depicted	14	25.	Look for hardware inventory.	29
10.	InstallShield Wizard Completed	15	26.	Lenovo Inventory ToolClient package	31
11.	Lenovo Inventory Tool Client package	17	27.	Deploy Lenovo Inventory Tool package	31
12.	Distribute Lenovo Inventory Tool Client package	18	28.	General page	32
13.	Distribute Package Wizard welcome page	19	29.	Content page	33
14.	Distribution Points page	20	30.	Deployment Settings page	34
15.	Advertise Program page	21	31.	Scheduling page	35
16.	Select Program page	22	32.	User Experience page	36
			33.	Summary page	37
			34.	Completion page	38
			35.	Select client	39
			36.	Start Resource Explorer	39
			37.	View hardware inventory	40



Tables

- 1. Frequently used terms and acronymsvii
- 2. Supported Lenovo systems 4
- 3. Supported IBM systems 4
- 4. Ports used by Lenovo Inventory Tool for Microsoft System Center Configuration Manager 45

About this publication

This Users Guide provides the latest information for Lenovo Inventory Tool for Microsoft System Center Configuration Manager 2007. Lenovo Inventory Tool is used to view Lenovo hardware inventory of the SCCM client.

Conventions and terminology

Paragraphs that start with a bold **Note**, **Important**, or **Attention** are notices with specific meanings that highlight key information.

Note: These notices provide important tips, guidance, or advice.

Important: These notices provide information or advice that might help you avoid inconvenient or difficult situations.

Attention: These notices indicate possible damage to programs, devices, or data. An attention notice appears before the instruction or situation in which damage can occur.

Table 1. Frequently used terms and acronyms

Term or acronym	Definition
DSA	Lenovo Dynamic System Analysis
MSCCM	Microsoft System Center Configuration Manager
SCCM	System Center Configuration Manager
SEP	Lenovo System Enablement Pack
SSL	Secure Sockets Layer
UXSP	UpdateXpress System Pack Installer
UXSPI	UpdateXpress System Pack
WSUS	Windows Server Update Services

Web resources

The following web pages provide resources for understanding, using, and troubleshooting System x , Lenovo BladeCenter servers, and systems management tools.

System Management with Lenovo XClarity Solutions

This website provides an overview of the Lenovo XClarity solutions that integrate System x and Flex System hardware to provide system management capability:

- [System Management with Lenovo XClarity Solution website](#)

Lenovo technical support portal

This website can assist you in locating support for hardware and software:

- [Lenovo Support Portal website](#)

Microsoft System Center Configuration Manager page

- [Microsoft System Center Configuration Manager 2007 website](#)

Chapter 1. Lenovo Inventory Tool for Microsoft System Center Configuration Manager

Through its alliance with Microsoft System Center products Microsoft System Center Configuration Manager 2007 (SCCM), Lenovo Inventory Tool for Microsoft System Center Configuration Manager reduces the time and effort it takes to view the hardware inventory of clients from the server.

Lenovo Inventory Tool for Microsoft System Center Configuration Manager is free of charge.

Lenovo Inventory Tool for Microsoft System Center Configuration Manager provides the ability to view an Lenovo hardware inventory of the SCCM client from the SCCM server.

Chapter 2. Planning and installing Lenovo Inventory Tool

Use this procedure to plan for and install Lenovo Inventory Tool.

Hardware and software requirements

The topics in the section describe the hardware and software requirements for Lenovo Inventory Tool.

Hardware requirements

Lenovo Inventory Tool can be run on a non-Lenovo server or Lenovo server that supports the Windows operating system and SCCM.

Supported operating systems

Lenovo Inventory Tool tool supports the following Windows operating systems:

- Windows Server 2003 SP2/R2
- Windows Server 2003 SP2/R2 x64
- Windows Server 2008 SP1/SP2
- Windows Server 2008 SP1/SP2 x64
- Windows Server 2008 SP1/R2
- Windows Server 2012
- Windows Server 2012 R2

Required software

Microsoft System Center Configuration Manager 2007 or 2012 is required.

Supported systems and software

This section describes the hardware and software that is supported by Lenovo Inventory Tool for Microsoft System Center Configuration Manager.

Supported Microsoft System Center products

Lenovo Inventory Tool for Microsoft System Center Configuration Manager supports the following Microsoft System Center products:

- Microsoft System Center Configuration Manager 2007 R2/R3
- Microsoft System Center Configuration Manager 2007 SP2
- Microsoft System Center Configuration Manager 2012
- Microsoft System Center Configuration Manager 2012 SP1
- Microsoft System Center Configuration Manager 2012 R2

Supported client systems

The supported client systems for Lenovo Inventory Tool are listed in the following table.

Supported systems

Table 2. Supported Lenovo systems

Product family name	Machine type
Lenovo BladeCenter HS20	1883, 8843
Lenovo BladeCenter HS21	1885, 8853
Lenovo BladeCenter HS22	7870, 1936, 1911
Lenovo BladeCenter HS22V	1949, 7871
Lenovo BladeCenter HS23	7875, 1929
Lenovo BladeCenter HS23E	8038, 8039
Lenovo BladeCenter HX5	1909, 1910, 7872, 7873
Lenovo BladeCenter LS21	7971
Lenovo BladeCenter LS22	7901
Lenovo BladeCenter LS42	7902
Lenovo Flex System x240 Compute Node	7162, 2588
Lenovo Flex System x240 M5 Compute Node	2591, 9532
Lenovo Flex System x440 Compute Node	7167, 2590
Lenovo NeXtScale nx360 M5	5465
Lenovo NeXtScale nx360 M5 DWC	5467, 5468, 5469
Lenovo System x3550 M4	7914
Lenovo ThinkServer SD350	5493
Lenovo System x3550 M5	5463
Lenovo System x3630 M4	7158,
Lenovo System x3650 M4	7915
Lenovo System x3650 M5	5462
Lenovo System x3850 X6 / x3950 X6	6241

Table 3. Supported IBM systems

Product family name	Machine type
IBM Flex System x220 Compute Node	7906, 2585
IBM Flex System x222 Compute Node	7916
IBM Flex System x240 Compute Node	8737, 8738, 7863
IBM Flex System x280 Compute Node X6/x480 X6/x880 X6	7903
IBM Flex System x440 Compute Node	7917
IBM NeXtScale nx360 M4	5455
IBM Smart Analytics	7949
IBM System x3100 M4	2582
IBM System x3100 M5	5457

Table 3. Supported IBM systems (continued)

Product family name	Machine type
IBM System x3200 M2	4367, 4368
IBM System x3200 M3	7327, 7328
IBM System x3250 M2	7657
IBM System x3250 M3	4251, 4252, 4261
IBM System x3250 M4	2583
IBM System x3250 M5	5458
IBM System x3300 M4	7382
IBM System x3400 M2	7836, 7837
IBM System x3400 M3	7378, 7379
IBM System x3500	7977
IBM System x3500 M2	7839
IBM System x3500 M3	7380
IBM System x3500 M4	7383
IBM System x3530 M4	7160
IBM System x3550	7978, 1913
IBM System x3550 M2	4198, 7946
IBM System x3550 M3	4254, 7944
IBM System x3550 M4	7914
IBM System x3620 M3	7376
IBM System x3630 M3	7377
IBM System x3630 M4	7158
IBM System x3650	7979, 1914
IBM System x3650 M2	7947, 4199
IBM System x3650 M3	4255, 5454, 7945
IBM System x3650 M4	5466, 7915
IBM System x3650 M4 HD	5460
IBM System x3690 X5	7147, 7148, 7149, 7192
IBM System x3750 M4	8752
IBM System x3755	7163
IBM System x3755 M3	7164
IBM System x3850	8864, 7365, 7362
IBM System x3850 M2	7141, 7144, 7233, 7234
IBM System x3850 X5/x3950 X5	7145, 7146, 7191, 7143

Table 3. Supported IBM systems (continued)

Product family name	Machine type
IBM System x3850 X6/x3950 X6	3837
IBM System x3950 M2	7141, 7144, 7233, 7234
IBM System x3950 M2 Dual node	7141, 7233, 7234
IBM System x3950 M2 3-4 node	7141, 7233, 7234
IBM System x3950 X5	7145, 7146
IBM System x iDataPlex® dx360 M4	7912, 7913

Supported operating systems

Several Windows operating systems are supported on client machines.

The following operating systems are supported on client machines:

- Windows Server 2003 SP2/R2
- Windows Server 2003 SP2/R2 x64
- Windows Server 2008 SP1/SP2
- Windows Server 2008 SP1/SP2 x64
- Windows Server 2008 SP1/R2 SP1
- Windows Server 2012
- Windows Server 2012 R2

Required software on client machines

Microsoft .NET Framework Version 2.0 is required on client machines.

Installing Lenovo Inventory Tool

This topic describes how to install Lenovo Inventory Tool.

There are two methods for installing Lenovo Inventory Tool for Microsoft System Center Configuration Manager. The first method uses the Lenovo Inventory Tool for Microsoft System Center Configuration Manager setup package (.exe file). The second method uses the Lenovo XClarity Integrator Installer for Microsoft System Center. For more information about the Lenovo XClarity Integrator Installer for Microsoft System Center refer to [Lenovo XClarity Integrator Installer for Microsoft System Center](#).

- Step 1. Go to [Lenovo Inventory Tool for Microsoft System Center Configuration Manager - Lenovo x86 servers](#).
- Step 2. Click **Microsoft System Center Configuration Manager (SCCM), Inventory Tool** to download the latest version of Lenovo Inventory tool.
The Preparing to Install page for Lenovo Inventory Tool opens.
- Step 3. Click **Next**.
The InstallShield Wizard page opens. If for some reason you need to stop the installation, click **Cancel**.

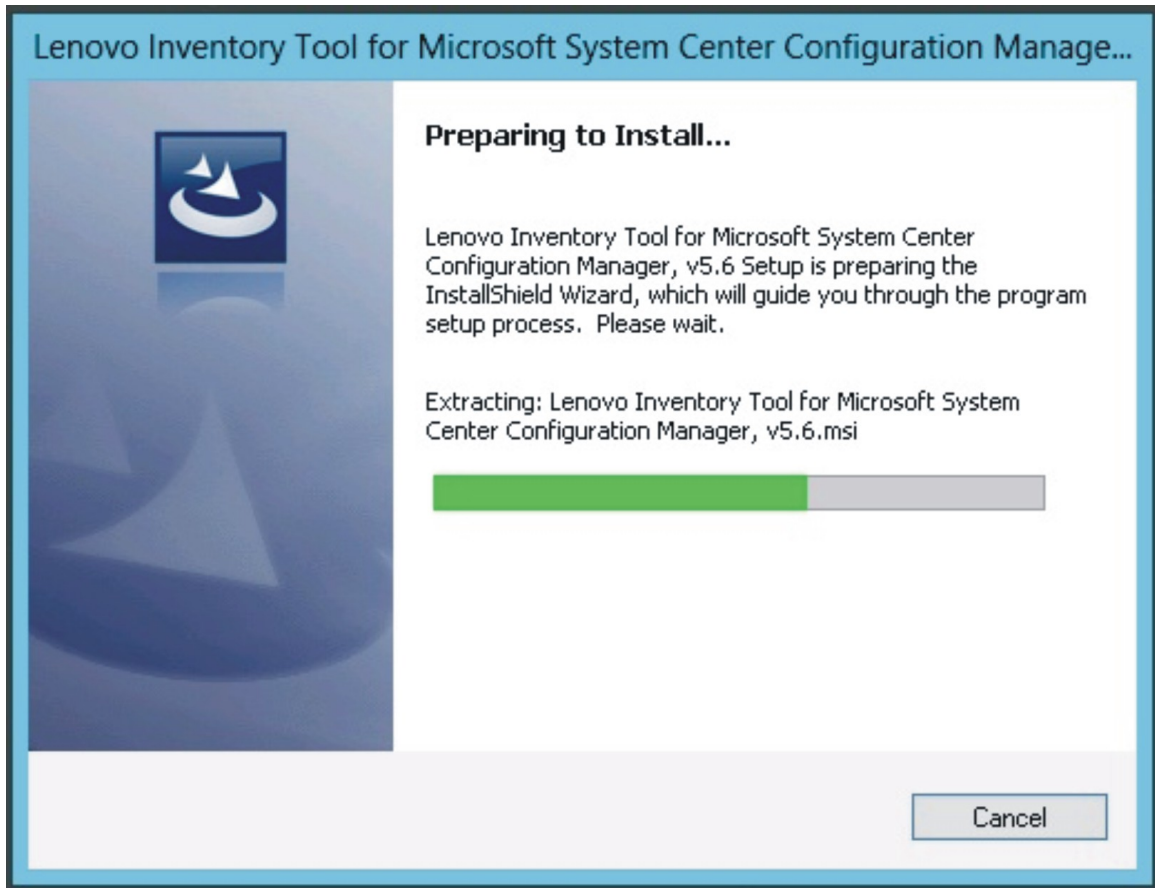


Figure 1. Preparing to Install Lenovo Inventory Tool

Note: If Microsoft System Center Configuration Manager 2007 or later is not installed on your system, the following message is displayed. Click **OK** to stop the program and complete the installation.

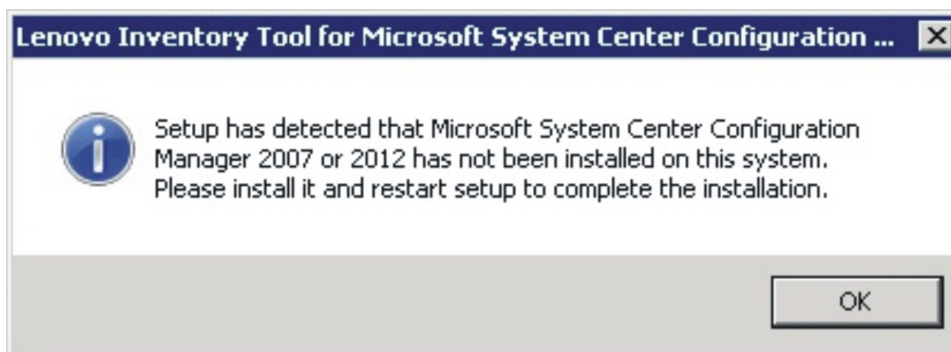


Figure 2. SCCM 2007 or later not installed message

Step 4. While the program installs, click **Next** to proceed to the License Agreement page.

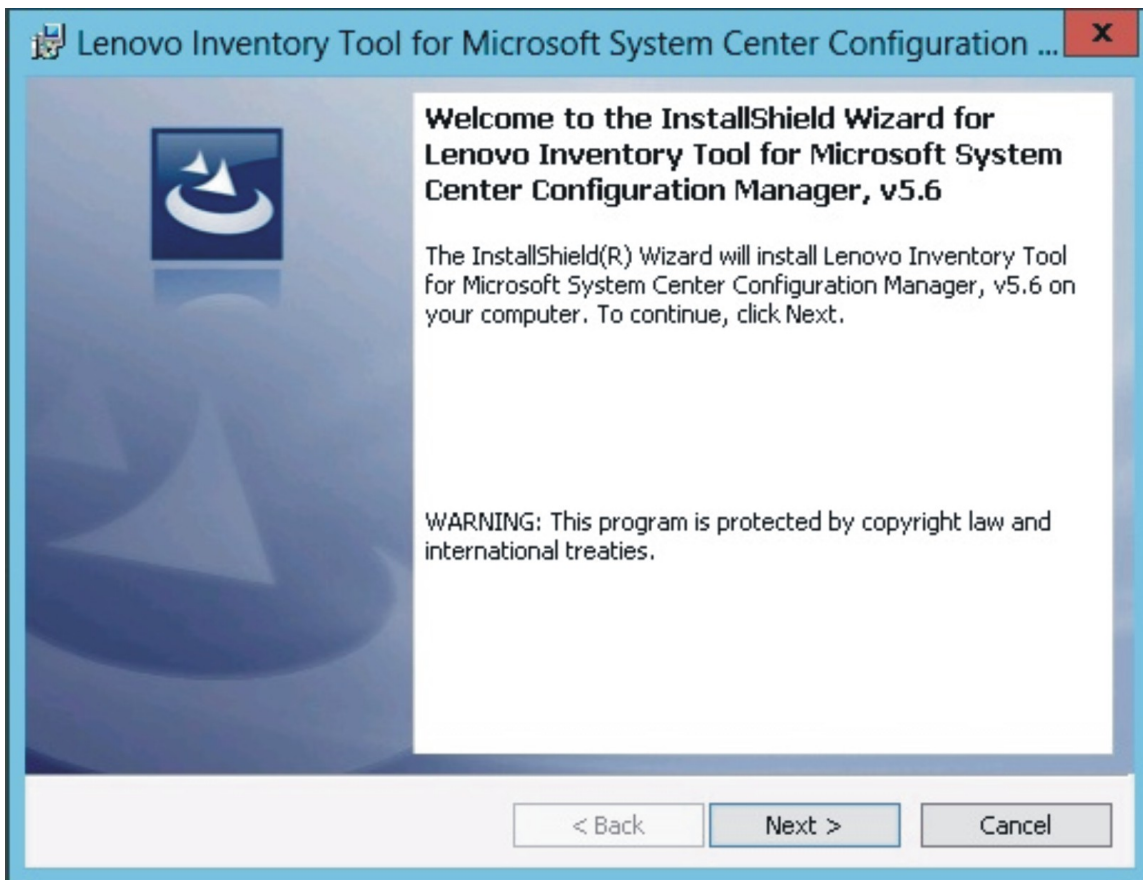


Figure 3. InstallShield Wizard Welcome page for Lenovo Inventory Tool

- Step 5. Read the license agreement terms, and then select **I accept the terms in the license agreement**. Click **Next**.

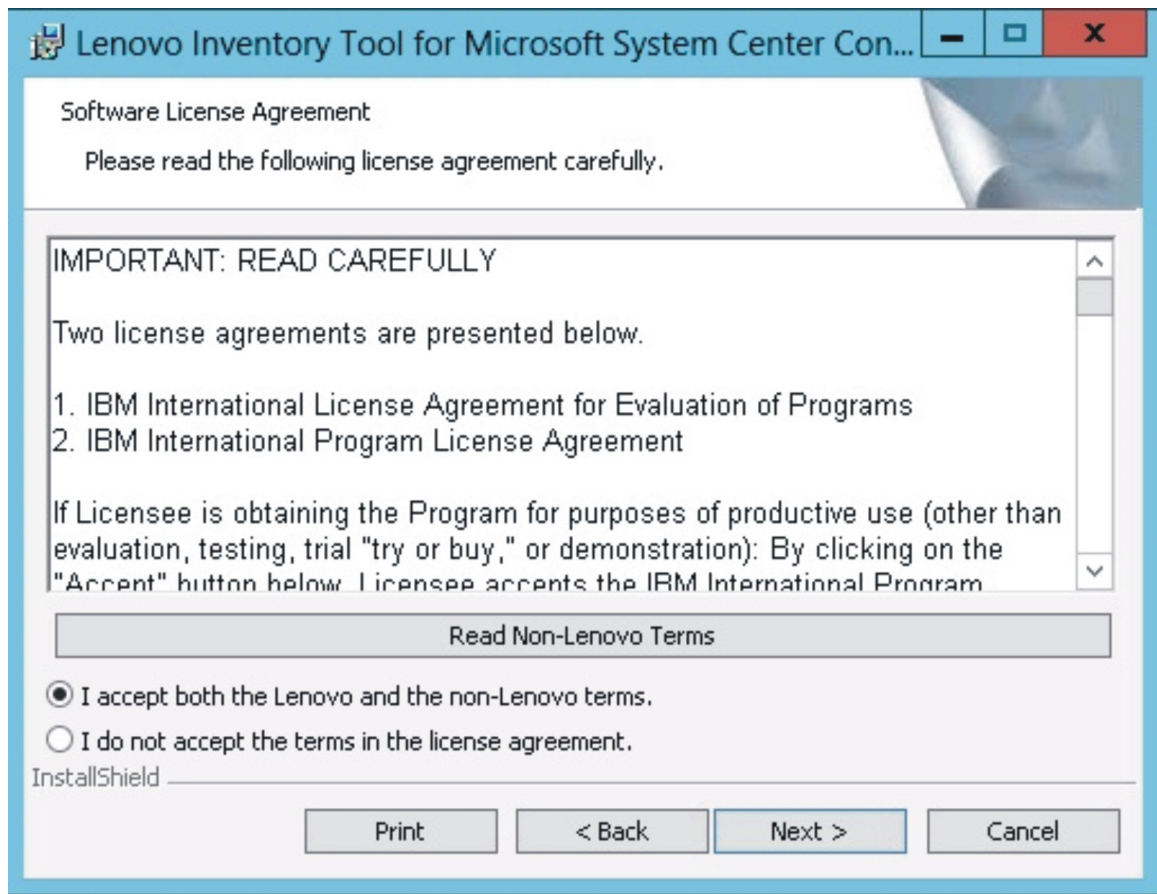


Figure 4. Software License agreement

- Step 6. On the Destination Folder page, either click **Next** to accept the default installation directory, or click **Change** and enter a new location.

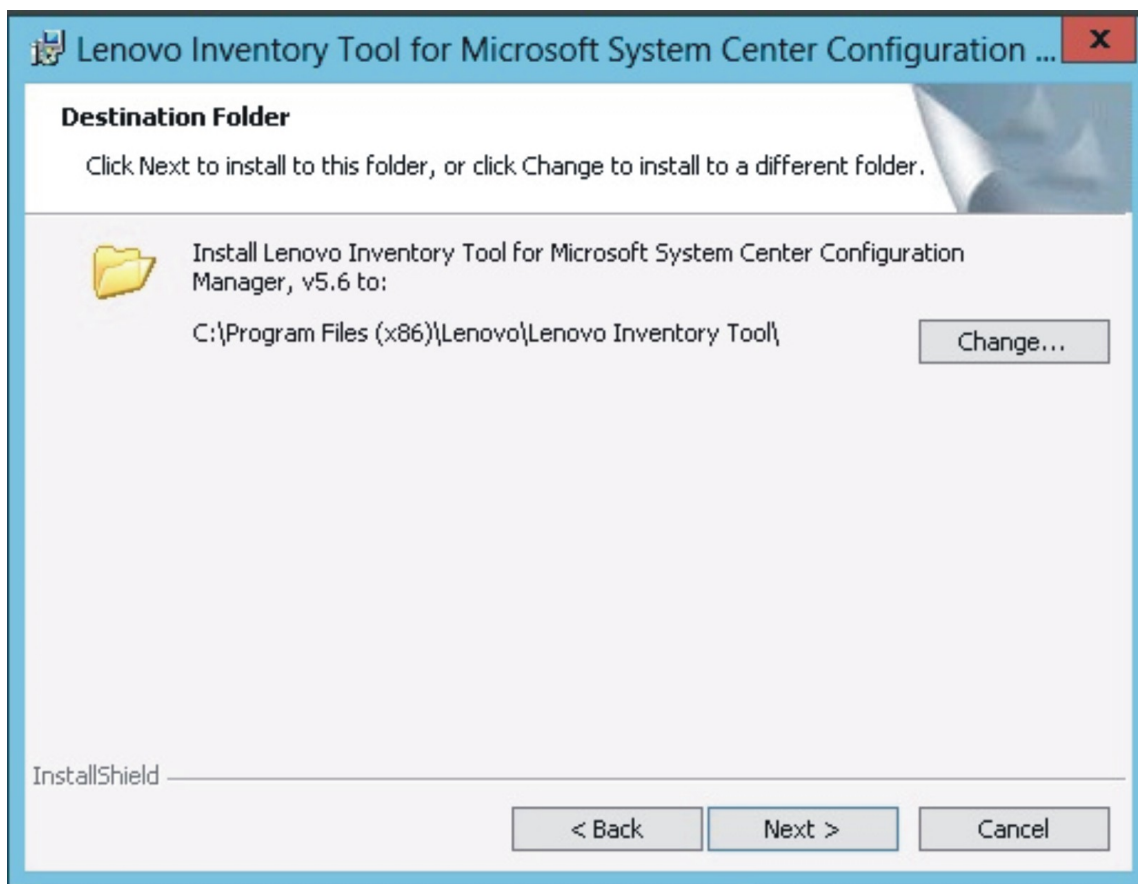


Figure 5. Destination folder

- Step 7. On the Lenovo Inventory Tool Client Run Cycle page, either click **Next** to use the default run cycle value, or enter a different run cycle value.

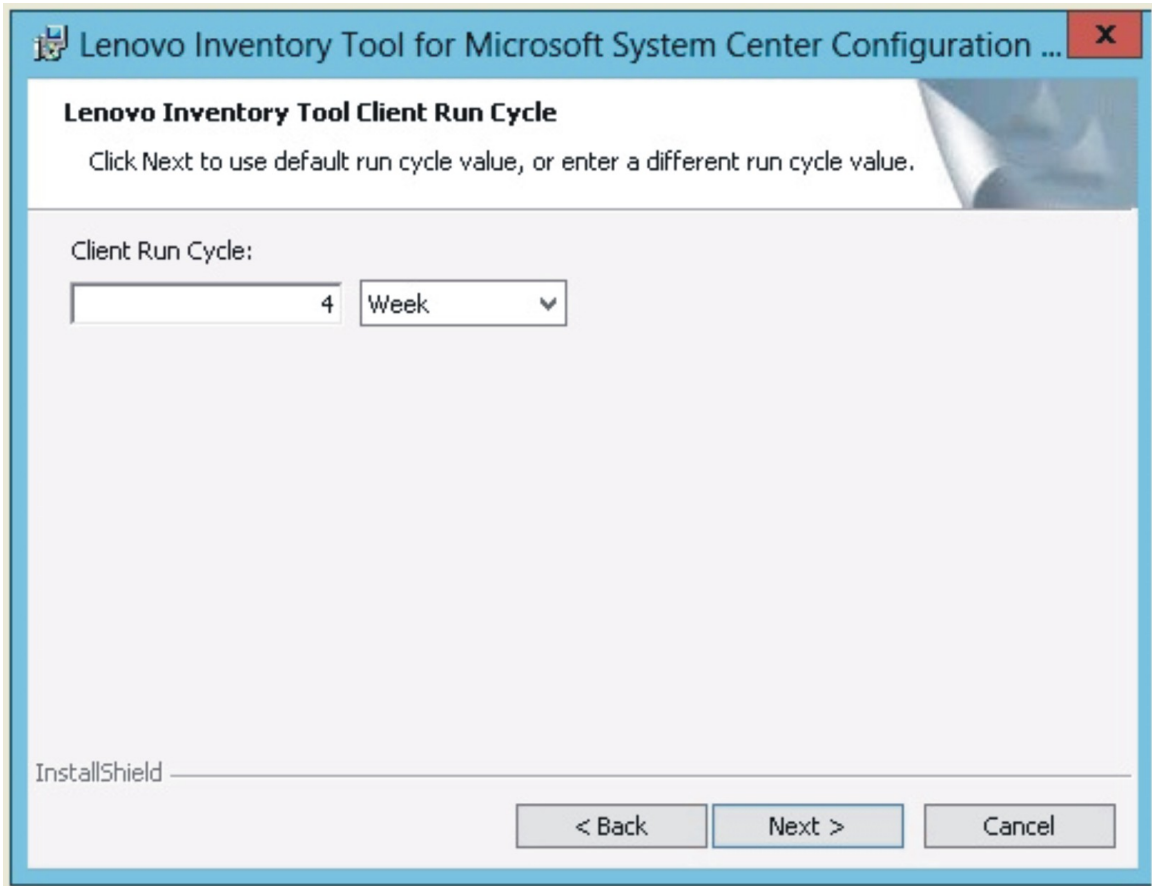


Figure 6. Lenovo Inventory Tool *Run Cycle*

Note: The value ranges for the client run cycle are 1 through 65 for **Day** and 1 through 52 for **Week**. If you enter a value that is not valid, the installation will not continue.

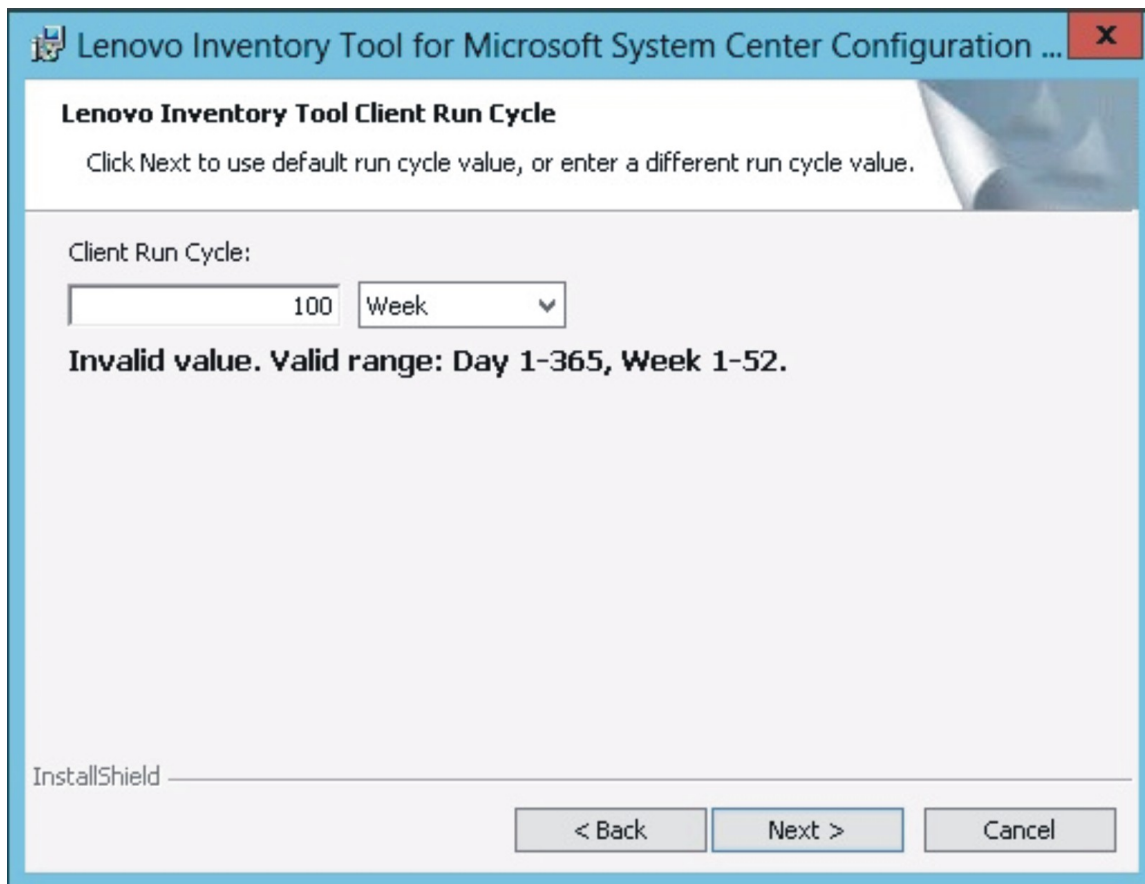


Figure 7. Example of invalid value for Week

- Step 8. On the Ready to Install the Program page, click **Install** to begin the installation. If you want to review or change any of your installation settings, either click **Back** to change them, or click **Cancel** to exit the wizard.

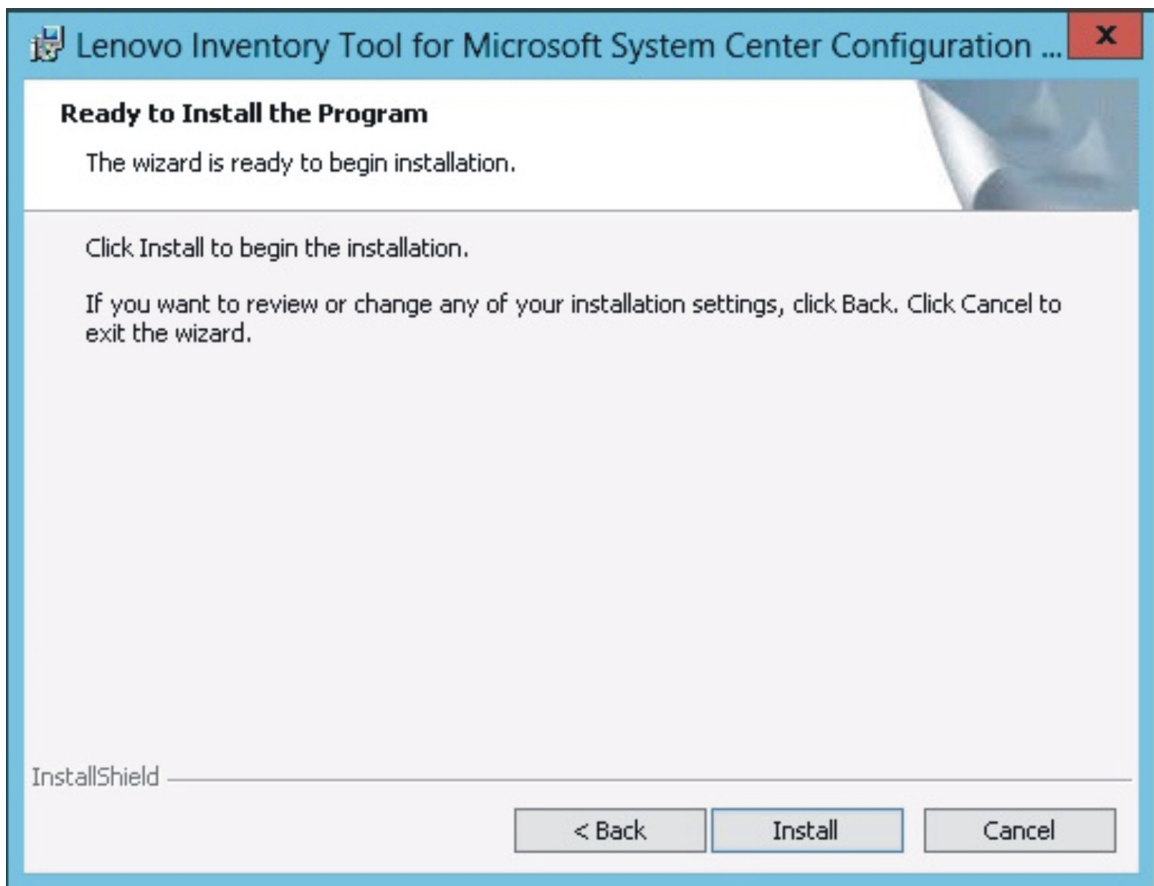


Figure 8. Ready to install the program page

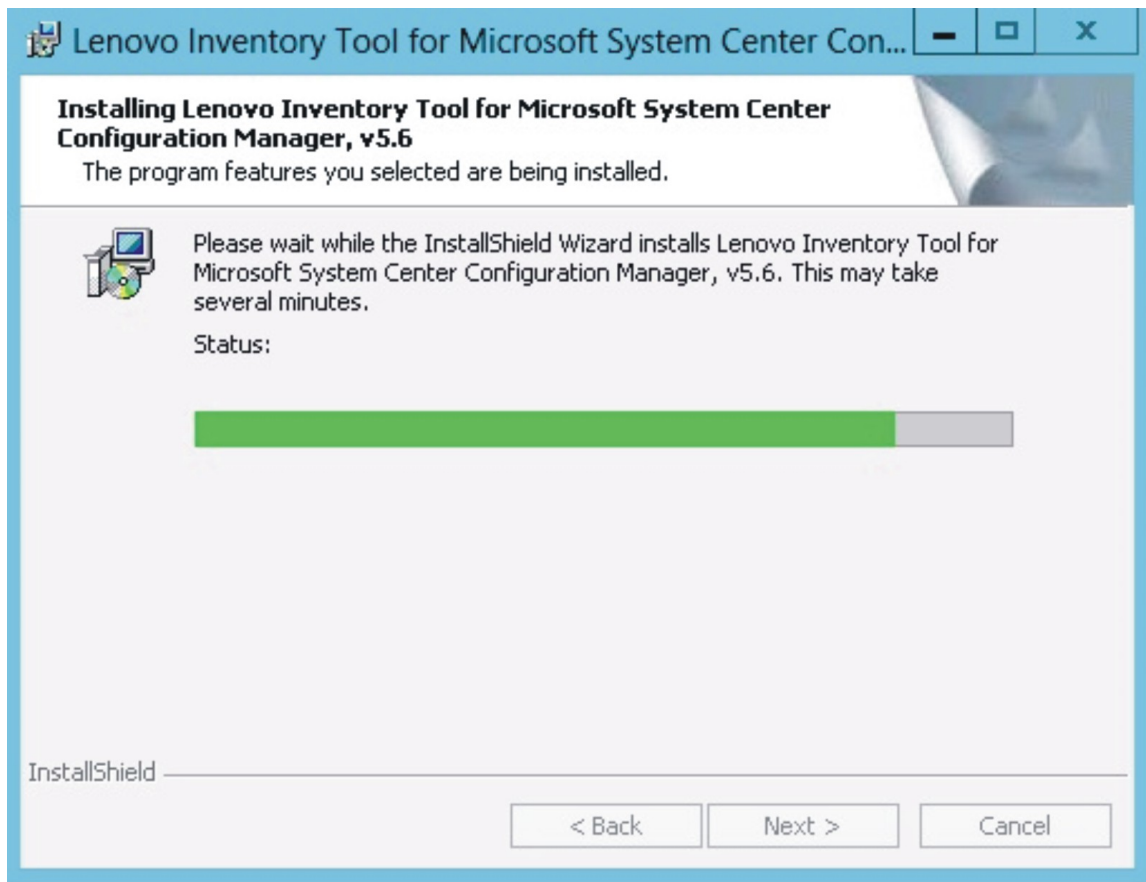


Figure 9. Installation progress being depicted

- Step 9. When the installation is complete, the InstallShield Wizard Completed page opens. Click **Finish** to exit the wizard.

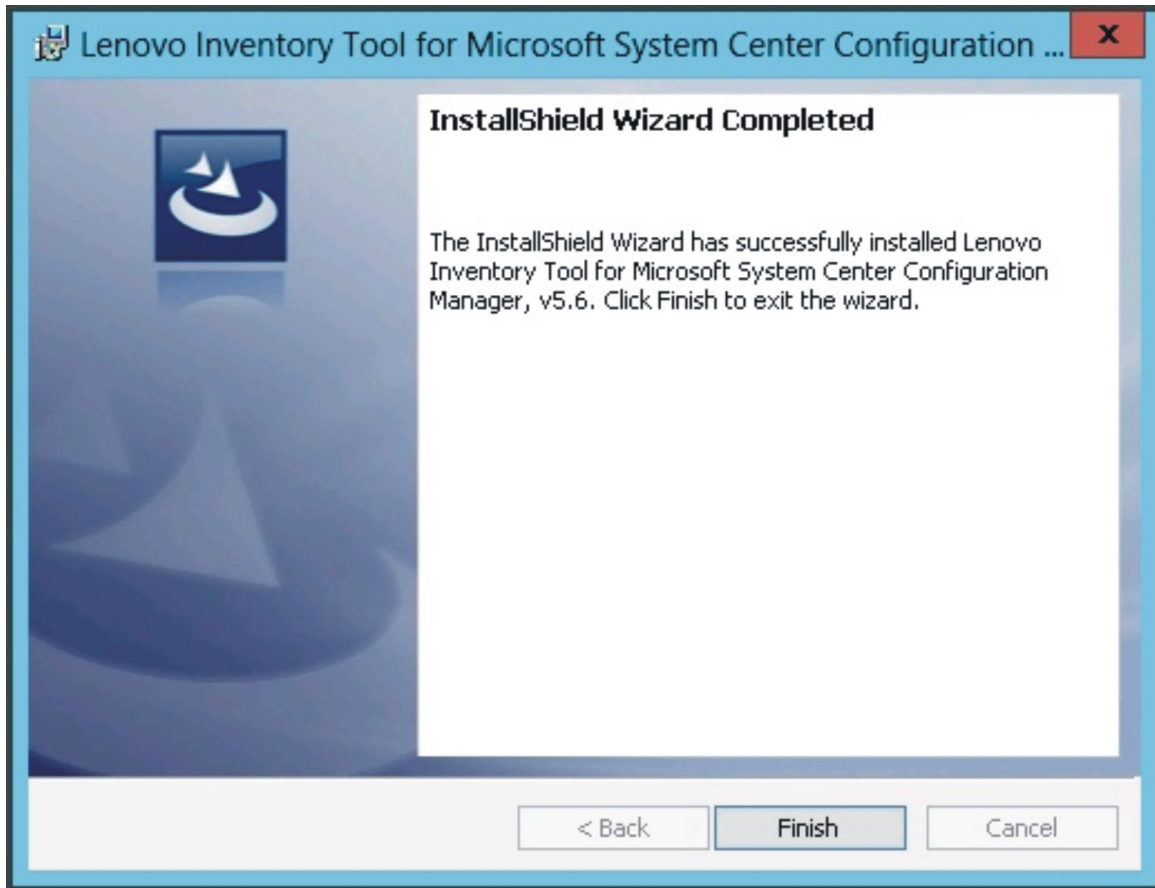


Figure 10. InstallShield Wizard Completed

Uninstalling Lenovo Inventory Tool

There are four methods for uninstalling Lenovo Inventory Tool for Microsoft System Center Configuration Manager.

To uninstall Lenovo Inventory Tool use one of the following methods.

- Uninstall by using **Add or Remove Programs**. For the Windows Server 2008 operating system, you can use **Programs and features** to uninstall.
- Select the **Remove** option for Lenovo Inventory Tool for Microsoft System Center Configuration Manager Installer (.exe file).
- Select the **Remove** option using Lenovo Integrated Installer (.exe file).
- Select **Uninstall** from the **Start** menu.

Chapter 3. Working with Lenovo Inventory Tool and System Center Configuration Manager 2007

The topics in this section describe how Lenovo Inventory Tool and Microsoft System Center Configuration Manager 2007 work together.

Deploy the Lenovo Inventory Tool client package from the Microsoft System Center Configuration Manager server to the Microsoft System Center Configuration Manager client

This topic describes how to deploy an Lenovo Inventory Tool Client package from the SCCM server to the SCCM client.

The Lenovo Inventory Tool Client package contains the file Lenovo Inventory Tool Client Setup.msi, which is used to install Lenovo Inventory Tool Client to the target machine.

Step 1. Open the SCCM console.

Step 2. Expand **Software Distribution** → **Packages** → **Lenovo Inventory Tool Client** and then right-click **Lenovo Inventory Tool Client**.

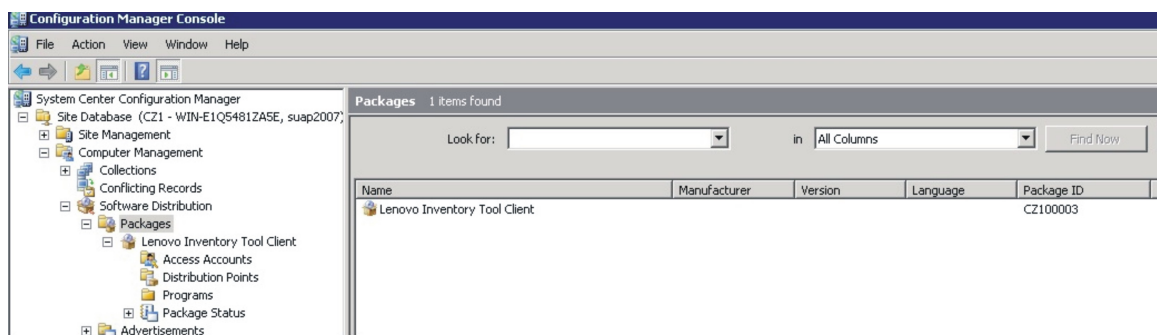


Figure 11. Lenovo Inventory Tool Client package

Step 3. Click **Distribute**, then select **Software**.

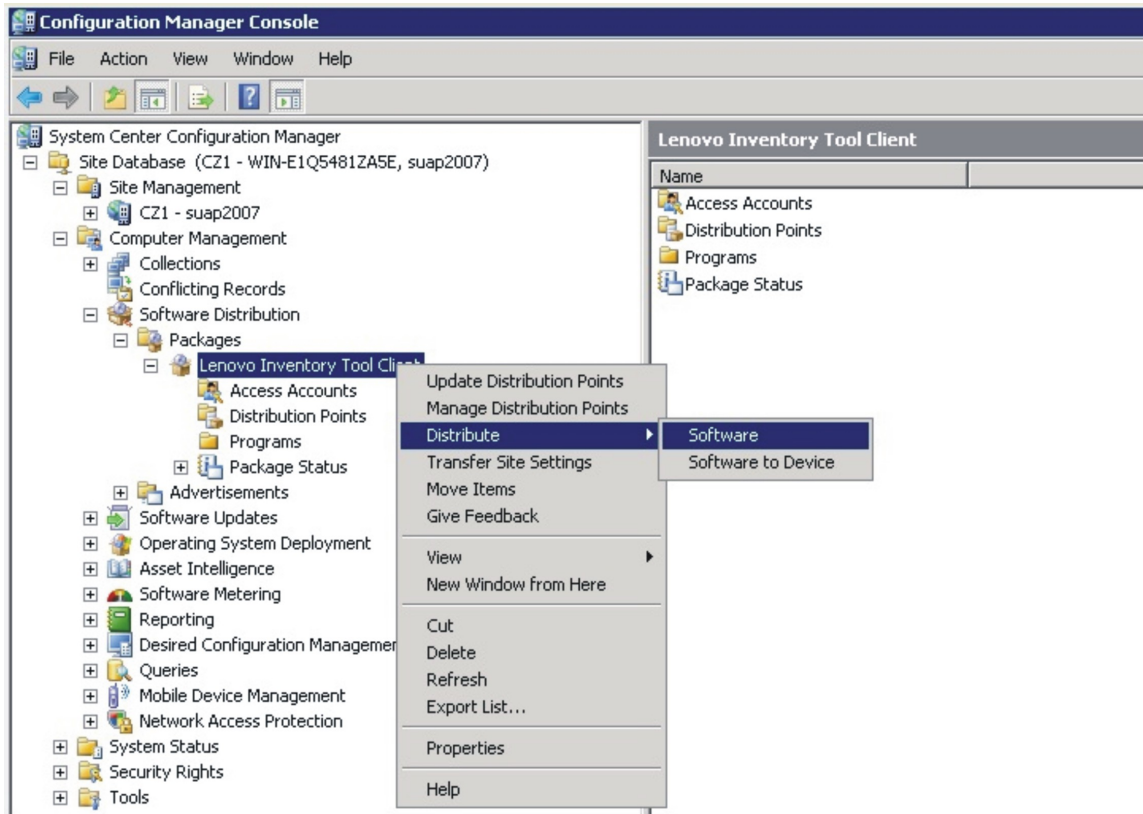


Figure 12. Distribute Lenovo Inventory Tool Client package

Step 4. On the Welcome page, click **Next** to distribute the software from the package.

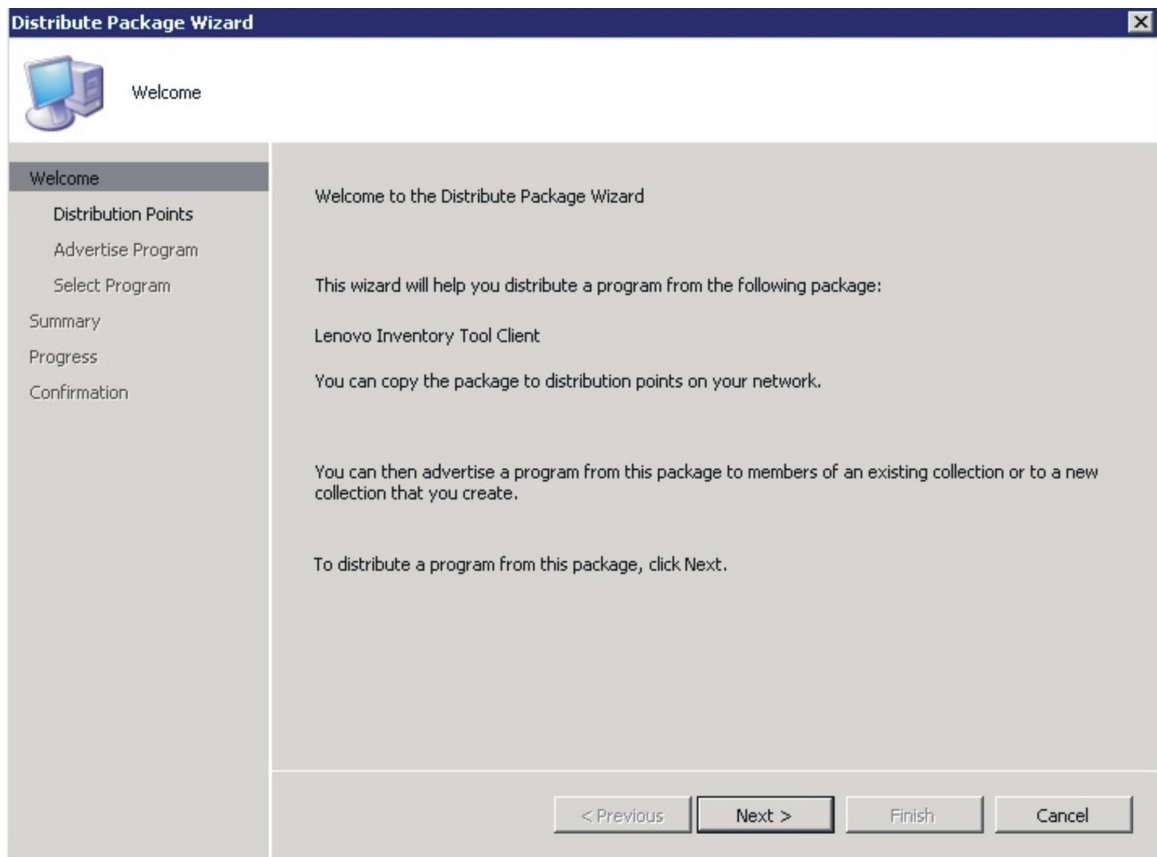


Figure 13. Distribute Package Wizard welcome page

- Step 5. On the Distribution Points page, select the distribution points where the client accesses this package, and then click **Next**.

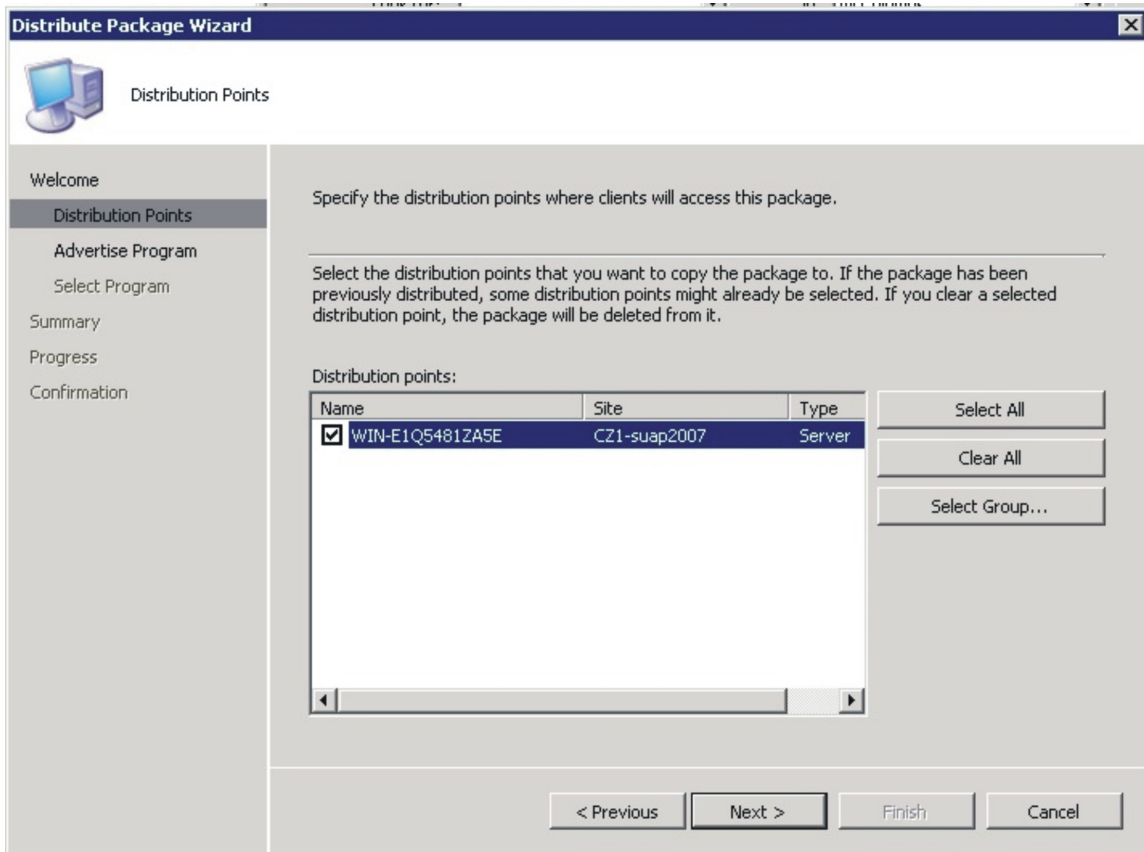


Figure 14. Distribution Points page

- Step 6. On the Advertise Program page, specify whether to advertise a program from this package to client resources. Select **Yes** and click **Next**.

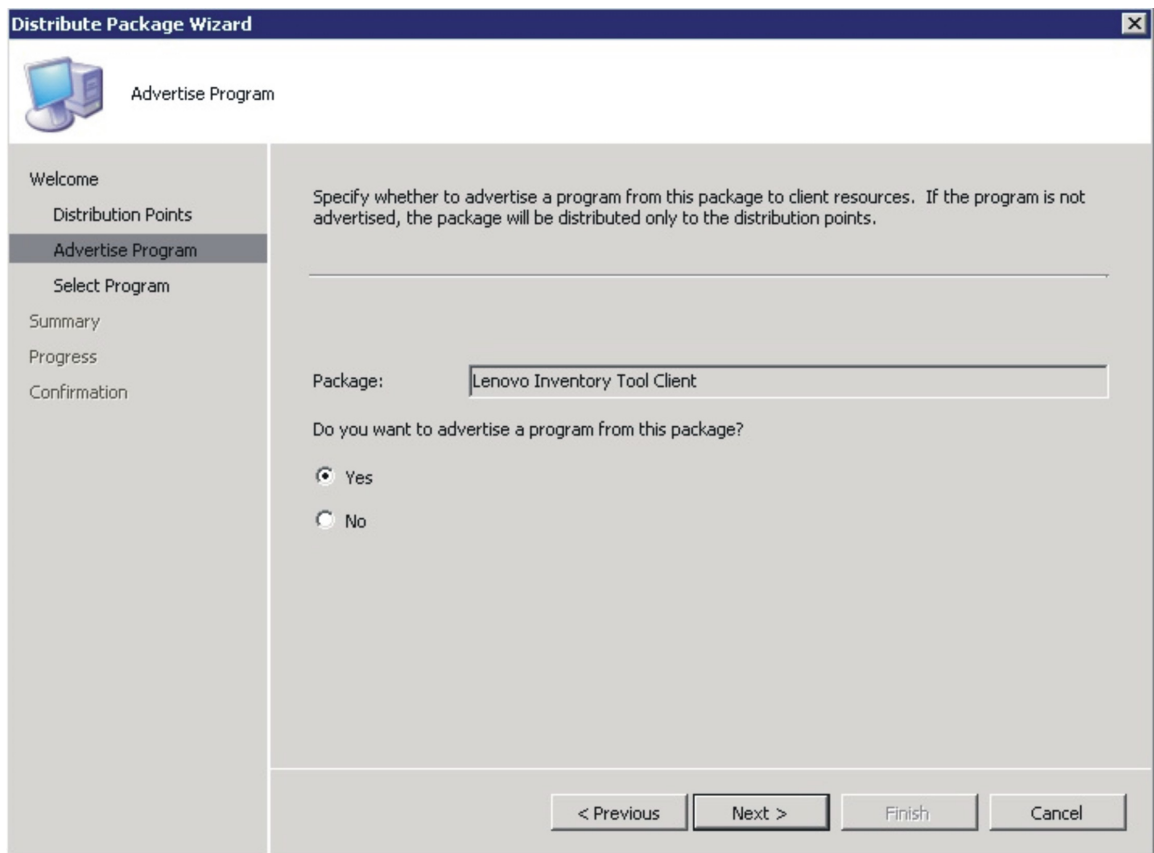


Figure 15. Advertise Program page

- Step 7. On the Select Program page, select the program to advertise to members of a collection, and then click **Next**.

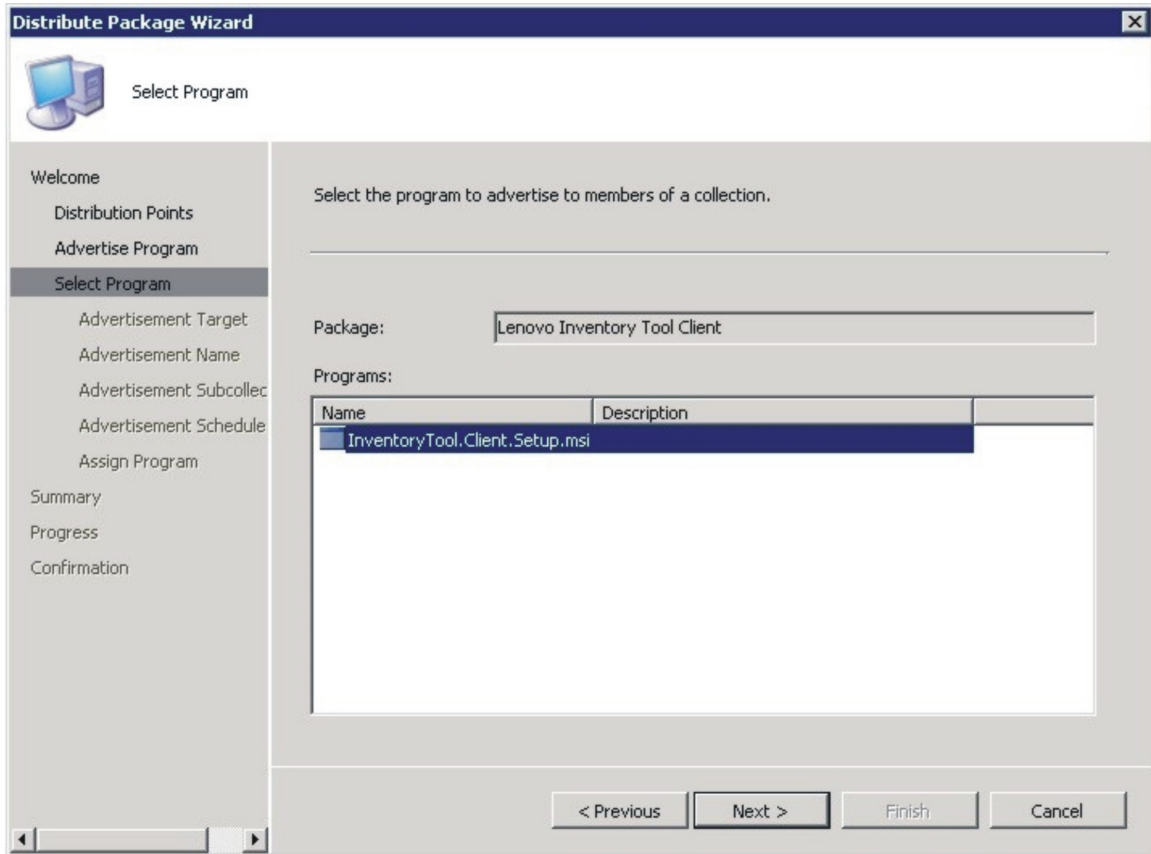


Figure 16. Select Program page

- Step 8. On the Advertisement Target page, select the existing collection that you want to advertise, and then click **Next**.

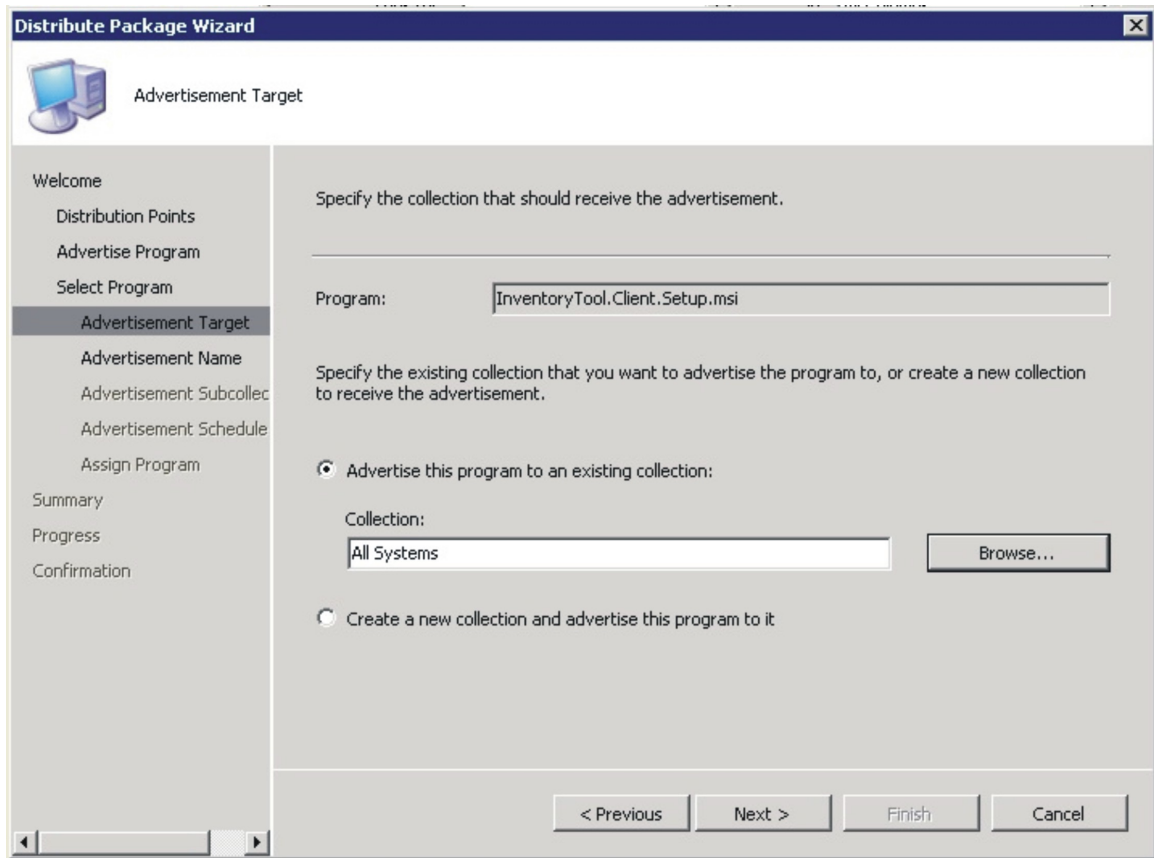


Figure 17. Advertisement Target page

- Step 9. On the Advertisement Name page, choose whether to modify the following information, and when you are finished, click **Next**.

Name

Enter a different name if you do not want to use the default name that is provided.

Comment

Enter a detailed description that will help you to identify the advertisement.

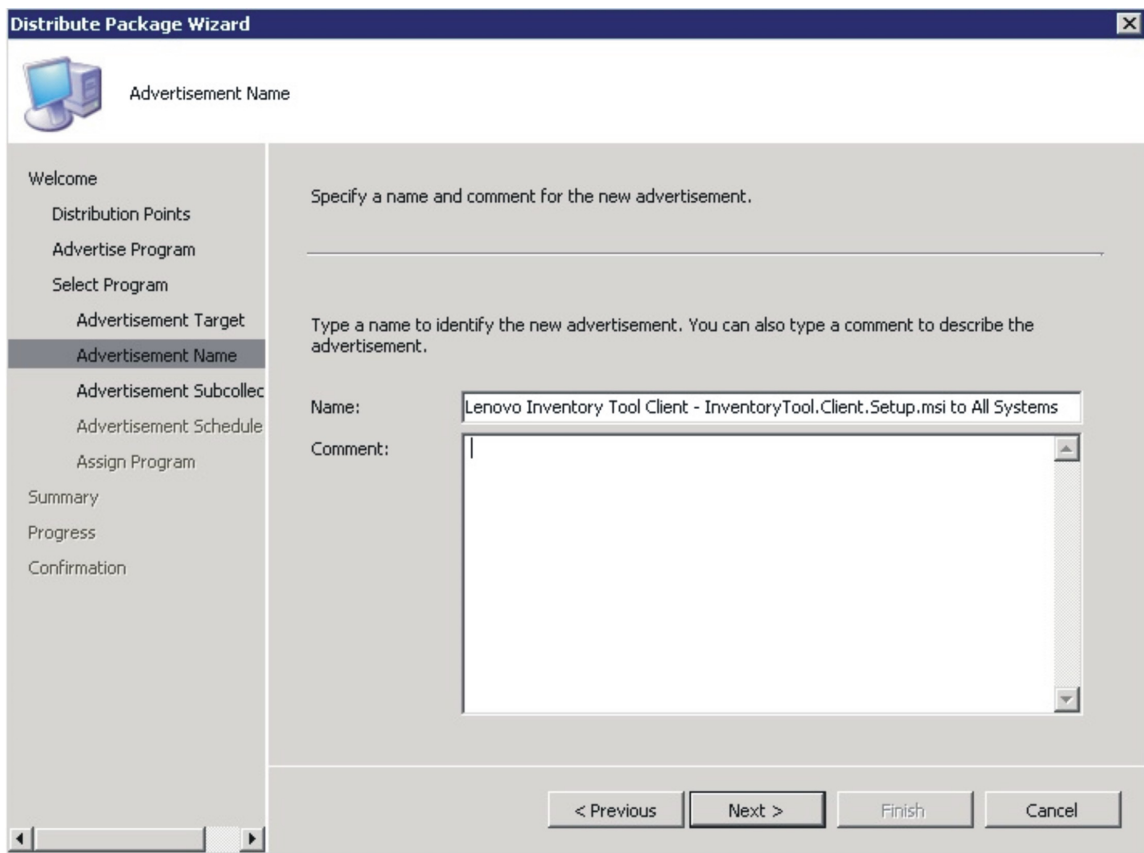


Figure 18. Advertisement Name page

- Step 10. On the Advertisement Subcollection page, select whether the advertisement should be made available to the members of the collection only or to the members of the collection and its subcollections.

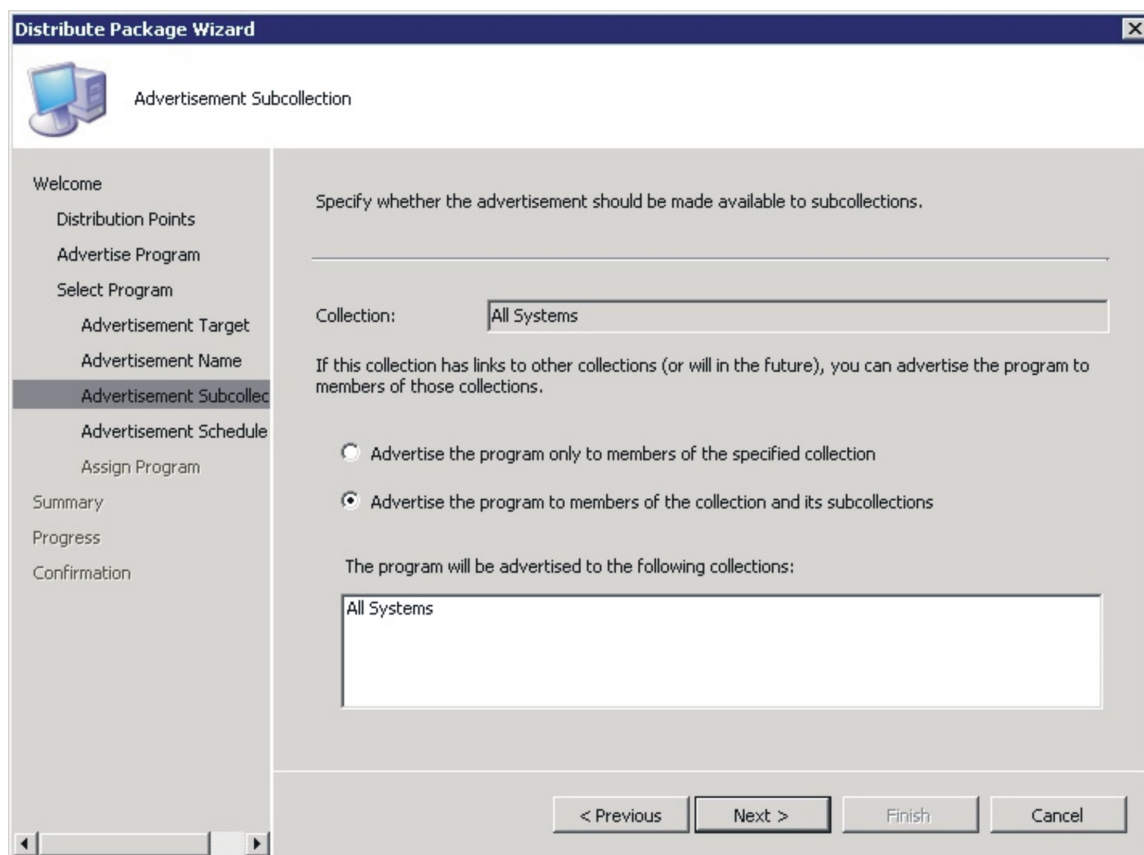


Figure 19. Advertisement Subcollection page

- Step 11. On the Advertisement Schedule page, either select or modify the following options, and click **Next**.
- Select a date and time for the software to be advertised.
 - Select whether this advertisement should expire.
 - Select whether the client can download content from an unprotected distribution point and run locally.

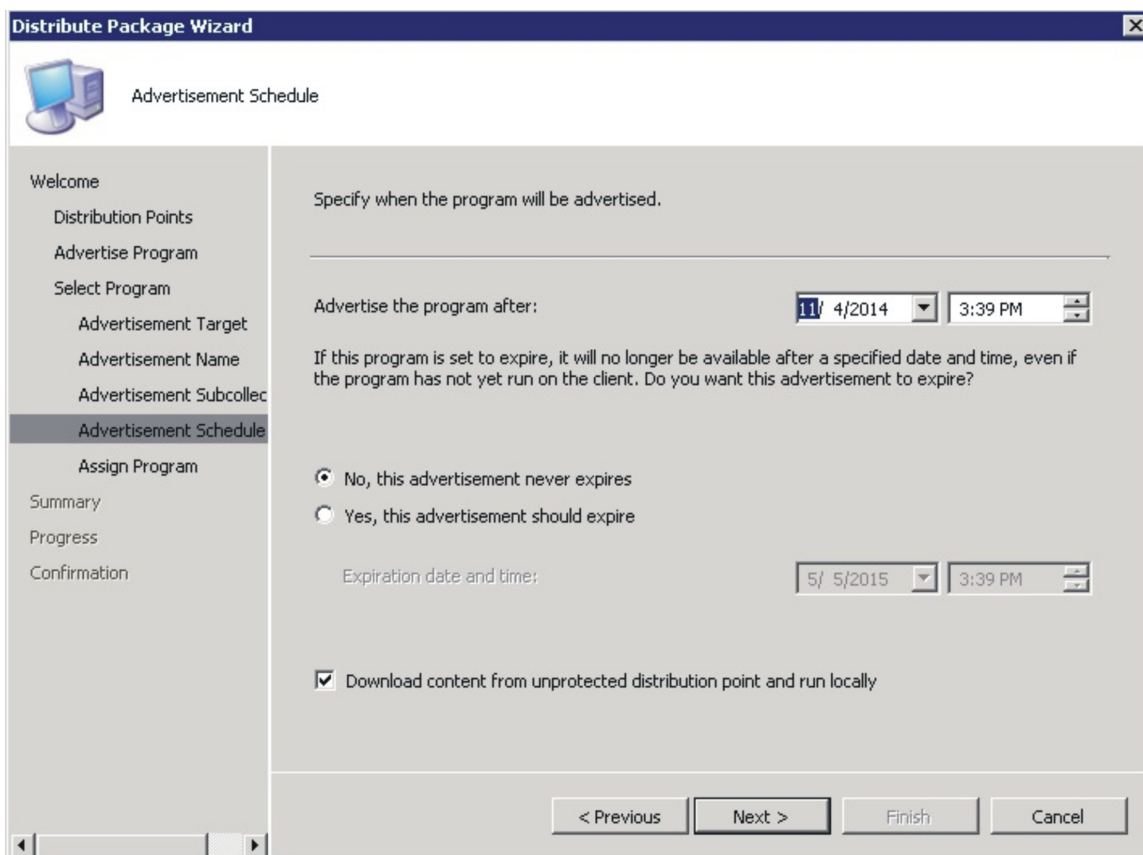


Figure 20. Advertisement Schedule page

Step 12. On the Assign Program page, make the following selections and click **Next**.

- Select whether to assign the program.
- Enable wake on LAN if it is urgent.
- Select whether to ignore maintenance windows when running the program.
- Select whether to allow a system restart outside maintenance windows.

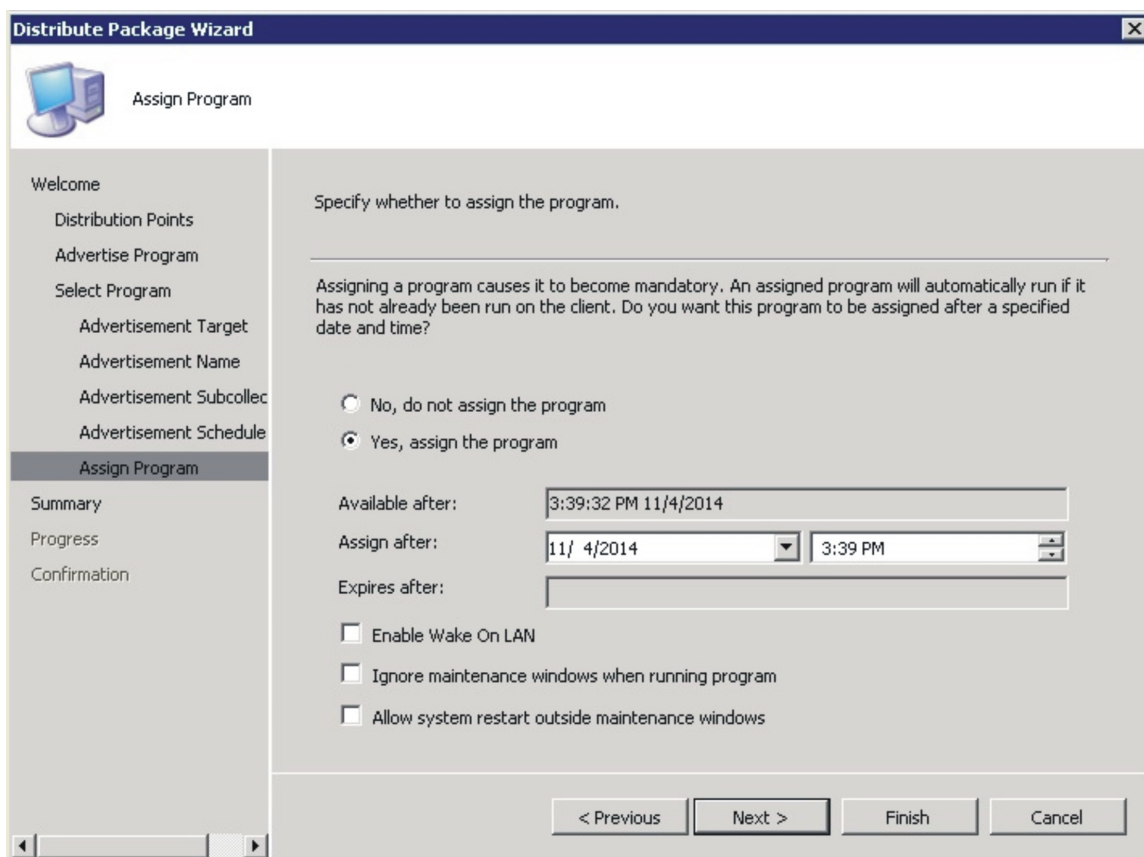


Figure 21. Assign Program page

- Step 13. On the Wizard Completed page, you can review the options that have been selected, then click **Close** to finish the distribution.

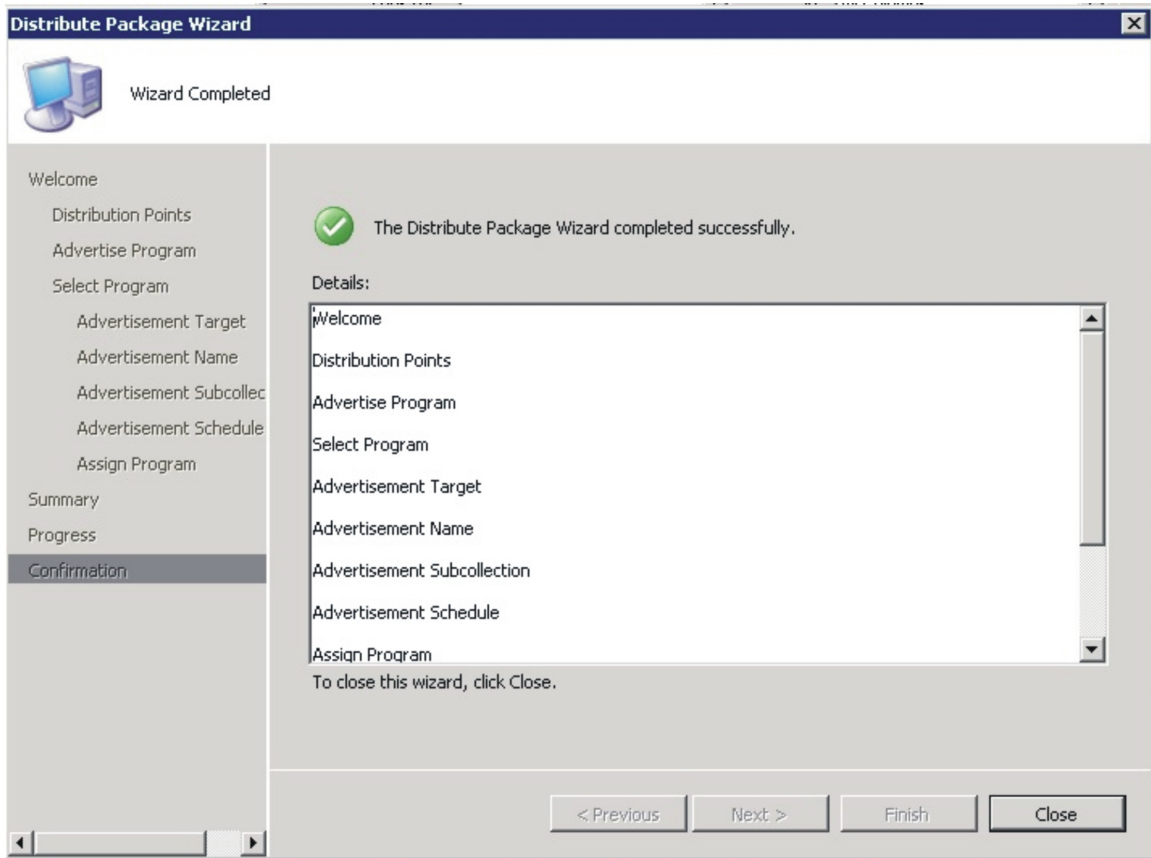


Figure 22. Wizard Completed page

Viewing hardware inventory of clients from the Microsoft System Center Configuration Manager server

When Lenovo Inventory Tool Client has been installed on the client, it can be run periodically to retrieve a hardware inventory from the Microsoft System Center Configuration Manager server.

The following procedure describes how to look for hardware inventory of clients from the SCCM server,

- Step 1. Open the SCCM console.
- Step 2. Expand **Computer Management** → **Collections** → **ALL Systems**.

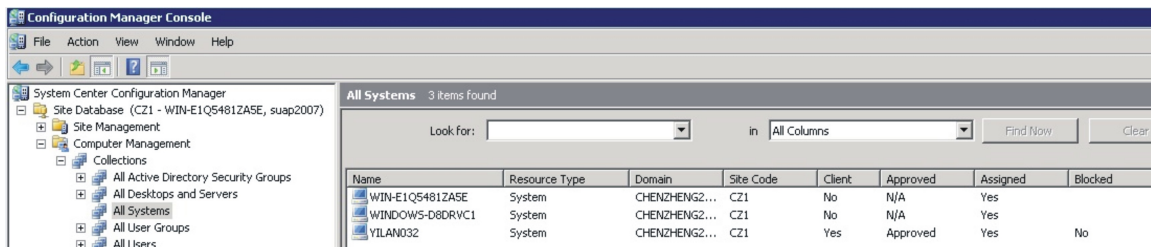


Figure 23. Select client

- Step 3. Right-click the device on the right panel that you want to inventory. Select **Start**, and then click **Resource Explorer**.

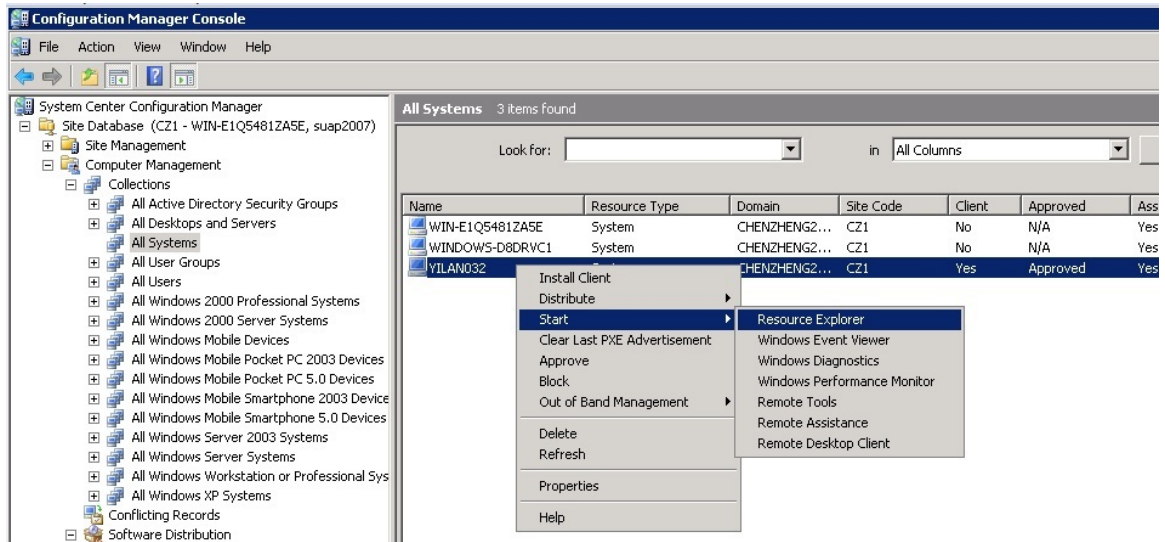


Figure 24. Start Resource Explorer wizard

Step 4. Expand **Resource Explorer** → **Hardware**, and then select the resource beginning with **Lenovo**. The inventory information you requested is shown on the right panel.

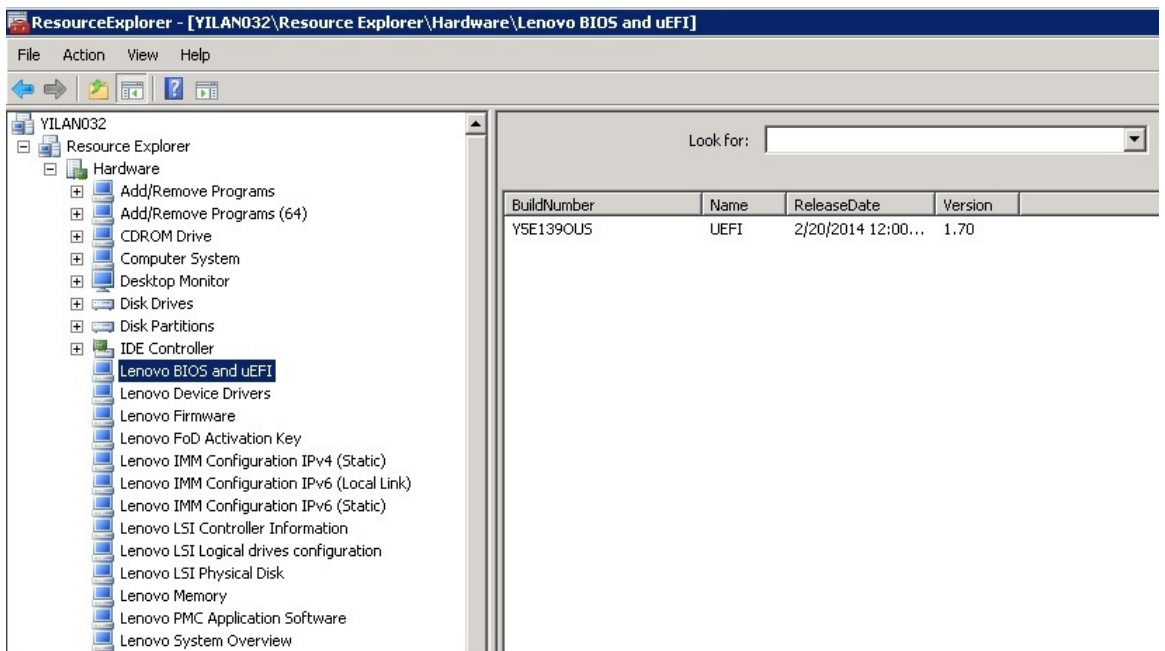


Figure 25. Look for hardware inventory

Chapter 4. Working with Lenovo Inventory Tool and Microsoft System Center Configuration 2012

The topics in this section describe how Lenovo Inventory Tool and Microsoft System Center Configuration Manager 2012 work together.

Deploying the Lenovo Inventory Tool client package from the Microsoft System Center Configuration Manager server to Microsoft System Center Configuration Manager client

The Lenovo Inventory Tool Client package contains the file `Lenovo Inventory Tool Client Setup.msi`, which is used to install Lenovo Inventory Tool client to the target machine.

The following procedure describes how to deploy an Lenovo Inventory Tool Client package from the SCCM server to the SCCM client.

- Step 1. Open the SCCM console.
- Step 2. Expand **Software Library** → **Overview** → **Application management** → **Packages**.

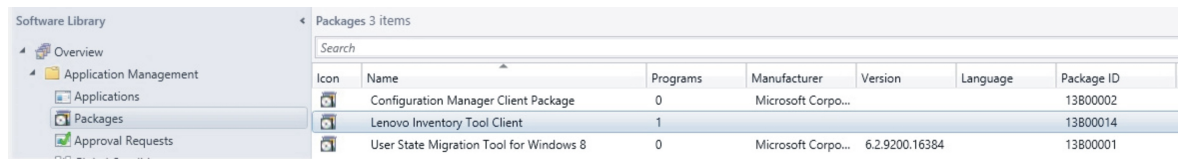


Figure 26. Lenovo Inventory ToolClient package

- Step 3. On the right panel, right-click **Lenovo Inventory Tool Client**, and select **Deploy**.

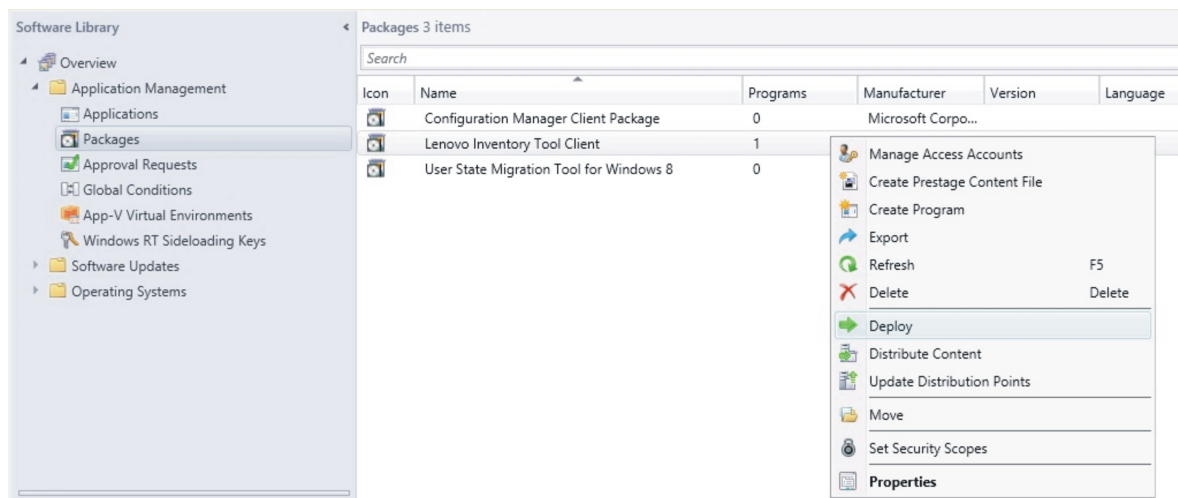


Figure 27. Deploy Lenovo Inventory Tool package

- Step 4. On the General page, enter the following information, and click **Next**.

Collection

Click **Browse**, and select the collection to be deployed.

Comments

Enter a detailed description that will help you to identify the deployment.

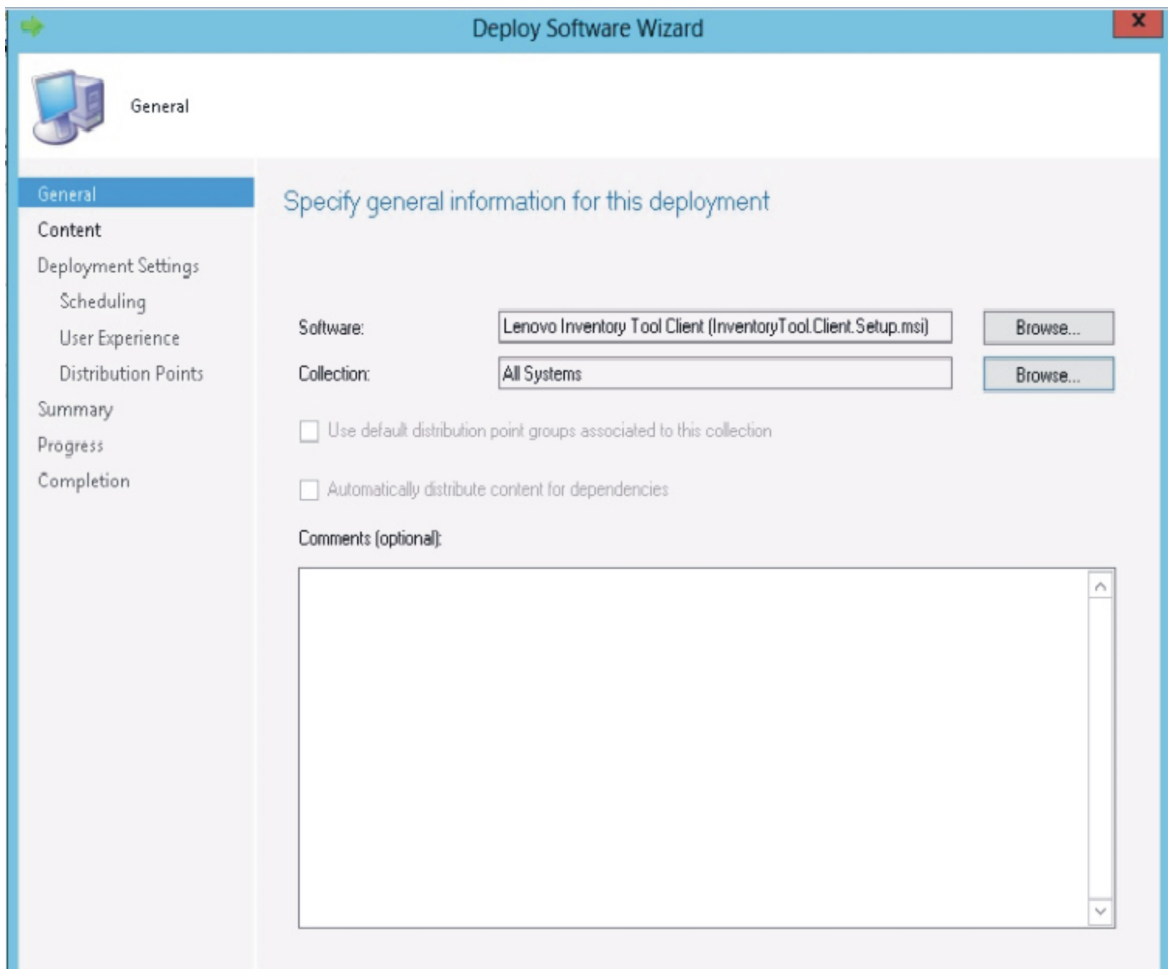


Figure 28. General page

- Step 5. On the Content page, click **Add** to add distribution points or distribution point groups, and click **Next**.

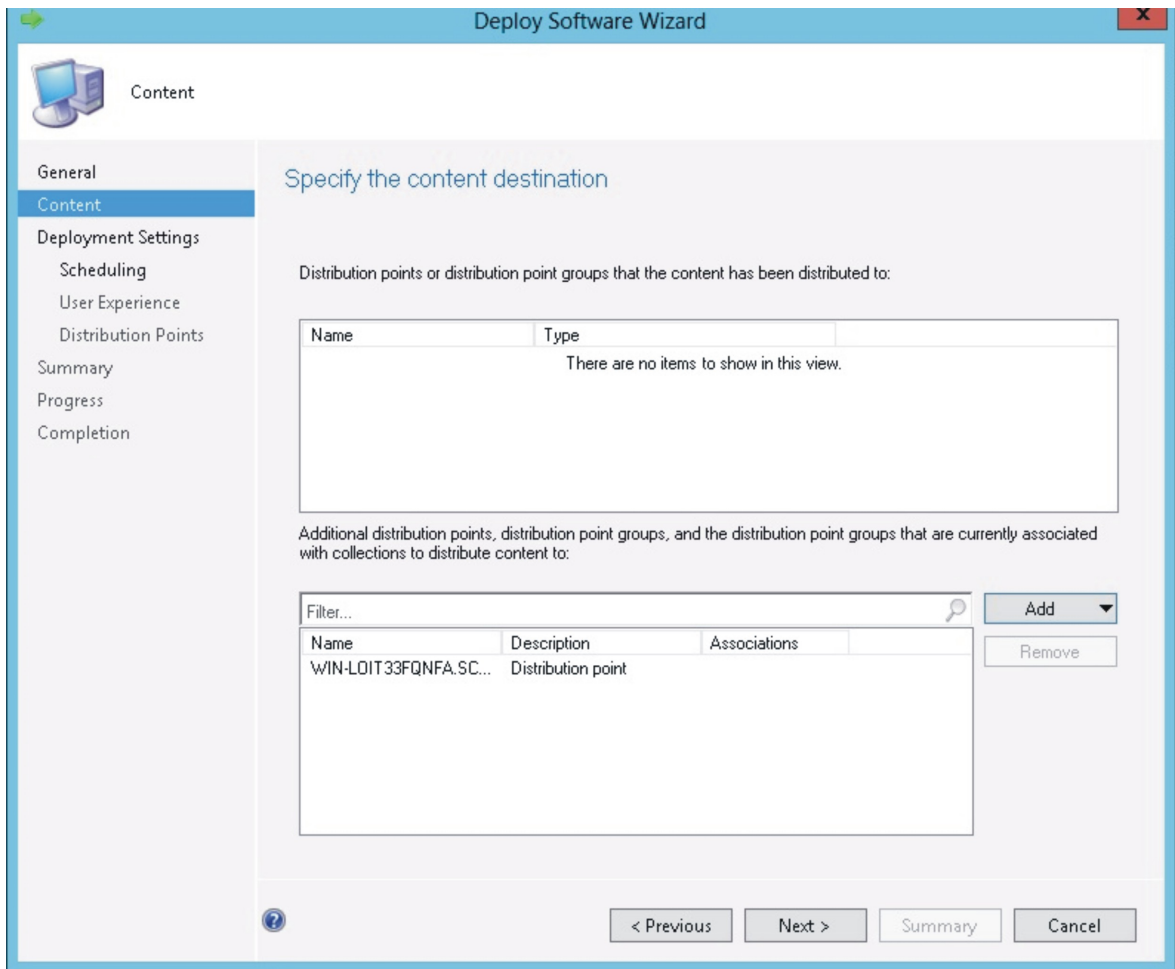


Figure 29. Content page

Step 6. On the Deployment Settings page, specify the settings that control how the software is deployed, and click **Next**.

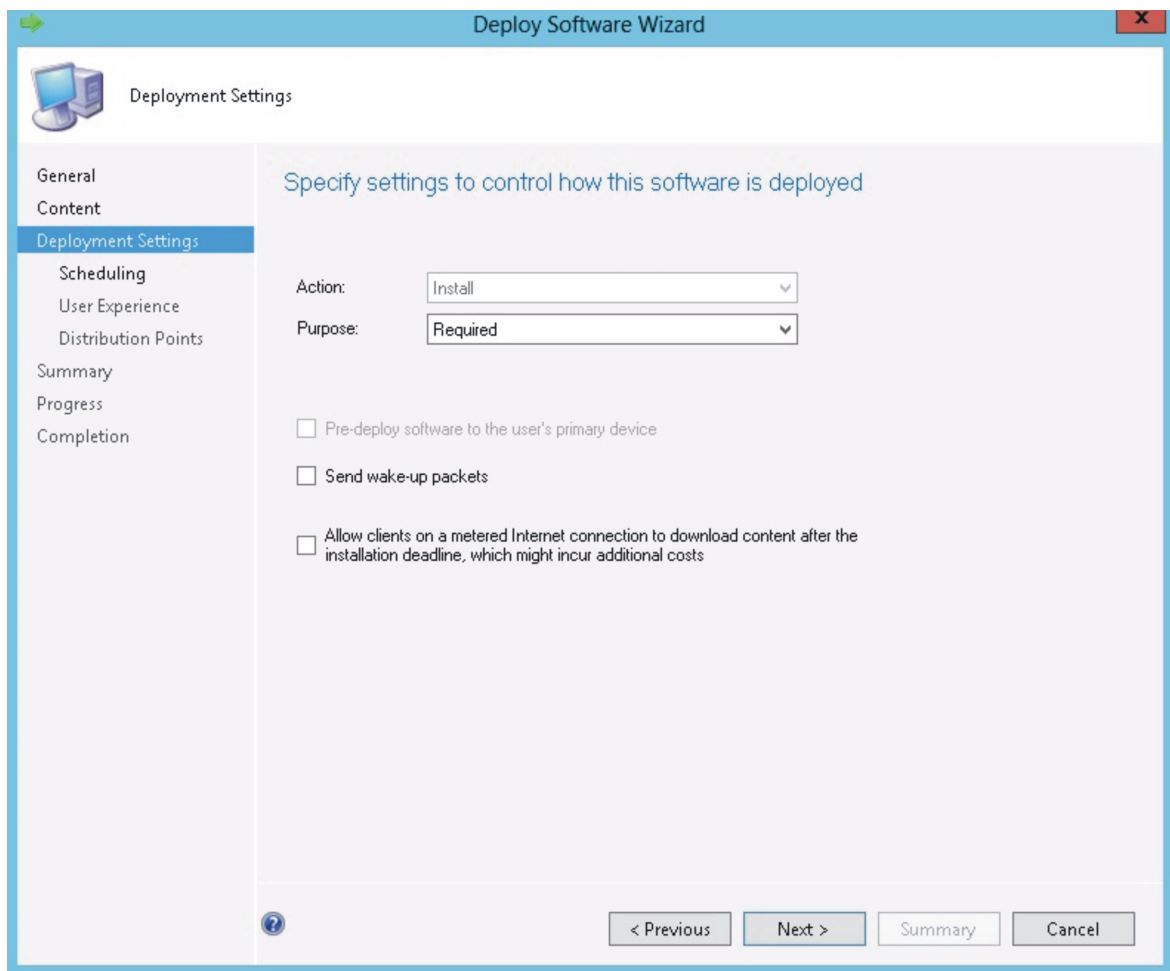


Figure 30. Deployment Settings page

- Step 7. On the Scheduling page, configure the deployment and assignment schedule if necessary. Select **As soon as possible** if you want to deploy the inventory tool client immediately.

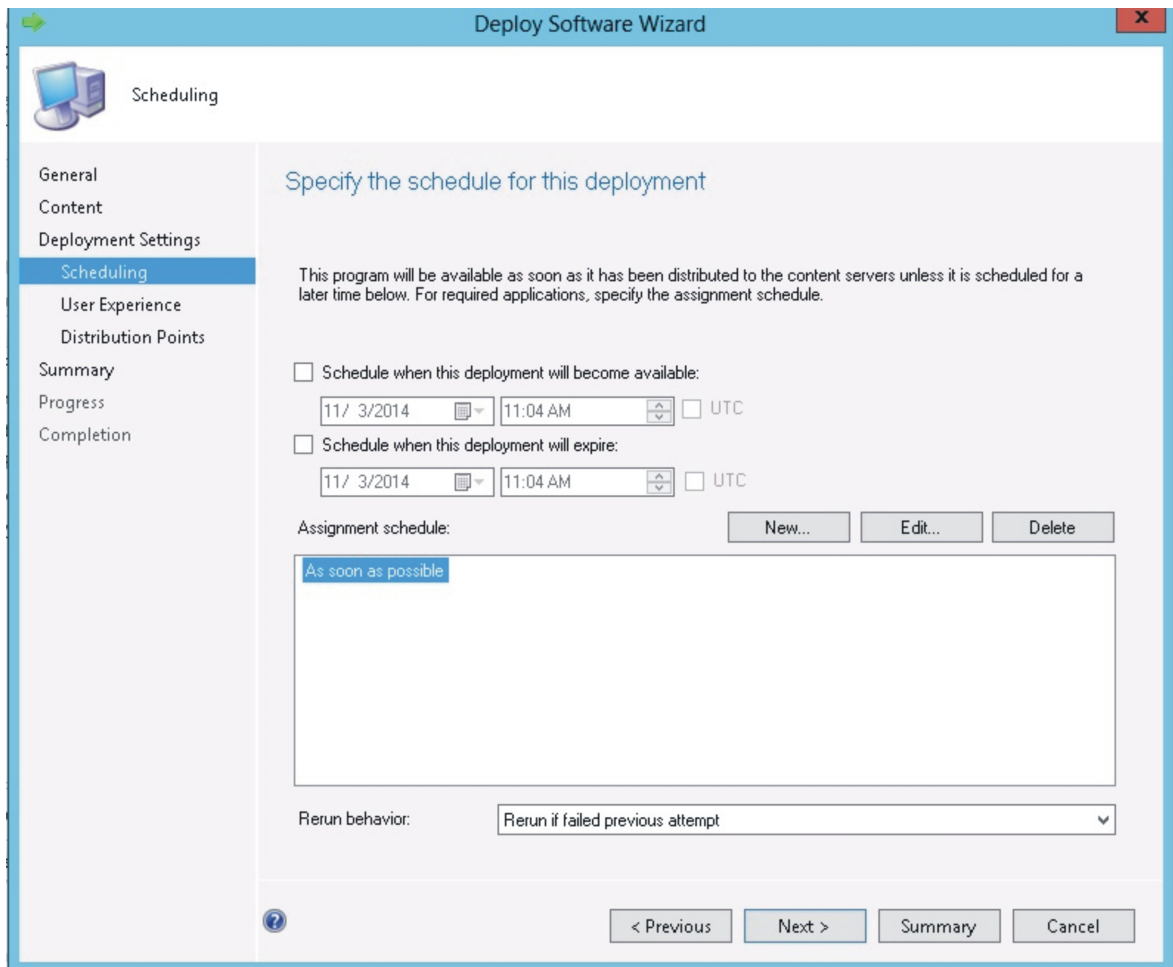


Figure 31. Scheduling page

Step 8. Optional: On the User Experience page, select the checkbox if needed.

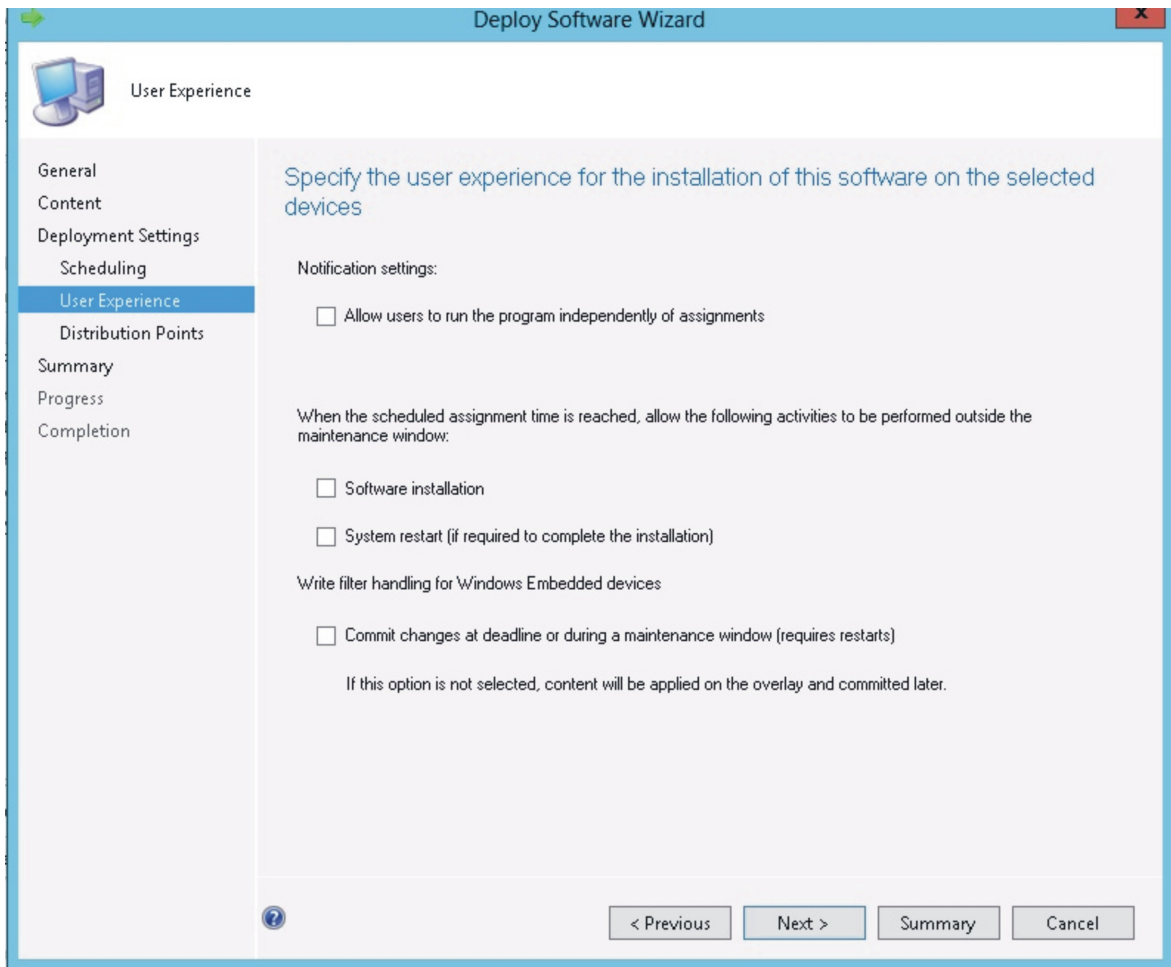


Figure 32. User Experience page

Step 9. On the Summary page, review the configuration settings, and click **Next** to begin the deployment process.

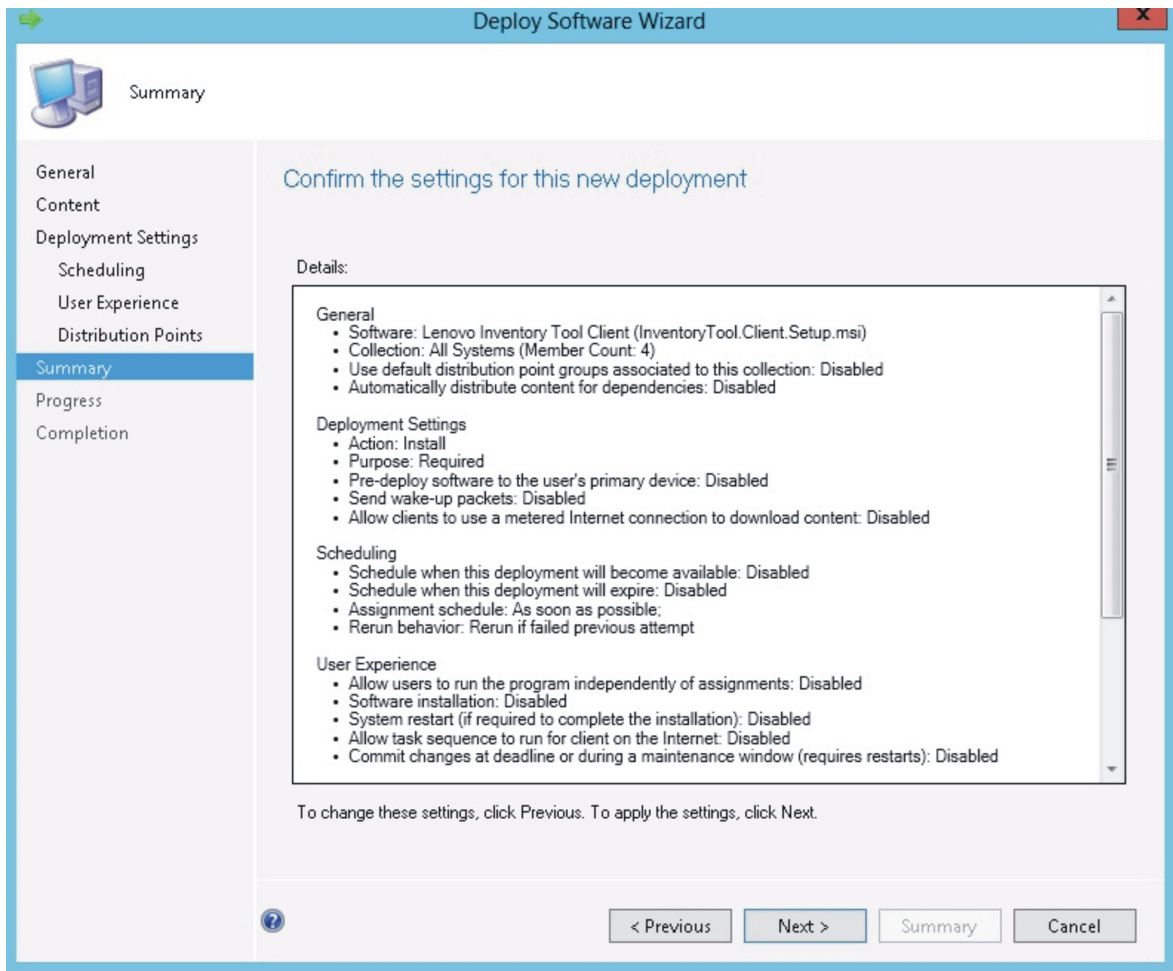


Figure 33. Summary page

Step 10. On the Completion page, click **Close** to finish the deployment.

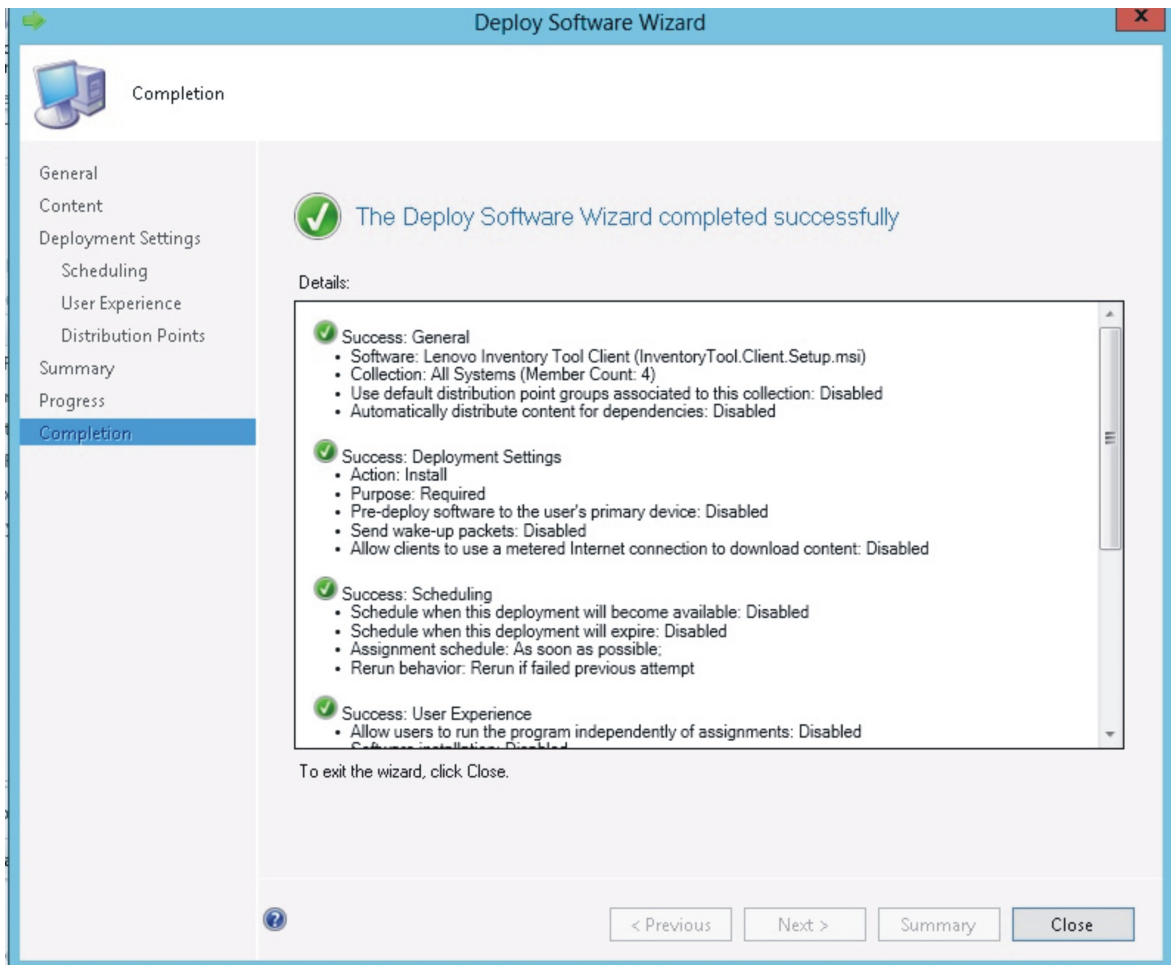


Figure 34. Completion page

Viewing hardware inventory of clients from the Microsoft System Center Configuration Manager server

When the Lenovo Inventory Tool Client has been installed, it can be run periodically to retrieve a hardware inventory from the Microsoft System Center Configuration Manager server.

The following procedure describes how to view a hardware inventory of clients from the SCCM server.

- Step 1. Open the SCCM console.
- Step 2. Expand **Assets and Compliance** → **Overview** → **Devices**.

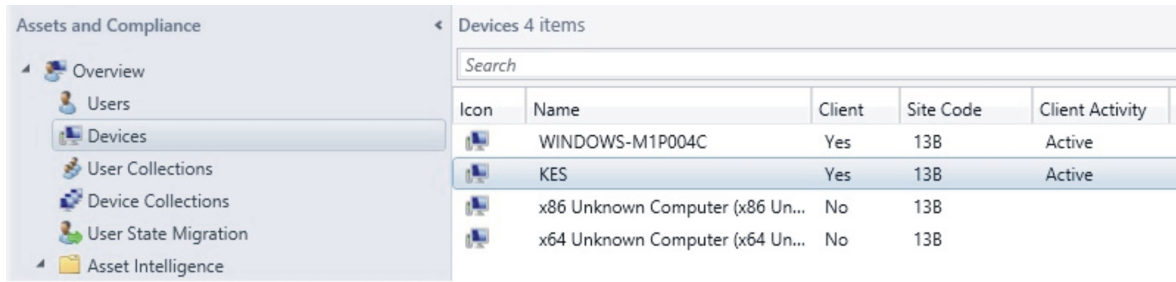


Figure 35. Select client

Step 3. Right-click the devices on the right panel that you want to inventory. Select **Start**, and then click **Resource Explorer**.

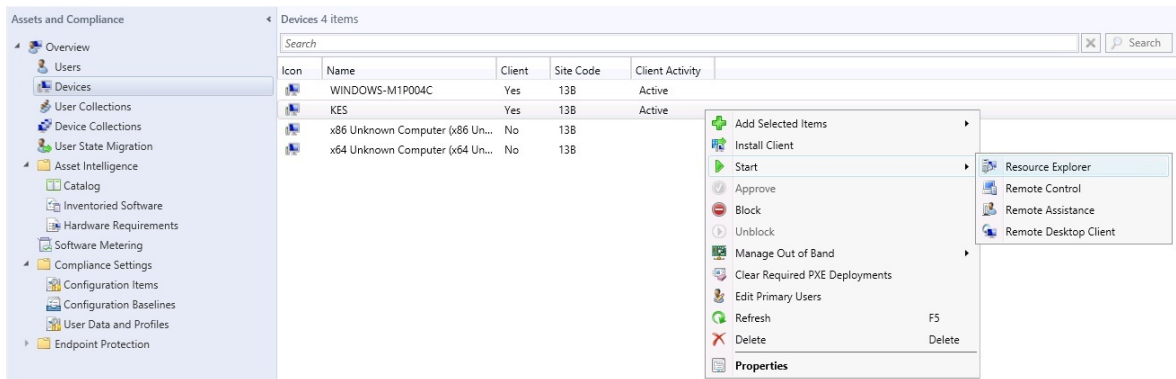


Figure 36. Start Resource Explorer

Step 4. Expand **Resource Explorer** → **Hardware**, and then select the resource beginning with **Lenovo**. The inventory information is shown on the right panel.

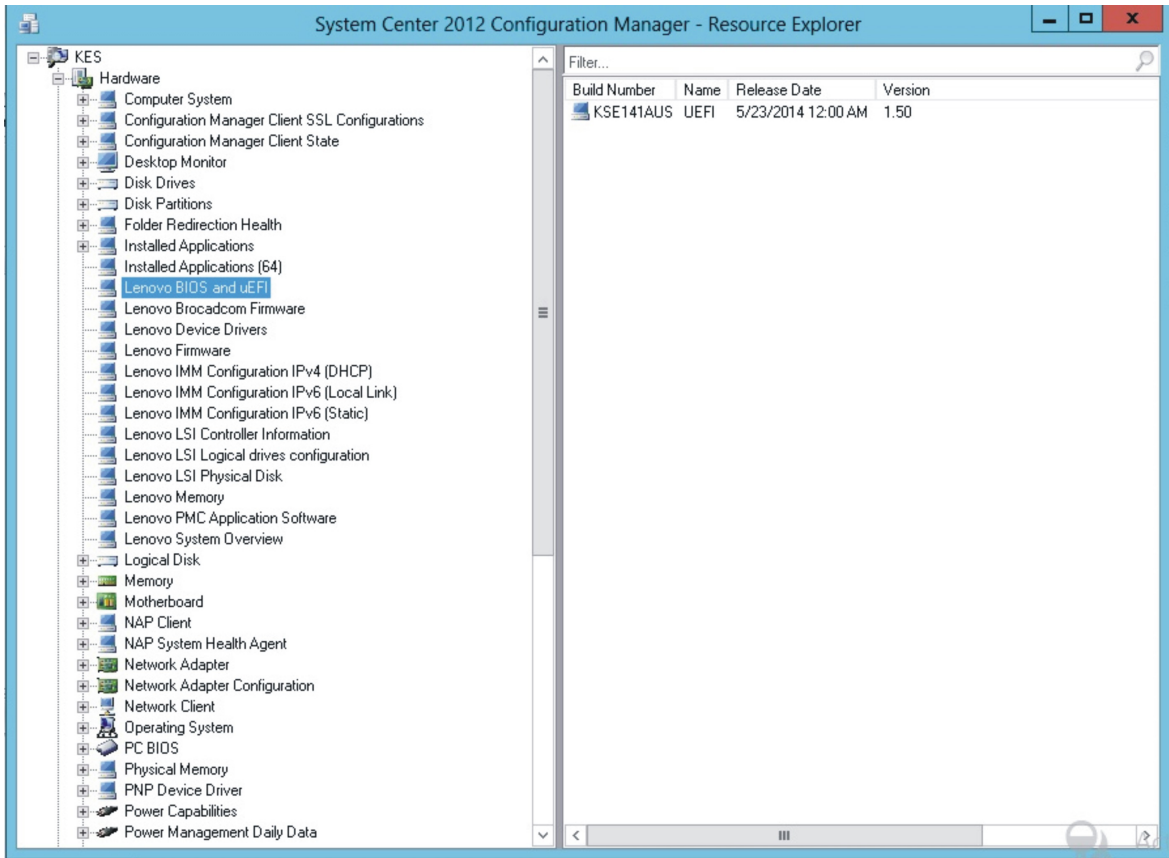


Figure 37. View hardware inventory

Appendix A. Troubleshooting

This section provides information to help you resolve issues that might arise.

Lenovo Inventory Tool **cannot be installed**

.NET Framework 2.0, 3.0, or 3.5 must be installed on the SCCM server as a prerequisite for the Lenovo Inventory Tool installation.

Issue: Lenovo Inventory Tool **cannot install.**

Possible solution:

Either install or ensure that .NET Framework 2.0, 3.0, or 3.5 is installed on the SCCM server or client.

Appendix B. Accessibility features

Accessibility features help users who have a physical disability, such as restricted mobility or limited vision, to use information technology products successfully.

Lenovo strives to provide products with usable access for everyone, regardless of age or ability.

Lenovo Inventory Tool for Microsoft System Center Configuration Manager supports the accessibility features of the system management software in which they are integrated. Refer to your system management software documentation for specific information about accessibility features and keyboard navigation.

The Lenovo Inventory Tool topic collection and its related publications are accessibility-enabled for the IBM Home Page Reader. You can operate all features using the keyboard instead of the mouse.

You can view the publications for Lenovo Inventory Tool for Microsoft System Center Configuration Manager in Adobe Portable Document Format (PDF) using the Adobe Acrobat Reader. You can access the PDFs from the Lenovo Inventory Tool for Microsoft System Center Configuration Manager download site.

IBM and accessibility

See the [Lenovo Accessibility website](#) for more information about the commitment that IBM has to accessibility.

Appendix C. System firewall settings

This section describes how to set firewall exceptions.

The following table list the ports used by Lenovo Inventory Tool for SCCM.

Table 4. Ports used by Lenovo Inventory Tool for Microsoft System Center Configuration Manager

Source			Target			Protocol
Port	Location	Component	Port	Location	Component	
Not specified	Management server	SCCM Inventory Tool	TCP 5988	Managed server	BMC	HTTP, CIM, SLP
Not specified	Management server	SCCM Inventory Tool	TCP 5989	Managed server	BMC	HTTPS, CIM, SLP

Note: You can change the BMC HTTP/HTTPS ports in BMC portal.

Appendix D. Notices

Lenovo may not offer the products, services, or features discussed in this document in all countries. Consult your local Lenovo representative for information on the products and services currently available in your area.

Any reference to a Lenovo product, program, or service is not intended to state or imply that only that Lenovo product, program, or service may be used. Any functionally equivalent product, program, or service that does not infringe any Lenovo intellectual property right may be used instead. However, it is the user's responsibility to evaluate and verify the operation of any other product, program, or service.

Lenovo may have patents or pending patent applications covering subject matter described in this document. The furnishing of this document does not give you any license to these patents. You can send license inquiries, in writing, to:

*Lenovo (United States), Inc.
8001 Development Drive
Morrisville, NC 27560
U.S.A.
Attention: Lenovo Director of Licensing*

LENOVO PROVIDES THIS PUBLICATION "AS IS" WITHOUT WARRANTY OF ANY KIND, EITHER EXPRESS OR IMPLIED, INCLUDING, BUT NOT LIMITED TO, THE IMPLIED WARRANTIES OF NON-INFRINGEMENT, MERCHANTABILITY OR FITNESS FOR A PARTICULAR PURPOSE. Some jurisdictions do not allow disclaimer of express or implied warranties in certain transactions, therefore, this statement may not apply to you.

This information could include technical inaccuracies or typographical errors. Changes are periodically made to the information herein; these changes will be incorporated in new editions of the publication. Lenovo may make improvements and/or changes in the product(s) and/or the program(s) described in this publication at any time without notice.

The products described in this document are not intended for use in implantation or other life support applications where malfunction may result in injury or death to persons. The information contained in this document does not affect or change Lenovo product specifications or warranties. Nothing in this document shall operate as an express or implied license or indemnity under the intellectual property rights of Lenovo or third parties. All information contained in this document was obtained in specific environments and is presented as an illustration. The result obtained in other operating environments may vary.

Lenovo may use or distribute any of the information you supply in any way it believes appropriate without incurring any obligation to you.

Any references in this publication to non-Lenovo Web sites are provided for convenience only and do not in any manner serve as an endorsement of those Web sites. The materials at those Web sites are not part of the materials for this Lenovo product, and use of those Web sites is at your own risk.

Any performance data contained herein was determined in a controlled environment. Therefore, the result obtained in other operating environments may vary significantly. Some measurements may have been made on development-level systems and there is no guarantee that these measurements will be the same on generally available systems. Furthermore, some measurements may have been estimated through extrapolation. Actual results may vary. Users of this document should verify the applicable data for their specific environment.

Trademarks

Lenovo, the Lenovo logo, Flex System, System x, and NeXtScale System are trademarks of Lenovo in the United States, other countries, or both.

Intel and Intel Xeon are trademarks of Intel Corporation in the United States, other countries, or both.

Internet Explorer, Microsoft, and Windows are trademarks of the Microsoft group of companies.

Linux is a registered trademark of Linus Torvalds.

Other company, product, or service names may be trademarks or service marks of others.

Important notes

Processor speed indicates the internal clock speed of the microprocessor; other factors also affect application performance.

When referring to processor storage, real and virtual storage, or channel volume, KB stands for 1 024 bytes, MB stands for 1 048 576 bytes, and GB stands for 1 073 741 824 bytes.

When referring to hard disk drive capacity or communications volume, MB stands for 1 000 000 bytes, and GB stands for 1 000 000 000 bytes. Total user-accessible capacity can vary depending on operating environments.

Lenovo makes no representations or warranties with respect to non-Lenovo products. Support (if any) for the non-Lenovo products is provided by the third party, not Lenovo.

Some software might differ from its retail version (if available) and might not include user manuals or all program functionality.

Lenovo[™]