



# Lenovo XClarity Integrator for Microsoft Windows Admin Center Quick Start Guide



**Version 4.1.0**

**Fifteenth Edition (September 2022)**

**© Copyright Lenovo 2018, 2022.**

**LIMITED AND RESTRICTED RIGHTS NOTICE: If data or software is delivered pursuant to a General Services Administration (GSA) contract, use, reproduction, or disclosure is subject to restrictions set forth in Contract No. GS-35F-05925.**

---

# Contents

**Contents . . . . . i**

**Chapter 1. Get started with Lenovo XClarity Integrator for Microsoft Windows Admin Center . . . . . 1**

Install Windows Admin Center and Lenovo XClarity Integrator for Windows Admin Center extension . . . . 1  
Configure HTTP Proxy . . . . . 1  
Manage credentials . . . . . 2  
Check firmware/driver updates . . . . . 2  
Manage Windows servers in Server Manager . . . . . 2  
Manage cluster nodes in Cluster Manager . . . . . 3  
Update firmware/drivers when creating an Azure Stack HCI cluster . . . . . 3

Update firmware/drivers with the Cluster-Aware Updating tool in Cluster Manager . . . . . 3  
Use the Lenovo XClarity Integrator extension . . . . . 4  
Report problems to Lenovo . . . . . 5

**Chapter 2. Key functions . . . . . 7**

**Chapter 3. Web resources . . . . . 9**

**Appendix A. Notices. . . . . 11**

Trademarks . . . . . 12  
Important notes. . . . . 12



---

# Chapter 1. Get started with Lenovo XClarity Integrator for Microsoft Windows Admin Center

This Quick Start Guide instructs users to get started with Lenovo XClarity Integrator for Microsoft Windows Admin Center, so that they can manage their servers in an easy way. Using this guide, you will know how to do the following:

- “Install Windows Admin Center and Lenovo XClarity Integrator for Windows Admin Center extension” on page 1
- “Configure HTTP Proxy” on page 1
- “Manage credentials” on page 2
- “Check firmware/driver updates” on page 2
- “Manage Windows servers in Server Manager” on page 2
- “Manage cluster nodes in Cluster Manager” on page 3
- “Update firmware/drivers when creating an Azure Stack HCI cluster” on page 3
- “Use the Lenovo XClarity Integrator extension” on page 4
- “Report problems to Lenovo” on page 5

---

## Install Windows Admin Center and Lenovo XClarity Integrator for Windows Admin Center extension

### Procedure

Step 1. Install Microsoft Windows Admin Center. Refer to [Windows Admin Center official website](#).

Step 2. Install Lenovo XClarity Integrator for Microsoft Windows Admin Center.

- a. Log in to Windows Admin Center.
- b. Click the settings icon in the top right corner.  
The Settings page is displayed.
- c. On the Settings page, click **Extensions** in the left navigation pane.  
The **Extensions** pane is displayed.
- d. On the **Extensions** pane, click the **Available extensions** tab.
- e. On the **Available extensions** tab, select **Lenovo XClarity Integrator** from the list. The license information will be displayed.
- f. Read the license information. If you accept the license information, click **Install**.

**Note:** If an earlier version of Lenovo XClarity Integrator for Microsoft Windows Admin Center has been installed, remove it and install a later version, or upgrade it.

---

## Configure HTTP Proxy

Ensure Internet connectivity on the Windows system to be installed with the Lenovo XClarity Integrator extension. Alternatively, configure Proxy in the Lenovo XClarity Integrator extension.

### Procedure

- Step 1. In the Lenovo XClarity Integrator extension, click the more icon in the top right corner.  
A menu is displayed.

- Step 2. In the menu, click **Settings**.
- Step 3. On the Internet Access page:
- Enable HTTP Proxy.
  - Specify the Proxy server host and port.
  - If authentication is enabled, specify the username and password.
  - Click **Test URL**.  
A success message will be displayed if the Internet access test passes.
  - Click **Apply**.

**Note:** Internet connectivity is critical to lots of functions.

---

## Manage credentials

### Procedure

- Step 1. In the Lenovo XClarity Integrator extension, click the more icon in the top right corner.  
A menu is displayed.
- Step 2. In the menu, click **Settings → Credential Manager**.
- Step 3. On the Credential Manager page, you can add, edit, or delete a credential.

**Note:** The settings in this page influence the settings on the Report Problem page and the alert bar in any of Lenovo extensions.

---

## Check firmware/driver updates

### Procedure

- Step 1. In the Lenovo XClarity Integrator extension, click the repository icon in the top right corner.  
The System Updates Repository page is displayed.
- Step 2. Choose **...(More icon) → Select Machine Types** from the action bar to select machines types of your servers if they are not listed in the product catalog.
- Step 3. Click the refresh catalog button to check online system update packages.

---

## Manage Windows servers in Server Manager

### Procedure

- Step 1. Open Server Manager of Windows Admin Center, and then select a server to enter its management page.
- Step 2. In the left navigation pane of the server page, click **Lenovo XClarity Integrator** or **XC**.
- Step 3. Choose either of the following management methods to continue:
- If no Lenovo XClarity Administrator is available, choose **Native OS Management** and then click **Take me there** to open the management dashboard.
  - Choose **Lenovo XClarity Administrator**. (Refer to [“Use the Lenovo XClarity Integrator extension” on page 4](#)).
- The Summary page of the managed server is automatically displayed.
- Step 4. On the Summary page, manage the server as required.

---

## Manage cluster nodes in Cluster Manager

### Procedure

- Step 1. Open Cluster Manager of Windows Admin Center, and then select a cluster to enter its management page.
- Step 2. In the left navigation pane of the server page, click **Lenovo XClarity Integrator** or **XC**.
- Step 3. Choose either of the following management methods to continue:
  - If no Lenovo XClarity Administrator is available, choose **Native OS Management** and then click **Take me there** to open the management dashboard.
  - Choose **Lenovo XClarity Administrator**. (Refer to [“Use the Lenovo XClarity Integrator extension” on page 4](#)).

The Dashboard page of the managed cluster is automatically displayed.
- Step 4. On the Dashboard page, manage the cluster nodes as required.

---

## Update firmware/drivers when creating an Azure Stack HCI cluster

### Procedure

- Step 1. Open the Azure Stack HCI cluster deployment wizard, complete all required steps until the **Install hardware updates** step, and then click **Get updates**.
- Step 2. Choose either of the following management methods to continue:
  - If no Lenovo XClarity Administrator is available, choose **Native OS Management** (recommended) and then click **Take me there** to open the system update wizard.
  - Choose **Lenovo XClarity Administrator**. (Refer to [“Use the Lenovo XClarity Integrator extension” on page 4](#)).

The system update wizard of the managed cluster is automatically displayed.
- Step 3. Select any of the following update methods:
  - Click **Best Recipes (Recommended)**, select a best recipe, which includes a firmware and device driver bundle predefined for Lenovo ThinkAgile MX certified servers.
  - Click **Compliance Policies**, select a policy.
  - Click **Latest Updates**, select a firmware/driver update.
- Step 4. Follow the wizard to complete the update procedure.

---

## Update firmware/drivers with the Cluster-Aware Updating tool in Cluster Manager

### Procedure

- Step 1. Open Cluster Manager of Windows Admin Center, and then select a cluster to enter its management page.
  - Step 2. In the left navigation pane of the cluster page, click **Updates**.
  - Step 3. In the Updates page, select one or more target quality updates and click **Install**.
- Note:** If there is no available quality updates, hardware updates cannot be installed in CAU tool.
- Step 4. Choose either of the following management methods to continue:

- If no Lenovo XClarity Administrator is available, choose **Native OS Management** (recommended) and then click **Take me there** to open the system update wizard.
- Choose **Lenovo XClarity Administrator**. (Refer to [“Use the Lenovo XClarity Integrator extension”](#) on page 4).

The system update wizard of the managed cluster is automatically displayed.

Step 5. Select any of the following update methods:

- Click **Best Recipes (Recommended)**, select a best recipe, which includes a firmware and device driver bundle predefined for Lenovo ThinkAgile MX certified servers.
- Click **Compliance Policies**, select a policy.
- Click **Latest Updates**, select a firmware/driver update.

Step 6. Follow the wizard to complete the update procedure.

---

## Use the Lenovo XClarity Integrator extension

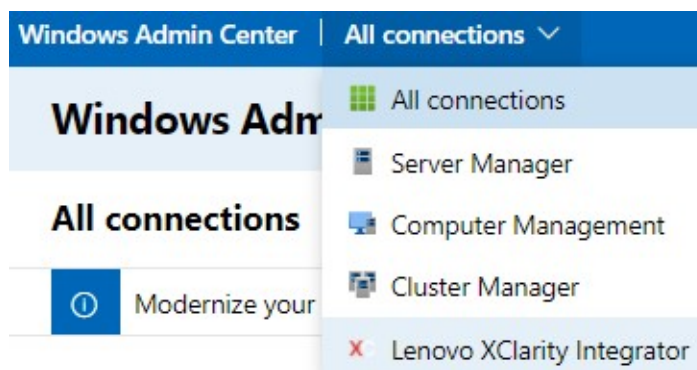
In the previous sections, Native OS management is recommended for server management tasks. Alternatively, Lenovo XClarity Administrator is a second approach as a dependence for server management, especially in case of large-scale deployment of Lenovo servers.

### Procedure

Step 1. Deploy Lenovo XClarity Administrator by referring to [Lenovo XClarity Administrator Updates](#), configure the management network, and assign IP addresses to Lenovo XClarity Administrator appliance and the XCC/IMM of Lenovo servers.

Step 2. Register Lenovo XClarity Administrator in Lenovo XClarity Integrator.

- In Windows Admin Center, select **Lenovo XClarity Integrator** from the drop-down list in the top left corner to open the Lenovo XClarity Integrator extension.



- On the All Connections page, click **Add** and select **Connect to a Lenovo XClarity Administrator**.
- Input the IP address, username, and password of the Lenovo XClarity Administrator you have deployed, and then click **Submit**.

**Note:** Ensure that the user account provided has enough permissions to perform desired operations. For the first user or test, grant the user account the lxc-supervisor role.

After the Lenovo XClarity Administrator is connected, servers being managed by it will be listed.

Step 3. Manage Lenovo servers.

- On the All Connections page, click **Add** and select **Manage Lenovo Rack or Tower Servers**.




- b. Select a Lenovo XClarity Administrator to manage Lenovo servers with it.
- c. Input the XCC/IMM IP address, username, and password, and then click **Manage**.

**Note:** This operation requires some time. To check the progress, click the notification icon in Windows Admin Center. Lenovo XClarity Administrator usually takes some time (15 minutes) to collect inventory or health status data from the server before it becomes fully available. The server successfully managed will be listed under the Lenovo XClarity Administrator.

---

## Report problems to Lenovo

### Procedure

Step 1. In any of Lenovo extensions, click the more icon  on the top right corner, and then click **Call Home** from the menu.

Step 2. Do one or more of the following:

- On the Call Home Contact page, you can add or delete the contact, set the primary contact, check the details of a contact, and sort the contact list.
- On the Report Problem page, you can submit your problem and attach relevant files.

#### Notes:

- This feature is only supported when connecting servers or clusters through native OS management mode or LXCA.
- LXCI automatically collects the required logs and data, and uploads them to Lenovo, including Server Service Data, Cluster Diagnostic Data, Windows Admin Center Log, and Lenovo XClarity Integrator Log. LXCI will automatically retry if any log or data collection is failed.
- On the Service Ticket page, you can delete or search tickets, attach the file or note for a ticket, export, customize, refresh, or sort the ticket list, check or hide the details of the specific ticket, and manually upload the data or log failed to be uploaded in the past 30 days.
- On the Settings page, you can enable or disable the automatic reporting function, add, edit, or remove a host or cluster to be monitored, test the accessibility between the host or cluster and the credential, and enable or disable one or more rules for automatic problem reporting.



---

## Chapter 2. Key functions

The following lists the key functions of Lenovo XClarity Integrator for Microsoft Windows Admin Center.

### Cluster Hardware Health Status

- Overall nodes status
- Status alerts
- Firmware consistency status report
- Power consumption and nodes temperature
- Fans and power supply health status

### Server Inventory & Alerts

- Server summary and operations including remote control, power on/off, and links to XCC/IMM portal
- Server inventory, including available firmware/ driver updates
- Server alerts

### System Update

- Update repository management
- Firmware update for bare metal servers
- Firmware/driver update for Windows servers
- Cluster-aware firmware/driver update for clusters
- Firmware/driver update based on Lenovo-predefined best recipe for Azure HCI clusters running on ThinkAgile MX appliances or certified nodes
- Firmware update based on Lenovo XClarity Administrator compliance policies
- Firmware/driver update history
- Firmware/driver update jobs retry

### ThinkAgile MX Lifecycle Management

- Firmware/driver update for the Azure Stack HCI cluster deployment scenario
- Firmware/driver update for the Azure Stack HCI Cluster-Aware Updating (CAU) scenario

### Disk Manager

- Graphic front/rear view of Lenovo ThinkAgile MX certified nodes
- Azure HCI cluster node servers
- Display of overall storage pool, drive, and server information
- Operations on servers, including turning on or turning off the location LED
- Operations on drives, including turning on or turning off the location LED, replacing a drive in a storage pool, adding a drive to a storage pool, and removing a drive from a server

### Processor Core Tuning

- Enable/disable processor cores for ThinkAgile MX appliances or certified nodes

### Report Problem to Lenovo

- Manually report problems to Lenovo
- Automatically report problems to Lenovo



---

## Chapter 3. Web resources

The following Web sites provide the resources for understanding, using, and troubleshooting Lenovo XClarity Integrator for Microsoft Windows Admin Center.

### Lenovo XClarity Systems Management home page

- <https://www.lenovo.com/us/en/data-center/software/management/>

### Lenovo XClarity Integrator for Windows Admin Center home page

- <https://support.lenovo.com/us/en/solutions/ht507549>

### Lenovo XClarity Integrator for Windows Admin Center User Guide

- [https://sysmgmt.lenovofiles.com/help/topic/com.lenovo.lxci\\_wac.doc/wac\\_welcome.html](https://sysmgmt.lenovofiles.com/help/topic/com.lenovo.lxci_wac.doc/wac_welcome.html)

### Lenovo XClarity Integrator extension page in the Microsoft documentation center

- <https://docs.microsoft.com/en-us/windows-server/manage/windows-admin-center/extend/case-studies/lenovo>



---

## Appendix A. Notices

Lenovo may not offer the products, services, or features discussed in this document in all countries. Consult your local Lenovo representative for information on the products and services currently available in your area.

Any reference to a Lenovo product, program, or service is not intended to state or imply that only that Lenovo product, program, or service may be used. Any functionally equivalent product, program, or service that does not infringe any Lenovo intellectual property right may be used instead. However, it is the user's responsibility to evaluate and verify the operation of any other product, program, or service.

Lenovo may have patents or pending patent applications covering subject matter described in this document. The furnishing of this document is not an offer and does not provide a license under any patents or patent applications. You can send inquiries in writing to the following:

*Lenovo (United States), Inc.  
8001 Development Drive  
Morrisville, NC 27560  
U.S.A.  
Attention: Lenovo Director of Licensing*

LENOVO PROVIDES THIS PUBLICATION "AS IS" WITHOUT WARRANTY OF ANY KIND, EITHER EXPRESS OR IMPLIED, INCLUDING, BUT NOT LIMITED TO, THE IMPLIED WARRANTIES OF NON-INFRINGEMENT, MERCHANTABILITY OR FITNESS FOR A PARTICULAR PURPOSE. Some jurisdictions do not allow disclaimer of express or implied warranties in certain transactions, therefore, this statement may not apply to you.

This information could include technical inaccuracies or typographical errors. Changes are periodically made to the information herein; these changes will be incorporated in new editions of the publication. Lenovo may make improvements and/or changes in the product(s) and/or the program(s) described in this publication at any time without notice.

The products described in this document are not intended for use in implantation or other life support applications where malfunction may result in injury or death to persons. The information contained in this document does not affect or change Lenovo product specifications or warranties. Nothing in this document shall operate as an express or implied license or indemnity under the intellectual property rights of Lenovo or third parties. All information contained in this document was obtained in specific environments and is presented as an illustration. The result obtained in other operating environments may vary.

Lenovo may use or distribute any of the information you supply in any way it believes appropriate without incurring any obligation to you.

Any references in this publication to non-Lenovo Web sites are provided for convenience only and do not in any manner serve as an endorsement of those Web sites. The materials at those Web sites are not part of the materials for this Lenovo product, and use of those Web sites is at your own risk.

Any performance data contained herein was determined in a controlled environment. Therefore, the result obtained in other operating environments may vary significantly. Some measurements may have been made on development-level systems and there is no guarantee that these measurements will be the same on generally available systems. Furthermore, some measurements may have been estimated through extrapolation. Actual results may vary. Users of this document should verify the applicable data for their specific environment.

---

## Trademarks

Lenovo, the Lenovo logo, Flex System, System x, and NeXtScale System are trademarks of Lenovo in the United States, other countries, or both.

Intel and Intel Xeon are trademarks of Intel Corporation in the United States, other countries, or both.

Storage Spaces Direct, Internet Explorer, Microsoft, and Windows are trademarks of the Microsoft group of companies.

Linux is a registered trademark of Linus Torvalds.

Other company, product, or service names may be trademarks or service marks of others.

---

## Important notes

Processor speed indicates the internal clock speed of the microprocessor; other factors also affect application performance.

When referring to processor storage, real and virtual storage, or channel volume, KB stands for 1 024 bytes, MB stands for 1 048 576 bytes, and GB stands for 1 073 741 824 bytes.

When referring to hard disk drive capacity or communications volume, MB stands for 1 000 000 bytes, and GB stands for 1 000 000 000 bytes. Total user-accessible capacity can vary depending on operating environments.

Lenovo makes no representations or warranties with respect to non-Lenovo products. Support (if any) for the non-Lenovo products is provided by the third party, not Lenovo.

Some software might differ from its retail version (if available) and might not include user manuals or all program functionality.





**Lenovo**