
ThinkSystem Friction 2-Post Screw-in Rail Kit

Read guidelines first

Review the documentation that comes with the rack for safety and cabling information. Before you install the server in a rack, read the following guidelines:

- Some illustrations might differ from your server. All types of server are removed and installed in a similar manner.
- See the *Maintenance Manual* for the maximum room air temperature.
- Do not block any air vents, usually 15 cm (6 inches) of air space provides proper airflow.
- Plan the device installation starting from the bottom of the rack.
- Install the heaviest device in the bottom of the rack.
- Do not extend more than one device out of the rack at the same time.
- Do not place any objects on the top of the rack-mounted devices.
- Connect all power cords to properly wired and grounded electrical outlets.
- Do not overload the power outlet when installing multiple devices in the rack.
- The maximum width of the mounting flange is 225.6 mm (8.9 inches).

Safety notice



CAUTION:
Make sure the rails support your server model and use safe practices when lifting



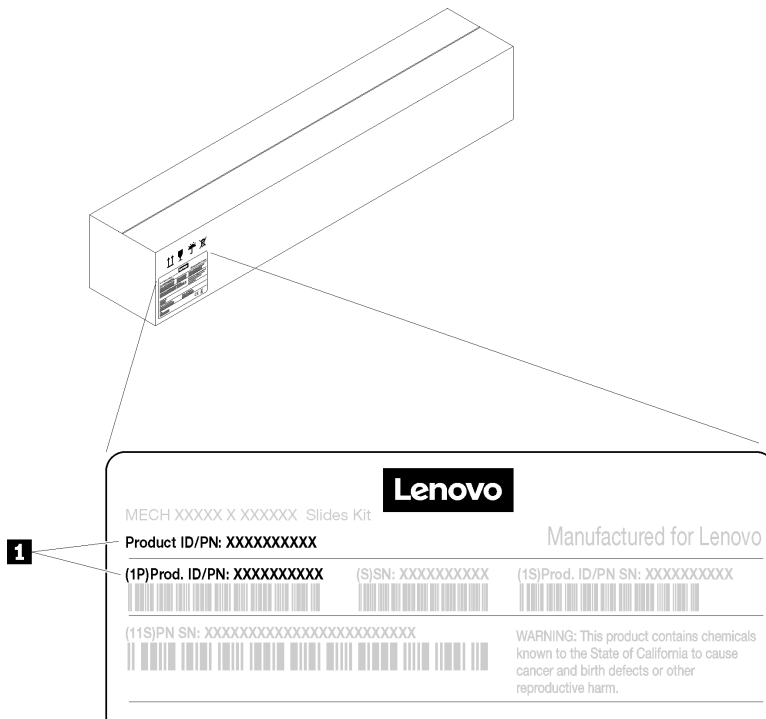
Rail Support Matrix

For the detailed information about the rail support, see the following website: <https://en.resources.lenovo.com/brochures/thinksystem-rail-support-matrix>



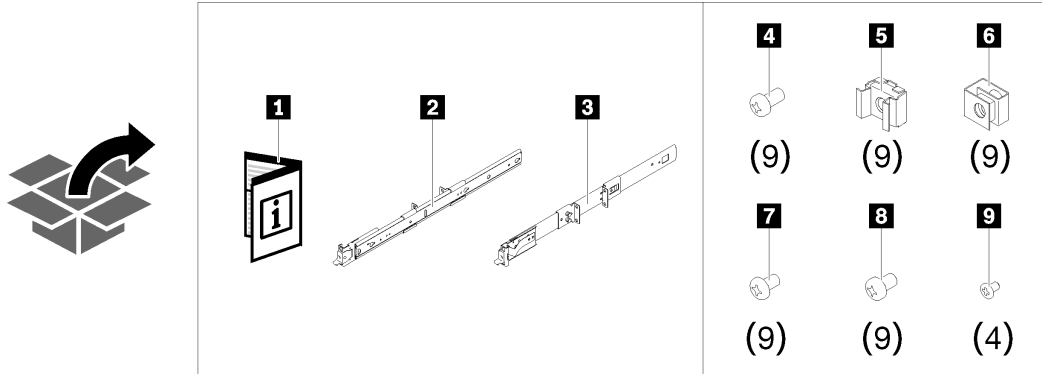
Part number

Find the rail part number on the label as shown, use the part number to identify your rail model in the Rail Support Matrix above.



1 Part number (10 digits)

The rail package contains the following items:



1 Document

2 Left rail

3 Right rail

4 Nine M5 screws (for square-hole and round-hole rack)

5 Nine cage nuts (for square-hole rack)

6 Nine clip nuts (for round-hole rack)

7 Nine 10-32 screws (for threaded rack)

8 Nine 12-24 screws (for threaded rack)

9 Four screws

Installation steps

1. Remove Inner Rails

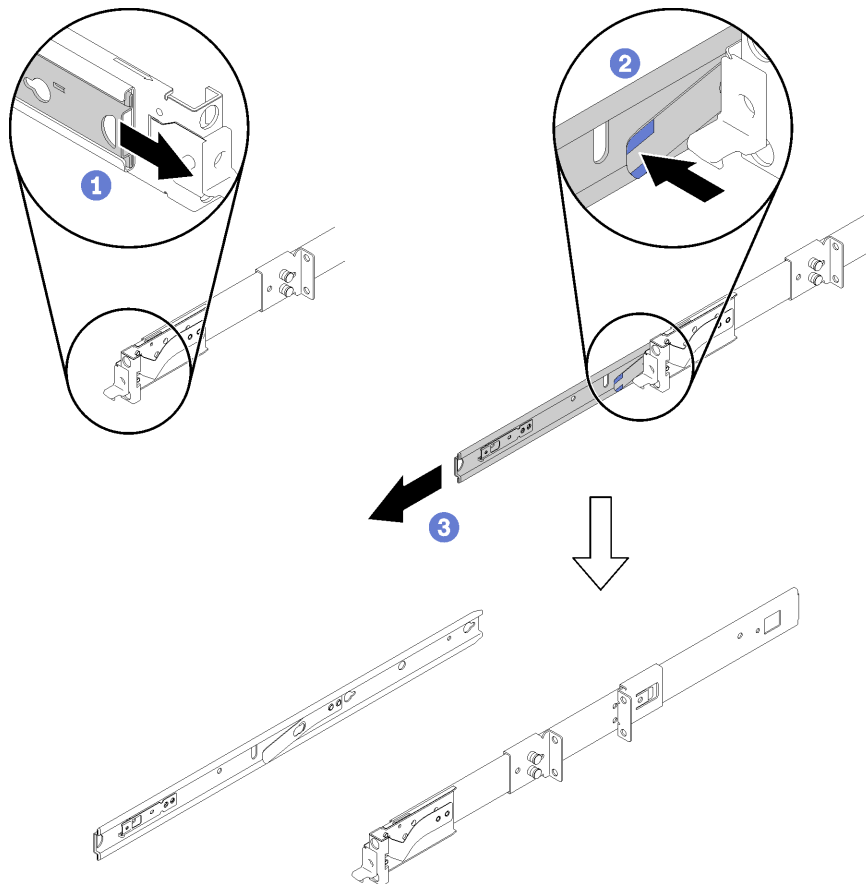
Note: The graphic shown below is the right rail.

Step 1. Pull the inner rail outward until you see the release latch.

Step 2. Press the release latch.

Step 3. Pull out the inner rail away from the outer rail.

Step 4. Repeat step 1-3 on the left rail.



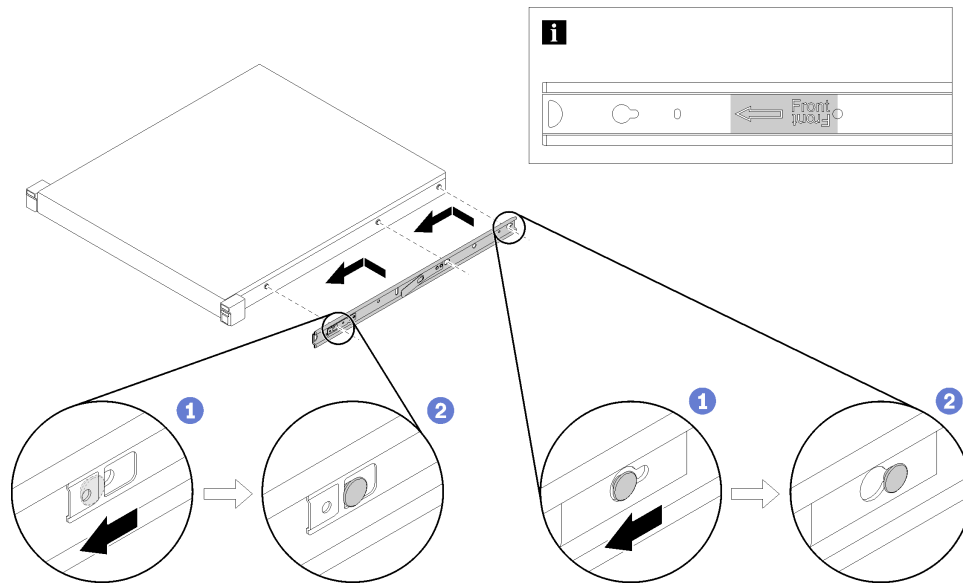
2. Install Inner Rails on System

Note: The graphic shown below is the right rail.

Step 1. Align the mounting holes in the inner rail with the corresponding rail mounting pins on the side of the server.

Step 2. Push the inner rail as shown until the mounting pins on the server lock into place with the inner rail.

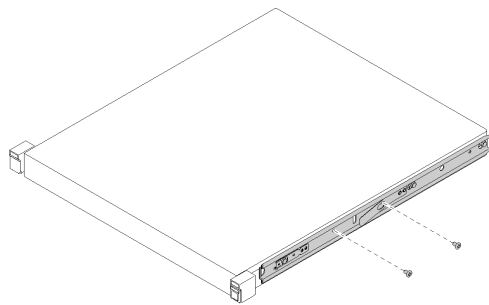
Step 3. Repeat step 1-2 on the left rail.



Notes:

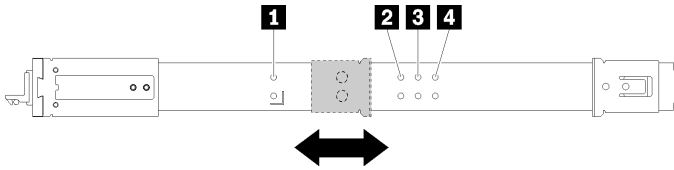
- Make sure the stamp "Front" always face toward the front when assembling the inner rail to the server or to the slide-rail assembly.
- The number of the rail mounting pins on the side of the server might be different from the illustration depending on the server model.

Step 4. Insert and fasten the four screws on the left and right rails if needed (depending on the server model).



3. Adjust the Position of the Sliding Brackets (optional)

Bracket position for different server depth:



1 Server depth: 480 mm-560 mm (default position)

2 Server depth: 675 mm-752 mm

3 Server depth: 700 mm-779 mm

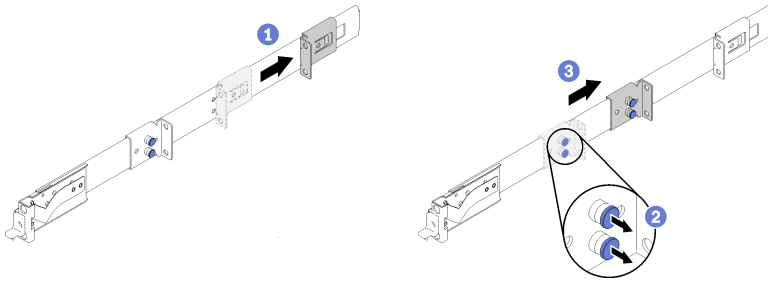
4 Server depth: 725 mm-805 mm

Note: Based on the server dimension, you may need to adjust the bracket to make sure the center of gravity of the server is within the rails. The steps are listed as below.

Step 1. Move rear sliding bracket to the back as shown.

Step 2. Pull the pins of front sliding bracket.

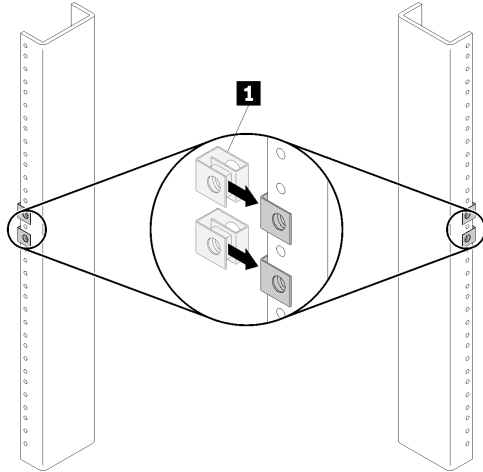
Step 3. Slide the front bracket so the pins lock into the corresponding holes on the rails.



4. Install Nuts to Rack

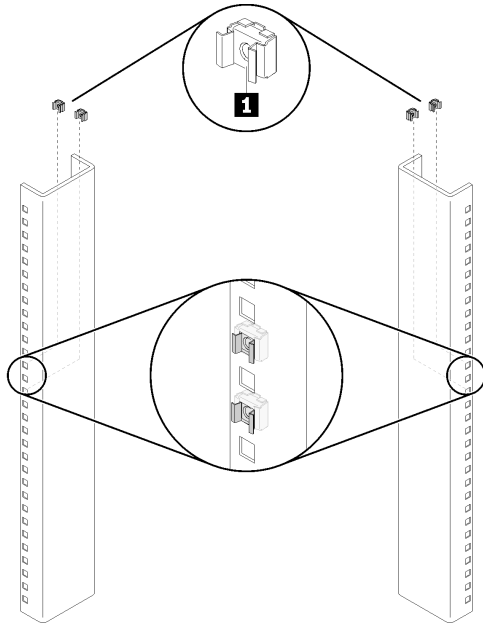
Note: For threaded rack, skip to the next page for Step 5.

- For round-hole rack, install clip nuts to the rack as shown



1 Clip nut

- For square-hole rack, install cage nuts to the rack as shown



1 Cage nut

5. Install Rails to Rack

Notes: The graphic shown below is the right rail.

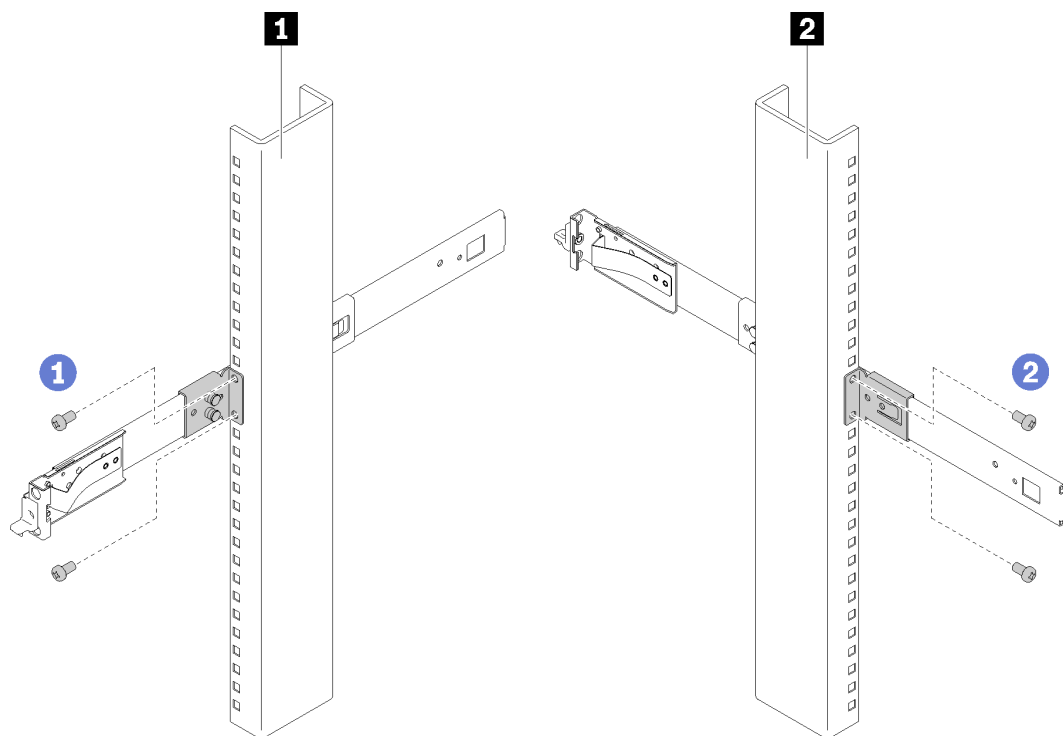
Use the same method to install the rails to all types of racks:

- For square-hole rack, use M5 screws and cage nuts
- For round-hole rack, use M5 screws and clip nuts
- For threaded rack, use only 10-32 or 12-24 screws (depending on the rack)

Step 1. Align the rail with the rack and install the screws to secure the front side of the rail.

Step 2. Adjust the rear sliding bracket against the rack; then, install the screws to secure the rail.

Step 3. Repeat step 1-2 on the left rail.



1 Screws installation on the front side of the rack

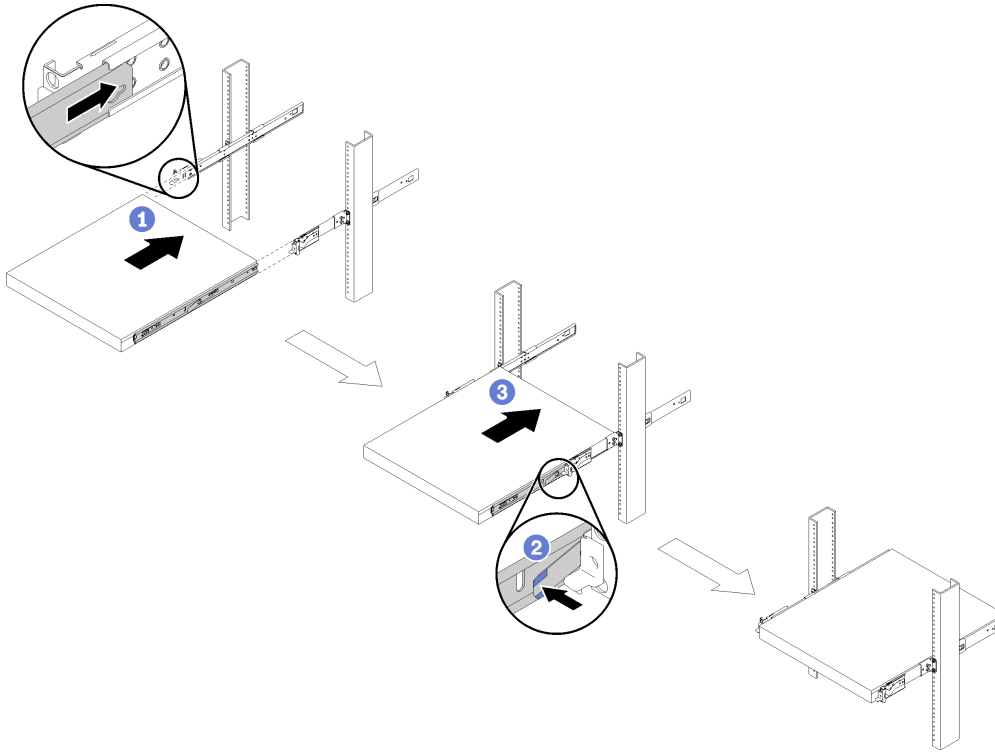
2 Screws installation on the rear side of the rack

6. Slide System into Rails in Rack

Step 1. Carefully lift the server and align the server with the slide rails. Position the server as shown and push the server into the rack.

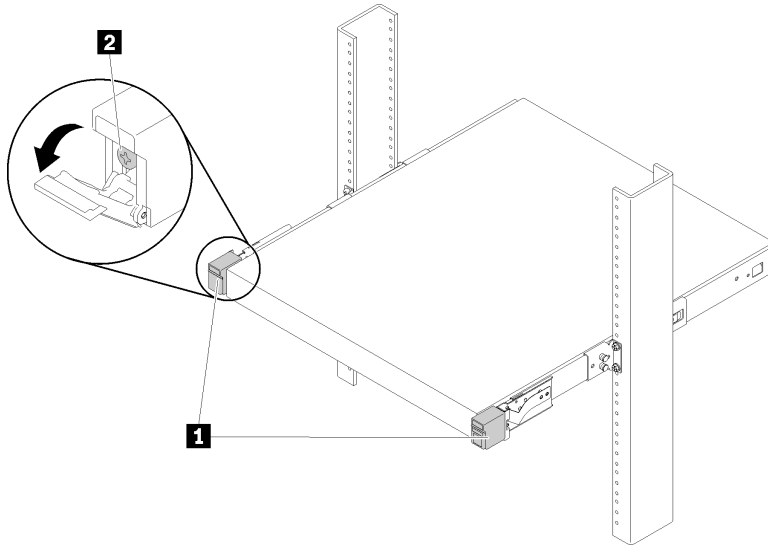
Step 2. Press the release latches.

Step 3. Push the server all the way into the rack until the server locks into place with a click.



7. Tighten Front Screws (optional)

Secure the server before you move the rack or place the rack in a vibration-prone area. Open the rack release latches and tighten the screws to firmly secure the system.



1 Rack release latches

2 Front Screw

Removal steps

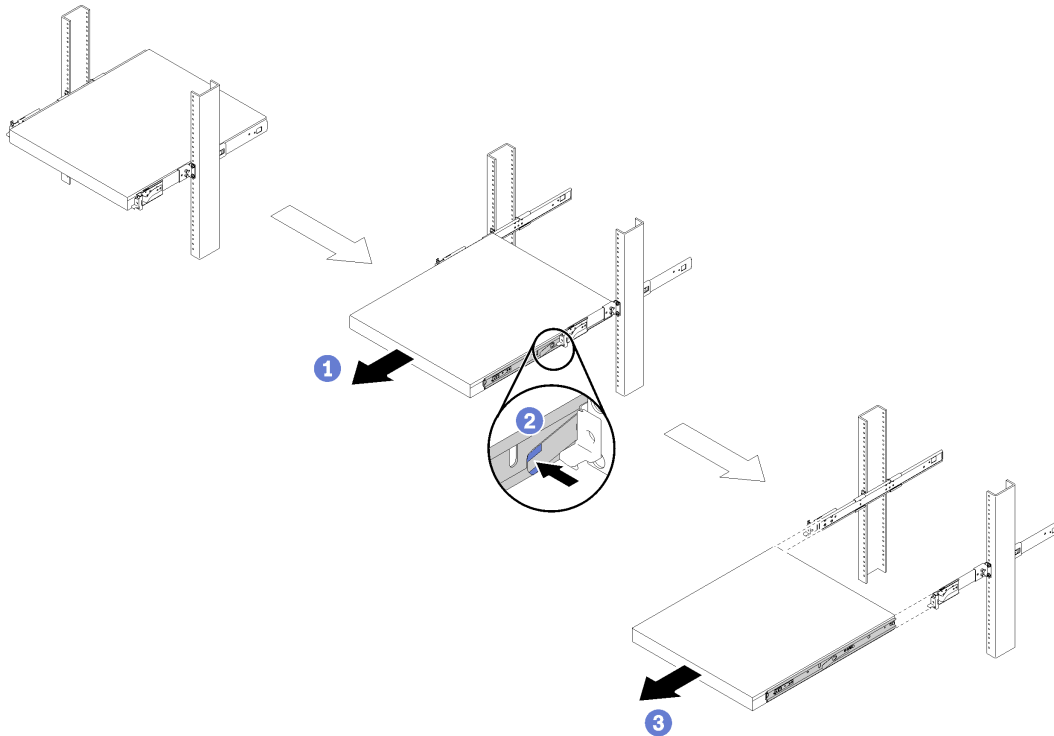
Remove System from Rack

Note: Make sure you have enough help and use safe practices when performing Step 3 .

Step 1. Disconnect all cables from the rear of the server. Open the rack release latch in the front of the server and loosen the front screws; then, slowly slide the server out until it stops.

Step 2. Press the release latches.

Step 3. Carefully pull the server out of the rack.



First Edition (July 2019)

© Copyright Lenovo 2019.

LENOVO and THINKSYSTEM are trademarks of Lenovo. All other trademarks are the property of their respective owners.

LIMITED AND RESTRICTED RIGHTS NOTICE: If data or software is delivered pursuant to a General Services Administration (GSA) contract, use, reproduction, or disclosure is subject to restrictions set forth in Contract No. GS-35F-05925.

Printed in China

(1P) P/N: SP47A46592

