



ThinkSystem SR680a V4 System Configuration Guide



Machine Types: 7DMK and 7DPA

Note

Before using this information and the product it supports, be sure to read and understand the safety information and the safety instructions, which are available at:

https://pubs.lenovo.com/safety_documentation/

In addition, be sure that you are familiar with the terms and conditions of the Lenovo warranty for your server, which can be found at:

<http://datacentersupport.lenovo.com/warrantylookup>

First Edition (December 2025)

© Copyright Lenovo 2025.

LIMITED AND RESTRICTED RIGHTS NOTICE: If data or software is delivered pursuant to a General Services Administration (GSA) contract, use, reproduction, or disclosure is subject to restrictions set forth in Contract No. GS-35F-05925.

Contents

| | | | |
|--|-------------|---|-----------|
| Contents | i | Identify the server and access the Lenovo XClarity Controller | 39 |
| Safety | .iii | Server setup checklist | 41 |
| Safety inspection checklist | iv | | |
| Chapter 1. Introduction | 1 | Chapter 5. System configuration | 43 |
| Features. | 1 | Set the network connection for the Lenovo XClarity Controller | 43 |
| Tech Tips | 2 | Set USB port for Lenovo XClarity Controller connection. | 43 |
| Security advisories | 3 | Update the firmware | 44 |
| Specifications | 3 | Configure the firmware | 48 |
| Technical specifications. | 3 | Memory module configuration | 49 |
| Mechanical specifications | 6 | Enable Software Guard Extensions (SGX). | 49 |
| Environmental specifications | 6 | RAID configuration | 49 |
| Management options. | 8 | Deploy the operating system. | 50 |
| Chapter 2. Server components | 13 | Back up the server configuration | 51 |
| Front view | 13 | | |
| Rear view | 17 | Appendix A. Getting help and technical assistance | 53 |
| Top view | 17 | Before you call | 53 |
| System-board layout. | 18 | Collecting service data | 54 |
| System board connectors | 18 | Contacting Support | 55 |
| System-board switches | 19 | | |
| System I/O board connectors | 21 | Appendix B. Documents and supports | 57 |
| System LEDs and diagnostics display | 21 | Documents download | 57 |
| Troubleshooting by system LEDs and diagnostics display | 21 | Support websites | 57 |
| Front LEDs | 21 | | |
| Power supply LEDs | 24 | Appendix C. Notices. | 59 |
| Integrated diagnostics panel | 25 | Trademarks | 60 |
| Chapter 3. Parts list | 33 | Important notes | 60 |
| Power cords | 36 | Electronic emission notices | 60 |
| Chapter 4. Unboxing and setup | 39 | Taiwan Region BSMI RoHS declaration | 61 |
| Server package contents | 39 | Taiwan Region import and export contact information | 61 |

Safety

Before installing this product, read the Safety Information.

قبل تركيب هذا المنتج، يجب قراءة الملاحظات الأمنية

Antes de instalar este produto, leia as Informações de Segurança.

在安裝本产品之前，请仔细阅读 Safety Information（安全信息）。

安裝本產品之前，請先閱讀「安全資訊」。

Prije instalacije ovog produkta obavezno pročitajte Sigurnosne Upute.

Před instalací tohoto produktu si přečtěte příručku bezpečnostních instrukcí.

Læs sikkerhedsforskrifterne, før du installerer dette produkt.

Lees voordat u dit product installeert eerst de veiligheidsvoorschriften.

Ennen kuin asennat tämän tuotteen, lue turvaohjeet kohdasta Safety Information.

Avant d'installer ce produit, lisez les consignes de sécurité.

Vor der Installation dieses Produkts die Sicherheitshinweise lesen.

Πριν εγκαταστήσετε το προϊόν αυτό, διαβάστε τις πληροφορίες ασφάλειας (safety information).

לפני שתתקינו מוצר זה, קראו את הוראות הבטיחות.

A termék telepítése előtt olvassa el a Biztonsági előírásokat!

Prima di installare questo prodotto, leggere le Informazioni sulla Sicurezza.

製品の設置の前に、安全情報をお読みください。

본 제품을 설치하기 전에 안전 정보를 읽으십시오.

Пред да се инсталира овој продукт, прочитајте информацијата за безбедност.



Les sikkerhetsinformasjonen (Safety Information) før du installerer dette produktet.

Przed zainstalowaniem tego produktu, należy zapoznać się z książką "Informacje dotyczące bezpieczeństwa" (Safety Information).

Antes de instalar este produto, leia as Informações sobre Segurança.

Перед установкой продукта прочтите инструкции по технике безопасности.

Pred inštaláciou tohto zariadenia si pečítajte Bezpečnostné predpisy.

Pred namestitvijo tega proizvoda preberite Varnostne informacije.

Antes de instalar este producto, lea la información de seguridad.

Läs säkerhetsinformationen innan du installerar den här produkten.

ཐོན་ཐུང་འདི་བདེ་སྤྱད་མ་བྱས་གོང་། སྐྱར་གྱི་ཡིད་གཟབ་
བྱ་འདྲ་མིན་ཡིད་པའི་འོད་མེར་བཟང་དགོས།

Bu ürünü kurmadan önce güvenlik bilgilerini okuyun.

مەزكۇر مەھسۇلاتنى ئورنىتىشتىن بۇرۇن بىخەتەرلىك ئۇچۇرلىرىنى ئوقۇپ چىقىڭ.

Youq mwngz yungh canjbinj neix gaxgonq, itdingh aeu doeg aen
canjbinj soengq cungj vahgangj ancien siusik.

Safety inspection checklist

Use the information in this section to identify potentially unsafe conditions with your server. As each machine was designed and built, required safety items were installed to protect users and service technicians from injury.

Note: The product is not suitable for use at visual display workplaces according to §2 of the Workplace Regulations.

Note: The set-up of the server is made in the server room only.

CAUTION:

This equipment must be serviced by trained personnel, as defined by the IEC 62368-1, the standard for Safety of Electronic Equipment within the Field of Audio/Video, Information Technology and Communication Technology. Lenovo assumes you are qualified in the servicing of equipment and trained in recognizing hazards energy levels in products. Equipment must be installed in a restricted access location and access to the equipment is controlled by the authority responsible for the location.

Important: Electrical grounding of the server is required for operator safety and correct system function. Proper grounding of the electrical outlet can be verified by a certified electrician.

Use the following checklist to verify that there are no potentially unsafe conditions:

1. Make sure that the power is off and the power cord is disconnected.
2. Check the power cord.
 - Make sure that the third-wire ground connector is in good condition. Use a meter to measure third-wire ground continuity for 0.1 ohm or less between the external ground pin and the frame ground.
 - Make sure that the power cord is the correct type.

To view the power cords that are available for the server:

- a. Go to:

<http://dcsc.lenovo.com/#/>

- b. Click **Preconfigured Model** or **Configure to order**.
 - c. Enter the machine type and model for your server to display the configurator page.
 - d. Click **Power → Power Cables** to see all line cords.
- Make sure that the insulation is not frayed or worn.
3. Check for any obvious non-Lenovo alterations. Use good judgment as to the safety of any non-Lenovo alterations.
 4. Check inside the server for any obvious unsafe conditions, such as metal filings, contamination, water or other liquid, or signs of fire or smoke damage.
 5. Check for worn, frayed, or pinched cables.
 6. Make sure that the power-supply cover fasteners (screws or rivets) have not been removed or tampered with.
 7. The design of the electrical distribution system must take into consideration the total grounding leakage current from all power supplies in the server.

CAUTION:



High touch current. Connect to earth before connecting to supply.

8. Use the PDUs (power distribution units) with pluggable equipment type B to distribute electrical power to servers.

Chapter 1. Introduction

The ThinkSystem SR680a V4 server (Types 7DMK and 7DPA) is a powerful 8U server that features two 6th Gen Intel® Xeon® Scalable processors and eight high-performance GPUs. This air-cooled server is the ultimate Generative AI platform, featuring advanced GPU-to-GPU communication and high-speed PCIe 5.0 connectivity between processors and GPUs, as well as processors and networking devices. Processor-to-processor communication is supported via Intel UPI (Ultra Path Interconnect) for high-bandwidth, low-latency data transfer. It is designed to accelerate AI workloads including modeling, training, simulation, rendering, financial tech, and scientific research.

Figure 1. ThinkSystem SR680a V4



Features

Performance, ease of use, reliability, and expansion capabilities were key considerations in the design of your server. These design features make it possible for you to customize the system hardware to meet your needs today and provide flexible expansion capabilities for the future.

Your server implements the following features and technologies:

- **Lenovo XClarity Controller (XCC)**

The Lenovo XClarity Controller is the common management controller for Lenovo ThinkSystem server hardware. The Lenovo XClarity Controller consolidates multiple management functions in a single chip on the system I/O board. Some of the features that are unique to the Lenovo XClarity Controller are enhanced performance, higher-resolution remote video, and expanded security options.

The server supports Lenovo XClarity Controller 3 (XCC3). For additional information about Lenovo XClarity Controller 3 (XCC3), refer to <https://pubs.lenovo.com/lxcc-overview/>.

- **UEFI-compliant server firmware**

Lenovo ThinkSystem firmware is Unified Extensible Firmware Interface (UEFI) compliant. UEFI replaces BIOS and defines a standard interface between the operating system, platform firmware, and external devices.

Lenovo ThinkSystem servers are capable of booting UEFI-compliant operating systems and UEFI-compliant adapters.

Note: The server does not support Disk Operating System (DOS).

- **Large system-memory capacity**

The server supports registered DIMMs (RDIMMs). For more information about the specific types and maximum amount of memory, see [“Technical specifications” on page 3](#).

- **Large data-storage capacity and hot-swap capability**

With the hot-swap feature, you can add, remove, or replace solid-state drives without turning off the server.

Storage capacity is different depending on server model. See [“Technical specifications” on page 3](#) for more information.

- **Lightpath Diagnostics**

Lightpath Diagnostics provides LEDs to help you diagnose problems. For more information about the Lightpath Diagnostics, see [“Troubleshooting by system LEDs and diagnostics display” on page 21](#).

- **Mobile access to Lenovo Service Information website**

The server provides a QR code on the system service label, which is on the front fan cage, that you can scan using a QR code reader and scanner with a mobile device to get quick access to the Lenovo Service Information website. The Lenovo Service Information website provides additional information for parts installation, replacement videos, and error codes for server support.

- **Active Energy Manager**

Lenovo XClarity Energy Manager is a power and temperature management solution for data centers. You can monitor and manage the power consumption and temperature of Converged, NeXtScale, System x, and ThinkServer servers, and improve energy efficiency using Lenovo XClarity Energy Manager.

- **Redundant networking connection**

The Lenovo XClarity Controller supports redundant Ethernet connections using two network controllers — one for the dedicated management port and one for the shared port. When failover occurs between these ports, network access remains available. For consistent connectivity with DHCP, it's recommended to use the host name instead of the IP address or configure a static IP.

- **Redundant cooling**

The redundant cooling by the fans in the server enables continued operation if one of the fans fails.

Tech Tips

Lenovo continually updates the support website with the latest tips and techniques that you can use to solve issues that your server might encounter. These Tech Tips (also called retain tips or service bulletins) provide procedures to work around issues or solve problems related to the operation of your server.

To find the Tech Tips available for your server:

1. Go to <http://datacentersupport.lenovo.com> and navigate to the support page for your server.
2. Click on **How To's** from the navigation pane.
3. Click **Article Type → Solution** from the drop-down menu.

Follow the on-screen instructions to choose the category for the problem that you are having.

Security advisories

Lenovo is committed to developing products and services that adhere to the highest security standards in order to protect our customers and their data. When potential vulnerabilities are reported, it is the responsibility of the Lenovo Product Security Incident Response Team (PSIRT) to investigate and provide information to our customers so they may put mitigation plans in place as we work toward providing solutions.

The list of current advisories is available at the following site:

https://datacentersupport.lenovo.com/product_security/home

Specifications

Summary of the features and specifications of the server. Depending on the model, some features might not be available, or some specifications might not apply.

Refer to the below table for specifications categories and the content of each category.

| Specification category | Technical specifications | Mechanical specifications | Environmental specifications |
|------------------------|--|--|---|
| Content | <ul style="list-style-type: none">• Processor• Memory• M.2 Drive• Storage expansion• Expansion slots• Graphics processing unit (GPU)• Integrated functions and I/O connectors• Network• RAID• System fan• Electrical input• Minimal configuration for debugging• Operating systems | <ul style="list-style-type: none">• Dimension• Weight | <ul style="list-style-type: none">• Environmental |

Technical specifications

Summary of the technical specifications of server. Depending on the model, some features might not be available, or some specifications might not apply.

Processor

Supports multi-core Intel Xeon processors, with integrated memory controller and Intel Mesh UPI (Ultra Path Interconnect) topology.

- Up to two Intel Xeon 6 processors with P-cores with the new LGA 4710 sockets
- Up to 86 cores per socket
- Up to 4 UPI links between processors at up to 24 GT/s
- Thermal Design Power (TDP): up to 350 watts

For a list of supported processors, see: <https://serverproven.lenovo.com>.

Memory

See “Memory module installation rules and order” in *User Guide* or *Hardware Maintenance Guide* for detailed information about memory configuration and setup.

- Memory module type:
 - TruDDR5 6400 MHz RDIMM: 64 GB (2Rx4), 96 GB (2Rx4), and 128 GB (2Rx4)
- Speed:

Note: Operating speed depends on processor model and UEFI settings.

- 6400 MT/s for 1 DIMM per channel
- 5200 MT/s for 2 DIMMs per channel

- Capacity
 - Minimum: 2 TB
 - Maximum: 4 TB
- Slots: 16 DIMM slots per processor, 32 DIMM slots in total

For a list of supported memory modules, see: <https://serverproven.lenovo.com>.

M.2 Drive

Up to two hot-swap M.2 NVMe drives

For a list of supported M.2 drives, see: <https://serverproven.lenovo.com>.

Storage expansion

Up to eight 2.5-inch hot-swap NVMe drives

For a list of supported drives, see: <https://serverproven.lenovo.com>.

Expansion slots

- One OCP slot with PCIe Gen5 x16 host interface (slot 1)
- Four PCIe Gen5 x16 FHHL PCIe slots (slots 2 to 5)

For more information, see “Front view” on page 13.

Graphics processing unit (GPU)

Eight NVIDIA B300 1100W SXM6 GPUs with 270GB HBM3e memory per GPU

Integrated functions and I/O connectors

- Lenovo XClarity Controller (XCC), which provides service processor control and monitoring functions, video controller, and remote keyboard, video, mouse, and remote drive capabilities.
 - The server supports Lenovo XClarity Controller 3 (XCC3). For additional information about Lenovo XClarity Controller 3 (XCC3), refer to <https://pubs.lenovo.com/lxcc-overview/>.
 - Front connectors:
 - Three USB 3.2 Gen 1 (5 Gbps) connectors
 - One USB 3.2 Gen 1 (5 Gbps) connector with Lenovo XClarity Controller management
 - One XCC system management port (10/100/1000 Mbps RJ-45) to connect to a systems-management network. This RJ-45 connector is dedicated to the Lenovo XClarity Controller functions.
 - One VGA port
- Note:** The maximum video resolution is 1920 x 1200 at 60 Hz.
- Integrated diagnostics panel
 - Power button and power LED (green)
 - Network Activity LED (green)
 - System ID button/LED (blue)
 - System Error LED (yellow)
 - Eight 800 Gb/s OSFP connectors

Network

- One XCC system management port (10/100/1000 Mbps RJ-45)
- One OCP module, which provides two or four Ethernet connectors for network support
- Eight 800 Gb/s OSFP connectors, which allows GPU direct connections for network support

RAID

Hardware RAID 0, 1

- ThinkSystem M.2 RAID B540p-2HS SATA/NVMe Enablement Kit

System fan

- Six front dual-rotor fans: 60 mm x 60 mm x 56 mm
- Fifteen rear dual-rotor fans: 80 mm x 80 mm x 56 mm

Electrical input

Following is the list of supported type:

- CFFv5 230V/115V 3200-watt Titanium

Important: Power supplies and redundant power supplies in the server must be with the same power rating, wattage or level.

Minimal configuration for debugging

- Two processors
- Minimum memory capacity – 2 or 3 TB of memory (sixteen 128 GB modules or thirty-two 64 GB/96 GB modules)
- Six power supplies
- One M.2 drive (If OS is needed for debugging)
- Twenty-one system fans
- One front PCIe Ethernet Adapter (If network is required)

Operating systems

Supported and certified operating system:

- Canonical Ubuntu
- Red Hat Enterprise Linux

References:

- Complete list of available operating systems: <https://lenovopress.lenovo.com/osig>.
- OS deployment instructions, see “Deploy the operating system” on page 50.

Mechanical specifications

Summary of the mechanical specifications of server. Depending on the model, some features might not be available, or some specifications might not apply.

Dimension

- Height: 351 mm (13.82 inches)
- Width (without EIA flange): 483 mm (19.01 inches)
- Width (with EIA flange): 447 mm (18 inches)
- Depth (without EIA flange and power supply units): 888.2 mm (34.97 inches)

Weight

Approximately 124.74 kg (275 lbs), depending on the configuration

Environmental specifications

Summary of the environmental specifications of server. Depending on the model, some features might not be available, or some specifications might not apply.

Environment

ThinkSystem SR680a V4 complies with ASHRAE Class A2 specifications with certain thermal restrictions. System performance may be impacted when operating temperature is out of permitted conditions.

- Air temperature:
 - Operating
 - ASHARE Class A2: 10°C to 35°C (50°F to 95°F); the maximum ambient temperature decreases by 1°C for every 300 m (984 ft) increase in altitude above 900 m (2,953 ft).
 - Server off: 5°C to 45°C (41°F to 113°F)
 - Shipment/storage: -20°C to 60°C (-4°F to 140°F)
- Maximum altitude: 3,050 m (10,000 ft)
- Relative Humidity (non-condensing):
 - Operating
 - ASHRAE Class A2: 8% to 80%; maximum dew point: 21°C (70°F)
 - Shipment/storage: 8% to 90%
- Particulate contamination

Attention: Airborne particulates and reactive gases acting alone or in combination with other environmental factors such as humidity or temperature might pose a risk to the server. For information about the limits for particulates and gases, see “Particulate contamination” on page 7.

Note: The server is designed for standard data center environment and recommended to be placed in industrial data center.

Particulate contamination

Attention: Airborne particulates (including metal flakes or particles) and reactive gases acting alone or in combination with other environmental factors such as humidity or temperature might pose a risk to the device that is described in this document.

Risks that are posed by the presence of excessive particulate levels or concentrations of harmful gases include damage that might cause the device to malfunction or cease functioning altogether. This specification sets forth limits for particulates and gases that are intended to avoid such damage. The limits must not be viewed or used as definitive limits, because numerous other factors, such as temperature or moisture content of the air, can influence the impact of particulates or environmental corrosives and gaseous contaminant transfer. In the absence of specific limits that are set forth in this document, you must implement practices that maintain particulate and gas levels that are consistent with the protection of human health and safety. If Lenovo determines that the levels of particulates or gases in your environment have caused damage to the device, Lenovo may condition provision of repair or replacement of devices or parts on implementation of appropriate remedial measures to mitigate such environmental contamination. Implementation of such remedial measures is a customer responsibility.

Table 1. Limits for particulates and gases

| Contaminant | Limits |
|--|--|
| Reactive gases | <p>Severity level G1 as per ANSI/ISA 71.04-1985¹:</p> <ul style="list-style-type: none">• The copper reactivity level shall be less than 200 Angstroms per month ($\text{\AA}/\text{month} \approx 0.0035 \mu\text{g}/\text{cm}^2\text{-hour weight gain}$).²• The silver reactivity level shall be less than 200 Angstroms per month ($\text{\AA}/\text{month} \approx 0.0035 \mu\text{g}/\text{cm}^2\text{-hour weight gain}$).³• The reactive monitoring of gaseous corrosivity must be conducted approximately 5 cm (2 in.) in front of the rack on the air inlet side at one-quarter and three-quarter frame height off the floor or where the air velocity is much higher. |
| Airborne particulates | <p>Data centers must meet the cleanliness level of ISO 14644-1 class 8.</p> <p>For data centers without airside economizer, the ISO 14644-1 class 8 cleanliness might be met by choosing one of the following filtration methods:</p> <ul style="list-style-type: none">• The room air might be continuously filtered with MERV 8 filters.• Air entering a data center might be filtered with MERV 11 or preferably MERV 13 filters. <p>For data centers with airside economizers, the choice of filters to achieve ISO class 8 cleanliness depends on the specific conditions present at that data center.</p> <ul style="list-style-type: none">• The deliquescent relative humidity of the particulate contamination should be more than 60% RH.⁴• Data centers must be free of zinc whiskers.⁵ |
| <p>¹ ANSI/ISA-71.04-1985. <i>Environmental conditions for process measurement and control systems: Airborne contaminants</i>. Instrument Society of America, Research Triangle Park, North Carolina, U.S.A.</p> <p>² The derivation of the equivalence between the rate of copper corrosion growth in the thickness of the corrosion product in $\text{\AA}/\text{month}$ and the rate of weight gain assumes that Cu_2S and Cu_2O grow in equal proportions.</p> <p>³ The derivation of the equivalence between the rate of silver corrosion growth in the thickness of the corrosion product in $\text{\AA}/\text{month}$ and the rate of weight gain assumes that Ag_2S is the only corrosion product.</p> <p>⁴ The deliquescent relative humidity of particulate contamination is the relative humidity at which the dust absorbs enough water to become wet and promote ionic conduction.</p> <p>⁵ Surface debris is randomly collected from 10 areas of the data center on a 1.5 cm diameter disk of sticky electrically conductive tape on a metal stub. If examination of the sticky tape in a scanning electron microscope reveals no zinc whiskers, the data center is considered free of zinc whiskers.</p> | |

Management options

The XClarity portfolio and other system management options described in this section are available to help you manage the servers more conveniently and efficiently.

Overview

| Options | Description |
|-------------------------------|---|
| Lenovo XClarity Controller | <p>Baseboard management controller (BMC)</p> <p>Consolidates the service processor functionality, Super I/O, video controller, and remote presence capabilities into a single chip on the system I/O board.</p> <p>Interface</p> <ul style="list-style-type: none">• CLI application• Web GUI interface• Mobile application• Redfish API <p>Usage and downloads</p> <p>https://pubs.lenovo.com/lxcc-overview/</p> |
| Lenovo XCC Logger Utility | <p>Application that reports the XCC events to local OS system log.</p> <p>Interface</p> <ul style="list-style-type: none">• CLI application <p>Usage and downloads</p> <ul style="list-style-type: none">• https://pubs.lenovo.com/lxcc-logger-linux/• https://pubs.lenovo.com/lxcc-logger-windows/ |
| Lenovo XClarity Administrator | <p>Centralized interface for multi-server management.</p> <p>Interface</p> <ul style="list-style-type: none">• Web GUI interface• Mobile application• REST API <p>Usage and downloads</p> <p>https://pubs.lenovo.com/lxca/</p> |

| Options | Description |
|--------------------------------------|---|
| Lenovo XClarity Essentials toolset | <p>Portable and light toolset for server configuration, data collection, and firmware updates. Suitable both for single-server or multi-server management contexts.</p> <p>Important: To read and configure UEFI and BMC settings, use the latest versions of OneCLI 5.x, BoMC 14.x, and UpdateXpress 5.x.</p> <p>Interface</p> <ul style="list-style-type: none"> • OneCLI: CLI application • Bootable Media Creator: CLI application, GUI application • UpdateXpress: GUI application <p>Usage and downloads</p> <p>https://pubs.lenovo.com/lxce-overview/</p> |
| Lenovo XClarity Provisioning Manager | <p>UEFI-based embedded GUI tool on a single server that can simplify management tasks.</p> <p>Interface</p> <ul style="list-style-type: none"> • Web interface (BMC remote access) • GUI application <p>Usage and downloads</p> <p>https://pubs.lenovo.com/lxpm-overview/</p> <p>Important: Lenovo XClarity Provisioning Manager (LXPM) supported version varies by product. All versions of Lenovo XClarity Provisioning Manager are referred to as Lenovo XClarity Provisioning Manager and LXPM in this document, unless specified otherwise. To see the LXPM version supported by your server, go to https://pubs.lenovo.com/lxpm-overview/.</p> |
| Lenovo XClarity Integrator | <p>Series of applications that integrate the management and monitoring functionalities of the Lenovo physical servers with the software used in a certain deployment infrastructure, such as VMware vCenter, Microsoft Admin Center, or Microsoft System Center while delivering additional workload resiliency.</p> <p>Interface</p> <ul style="list-style-type: none"> • GUI application <p>Usage and downloads</p> <p>https://pubs.lenovo.com/lxci-overview/</p> |

| Options | Description |
|--------------------------------|--|
| Lenovo XClarity Energy Manager | <p>Application that can manage and monitor server power and temperature.</p> <p>Interface</p> <ul style="list-style-type: none"> Web GUI Interface <p>Usage and downloads</p> <p>https://datacentersupport.lenovo.com/solutions/Invo-lxem</p> |
| Lenovo Capacity Planner | <p>Application that supports power consumption planning for a server or rack.</p> <p>Interface</p> <ul style="list-style-type: none"> Web GUI Interface <p>Usage and downloads</p> <p>https://datacentersupport.lenovo.com/solutions/Invo-lcp</p> |

Functions

| Options | | Functions | | | | | | |
|--------------------------------------|------------------------|-------------------|---------------|----------------------|-------------------------------|-------------------------|----------------|----------------|
| | | Multi-system mgmt | OS deployment | System configuration | Firmware updates ¹ | Events/alert monitoring | Inventory/logs | Power mgmt |
| Lenovo XClarity Controller | | | | √ | √ ² | √ | √ ⁴ | |
| Lenovo XCC Logger Utility | | | | | | √ | | |
| Lenovo XClarity Administrator | | √ | √ | √ | √ ² | √ | √ ⁴ | |
| Lenovo XClarity Essentials toolset | OneCLI | √ | | √ | √ ² | √ | √ | |
| | Bootable Media Creator | | | √ | √ ² | | √ ⁴ | |
| | UpdateXpress | | | √ | √ ² | | | |
| Lenovo XClarity Provisioning Manager | | | √ | √ | √ ³ | | √ ⁵ | |
| Lenovo XClarity Integrator | | √ | | √ | √ | √ | √ | √ ⁶ |
| Lenovo XClarity Energy Manager | | √ | | | | √ | | √ |
| Lenovo Capacity Planner | | | | | | | | √ ⁷ |

Notes:

- Most options can be updated through the Lenovo tools. Some options, such as GPU firmware or Omni-Path firmware require the use of supplier tools.
- The server UEFI settings for option ROM must be set to **Auto** or **UEFI** to update firmware using Lenovo XClarity Administrator, Lenovo XClarity Essentials, or Lenovo XClarity Controller.
- Firmware updates are limited to Lenovo XClarity Provisioning Manager, Lenovo XClarity Controller, and UEFI updates only. Firmware updates for optional devices, such as adapters, are not supported.

4. The server UEFI settings for option ROM must be set to **Auto** or **UEFI** for detailed adapter card information, such as model name and firmware levels, to be displayed in Lenovo XClarity Administrator, Lenovo XClarity Controller, or Lenovo XClarity Essentials.
5. Limited inventory.
6. Power management function is supported only by Lenovo XClarity Integrator for VMware vCenter.
7. It is highly recommended that you check the power summary data for your server using Lenovo Capacity Planner before purchasing any new parts.

Chapter 2. Server components

This section contains information about each of the components associated with the server.

Front view

This section contains information on the front view.

Note: The illustrations in this section show the location of certain parts. Some parts may not be supported at the same time within certain configuration(s).

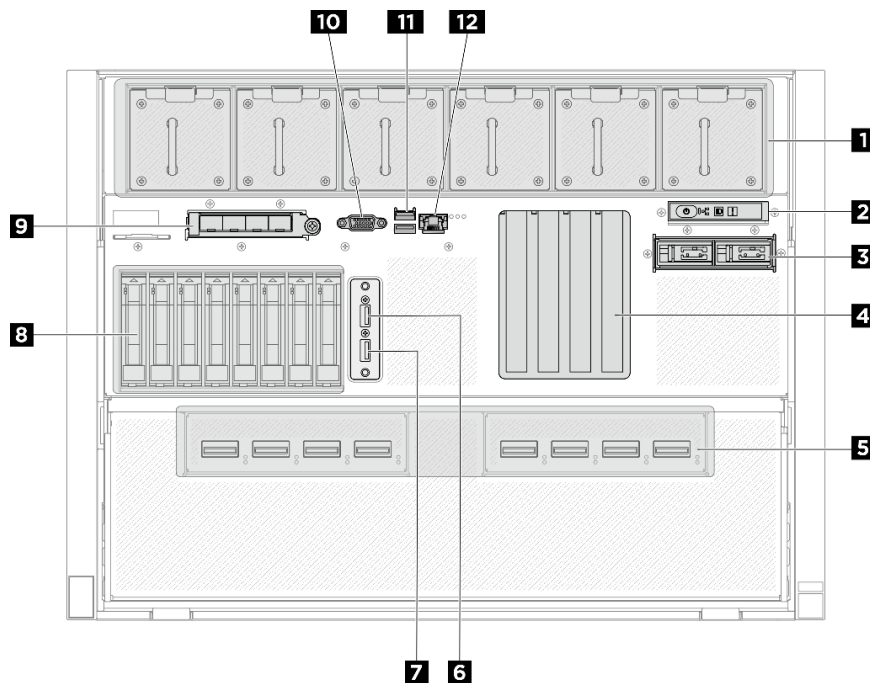


Figure 2. Front view

Table 2. Components on the front view

| | |
|--|---|
| 1 Front fans | 2 Integrated diagnostics panel |
| 3 M.2 drive bays (bays 0 to 1) | 4 PCIe slots (slots 2 to 5) |
| 5 OSFP connectors (slots 9 to 16) | 6 USB 3.2 Gen 1 (5 Gbps) connector |
| 7 USB 3.2 Gen 1 (5 Gbps) connector with Lenovo XClarity Controller management | 8 2.5-inch drive bays (bays 0 to 7) |
| 9 OCP module (slot 1) | 10 VGA connector |
| 11 USB 3.2 Gen 1 (5 Gbps) connectors (total of two connectors) | 12 XCC system management port (10/100/1000 Mbps RJ-45) |

1 Front fans

Install front fans in this space. See “Install a hot-swap fan” in *User Guide* or *Hardware Maintenance Guide* for more information.

2 Integrated diagnostics panel

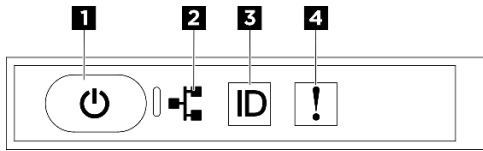


Figure 3. Integrated diagnostics panel LEDs

Table 3. Integrated diagnostics panel LEDs

| | |
|---|---------------------------------------|
| 1 Power button with power status LED (green) | 2 Network activity LED (green) |
| 3 System ID button with system ID LED (blue) | 4 System Error LED (yellow) |

1 Power button with power status LED (green)

You can press the power button to power on the server when you finish setting up the server. You also can hold the power button for several seconds to power off the server if you cannot shut down the server from the operating system. The states of the power LED are as follows:

| Status | Color | Description |
|--|-------|--|
| Off | None | No power supply is properly installed, or the LED itself has failed. |
| Flashing rapidly (four times per second) | Green | The server is turned off and is not ready to be turned on. The power button is disabled. This will last approximately 5 to 10 seconds. There may be a power fault or incorrect system cabling. If the LED continues flashing slowly (approximately every 10 seconds), check the XCC event log for more details. |
| Flashing slowly (once per second) | Green | The server is turned off and is ready to be turned on. You can press the power button to turn on the server. |
| Lit | Green | The server is turned on. |

2 Network activity LED (green)

The network activity LED helps you identify the network connectivity and activity.

| Status | Color | Description |
|----------|-------|--|
| On | Green | The server is connected to a network. |
| Blinking | Green | The network is connected and active. |
| Off | None | The server is disconnected from the network. |

3 System ID button with system ID LED (blue)

Use this system ID button and the blue system ID LED to visually locate the server. Each time you press the system ID button, the state of the system ID LED changes. The LED can be changed to on, blinking, or off. You can also use the Lenovo XClarity Controller or a remote management program to change the state of the system ID LED to assist in visually locating the server among other servers.

4 System Error LED (yellow)

The system error LED helps you to determine if there are any system errors.

| Status | Color | Description | Action |
|--------|--------|---|---|
| On | Yellow | <p>An error has been detected on the server. Causes might include one or more of the following errors:</p> <ul style="list-style-type: none"> • The temperature of the server reached the non-critical temperature threshold. • The voltage of the server reached the non-critical voltage threshold. • A fan has been detected to be running at low speed. • The power supply has a critical error. • The power supply is not connected to the power. | Check the LCD display or the event log to determine the exact cause of the error. |
| Off | None | The server is off or the server is on and is working correctly. | None. |

For more information about the integrated diagnostics panel, see [“Integrated diagnostics panel” on page 25](#).

3 M.2 drive bays (bays 0 to 1)

Install M.2 NVMe drives to these bays. See “Install a hot-swap M.2 drive assembly” in *User Guide* or *Hardware Maintenance Guide* for more information.

For more information on the M.2 drive LEDs, see [“Front LEDs” on page 21](#).

4 PCIe slots (slots 2 to 5)

Install the PCIe adapters into PCIe Gen5 x16 slots that support FH/HL configuration.

Note: SR680a V4 supports up to two PCIe adapters with TDP of up to 150W each.

5 OSFP connectors (slots 9 to 16)

There are eight 800 Gb/s OSFP connectors, which allows GPU direct connections for network support.

For more information on the OSFP LEDs, see [“Front LEDs” on page 21](#).

6/11 USB 3.2 Gen 1 (5 Gbps) connectors

The three USB 3.2 Gen 1 (5 Gbps) connectors can be used to attach a USB-compatible device, such as a USB keyboard, USB mouse, or USB storage device.

7 USB 3.2 Gen 1 (5 Gbps) connector with Lenovo XClarity Controller management

Connect a USB 2.0 device, such as a mouse, keyboard, or other devices, to this connector.

Connection to Lenovo XClarity Controller is primarily intended for users with a mobile device running the Lenovo XClarity Controller mobile application. When a mobile device is connected to this USB port, an Ethernet over USB connection is established between the mobile application running on the device and the Lenovo XClarity Controller.

Select **Network** in **BMC Configuration** to view or modify settings.

Four types of settings are available:

- **Host only mode**

In this mode, the USB port is always solely connected to the server.

- **BMC only mode**

In this mode, the USB port is always solely connected to Lenovo XClarity Controller.

- **Shared mode: owned by BMC**

In this mode, connection to the USB port is shared by the server and Lenovo XClarity Controller, while the port is switched to Lenovo XClarity Controller.

- **Shared mode: owned by host**

In this mode, connection to the USB port is shared by the server and Lenovo XClarity Controller, while the port is switched to the server.

8 2.5-inch drive bays (bays 0 to 7)

Install 2.5-inch NVMe drives to these bays. See “Install a 2.5-inch hot-swap drive” in *User Guide* or *Hardware Maintenance Guide* for more information.

For more information on the 2.5-inch drive LEDs, see [“Front LEDs” on page 21](#).

9 OCP module (slot 1)

The system features a PCIe Gen5 x16 OCP 3.0 slot that supports either a 2-port or 4-port network connection configuration. Port numbering are shown in the illustrations below.



Figure 4. Port numbering — 2-port OCP module

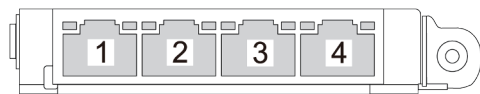


Figure 5. Port numbering — 4-port OCP module

10 VGA connector

Connect a monitor to this connector.

Note: The maximum video resolution is 1920 x 1200 at 60 Hz.

12 XCC system management port (10/100/1000 Mbps RJ-45)

The server has a 10/100/1000 Mbps RJ-45 connector dedicated to Lenovo XClarity Controller (XCC) functions. Through the system management port, you can access the Lenovo XClarity Controller directly by connecting your laptop to the management port using an Ethernet cable. Make sure that you modify the IP settings on the laptop so that it is on the same network as the server default settings. A dedicated management network provides additional security by physically separating the management network traffic from the production network.

See the following for more information:

- [“Set the network connection for the Lenovo XClarity Controller” on page 43](#)
- [“Front LEDs” on page 21](#)

Rear view

This section contains information on the rear view.

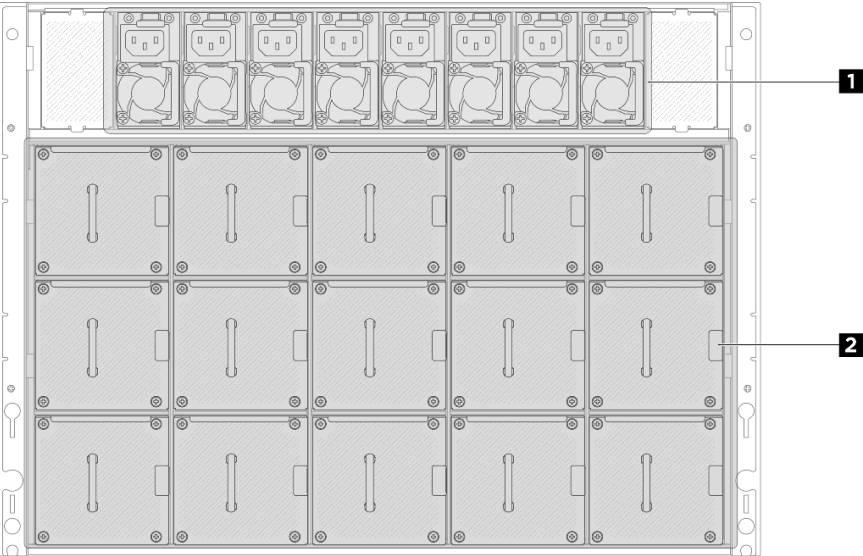


Figure 6. Rear view

Table 4. Components on the rear view

| | |
|-----------------------------|--------------------|
| 1 Power supply units | 2 Rear fans |
|-----------------------------|--------------------|

1 Power supply units

Install power supply units to these bays, connect them to power cords. Make sure the power cords are connected properly.

For more information on the power supply LEDs, see [“Power supply LEDs” on page 24](#).

2 Rear fans

Install rear fans in this space. See “Install a hot-swap fan” in *User Guide* or *Hardware Maintenance Guide* for more information.

Top view

This section contains information on the top view of the system shuttle.

Note: The top view shows the system shuttle pulled out from the chassis.

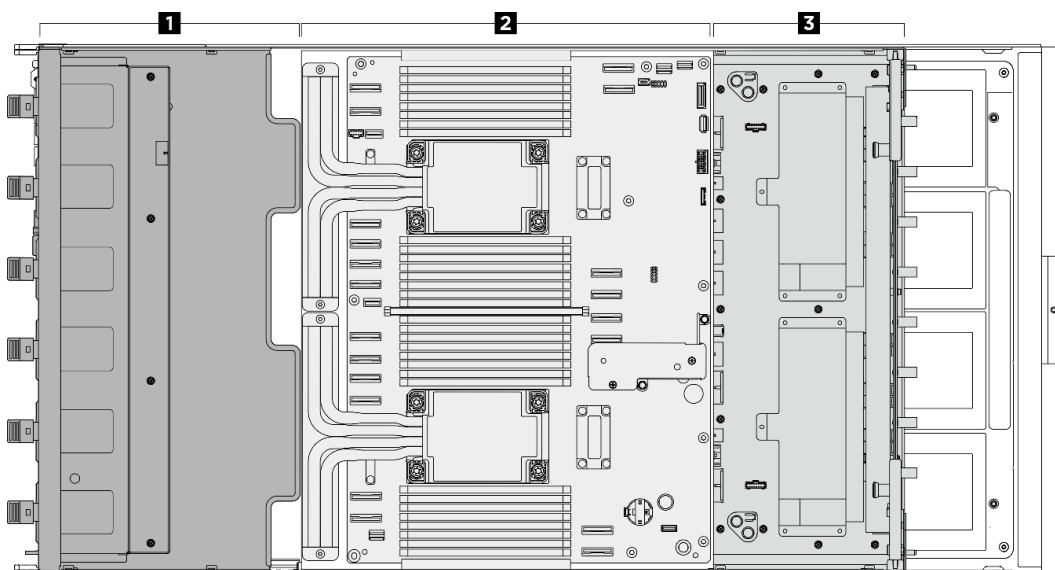


Figure 7. Top view

Table 5. Components on the top view

| | |
|-------------------------|-----------------------|
| 1 Front fan cage | 2 Compute tray |
| 3 Power complex | |

System-board layout

The illustrations in this section provide information about the connectors, switches, and jumpers that are available on the system board.

System board connectors

The following illustration shows the internal connectors on the system board.

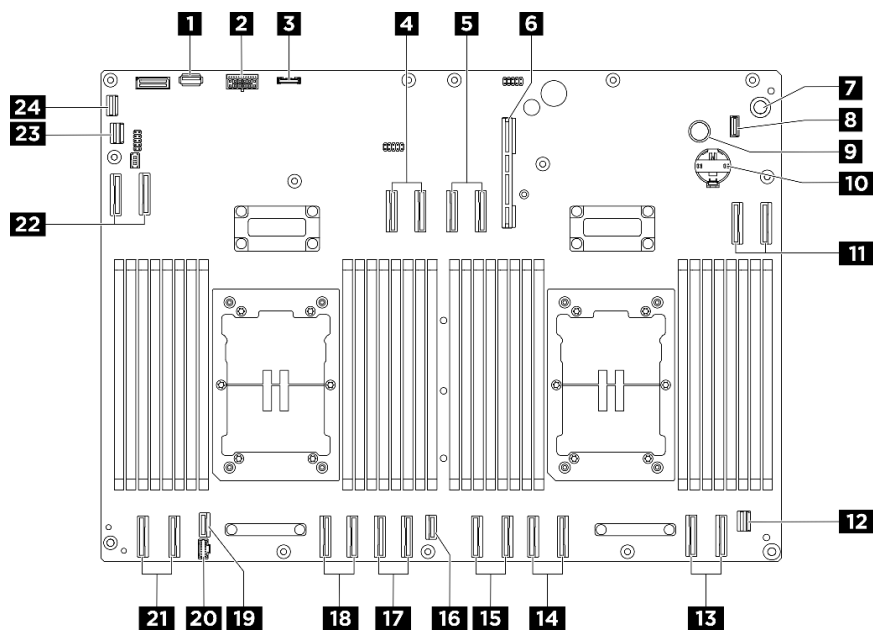


Figure 8. System board connectors

Table 6. System board connectors

| | |
|---|---|
| 1 USB 3.2 Gen 1 Type-A connector | 2 OCP interposer card power connector |
| 3 PCIe switch board sideband connector | 4 MCIO connectors 4A/4B |
| 5 MCIO connectors 8A/8B | 6 System I/O board connector (DC-SCM) |
| 7 12V (+) connector | 8 Integrated diagnostics panel (Front I/O) connector |
| 9 Ground (-) connector | 10 3V battery (CR2032) |
| 11 MCIO connectors 7A/7B | 12 EP management connector 2 |
| 13 MCIO connectors 6A/6B | 14 MCIO connectors 5A/5B |
| 15 MCIO connectors 10A/10B | 16 SPI/eSPI connector |
| 17 MCIO connectors 3A/3B | 18 MCIO connectors 2A/2B |
| 19 M.2 signal connector | 20 M.2 power connector |
| 21 MCIO connectors 1A/1B | 22 MCIO connectors 9A/9B |
| 23 EP management connector 1 | 24 USB assembly (Front panel I/O) connector |

System-board switches

The following illustrations show the location of the switches, jumpers, and buttons on the server.

Note: If there is a clear protective sticker on the top of the switch blocks, you must remove and discard it to access the switches.

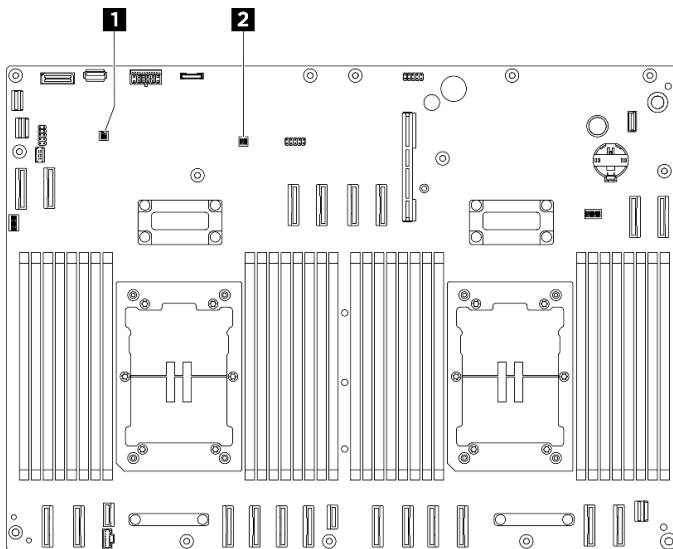


Figure 9. System-board switches

| | |
|---------------------------|---------------------------|
| 1 SW1 switch block | 2 SW2 switch block |
|---------------------------|---------------------------|

Important:

- Before you change any switch settings or move any jumpers, turn off the server; then, disconnect all power cords and external cables. Review the following information:
 - https://pubs.lenovo.com/safety_documentation/
 - “Installation Guidelines”, “Handling static sensitive devices”, and “Power off the server ” in *User Guide* or *Hardware Maintenance Guide*.
- Any system-board switch or jumper block that is not shown in the illustrations in this document are reserved.

SW1 switch block

The following table describes the functions of the SW1 switch block on the system board.

| Switch number | Default position | Description |
|---------------|------------------|---|
| 1 | Off | Reserved |
| 2 | Off | Reserved |
| 3 | Off | Reserved |
| 4 | Off | Off: Normal On: Clears the Real-Time Clock (RTC) registry (Clear CMOS) |

SW2 switch block

The following table describes the functions of the SW2 switch block on the system board.

Table 7. System board SW2 switch block description

| Switch number | Default position | Description |
|---------------|------------------|---|
| 1 | Off | Reserved |
| 2 | Off | Reserved |
| 3 | Off | Reserved |
| 4 | Off | Off: Normal On: Overwrites the power-on password |

System I/O board connectors

The following illustration shows the internal connectors on the system I/O board.

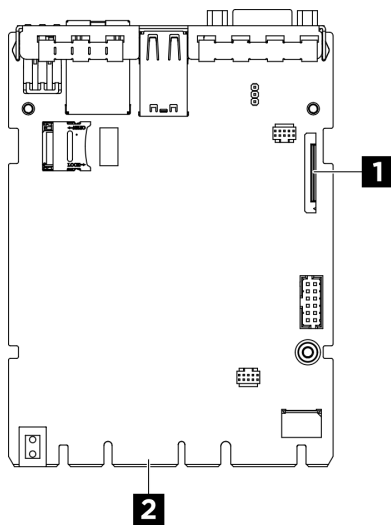


Figure 10. System I/O board connectors

Table 8. System I/O board connectors

| | |
|---|---------------------------------|
| 1 Second Lenovo XClarity Controller management connector | 2 System board connector |
|---|---------------------------------|

System LEDs and diagnostics display

See the following section for information on available system LEDs and diagnostics display.

For more information, refer to [“Troubleshooting by system LEDs and diagnostics display” on page 21](#).

Troubleshooting by system LEDs and diagnostics display

See the following section for information on available system LEDs and diagnostics display.

Front LEDs

This topic provides information about LEDs on the front of the server.

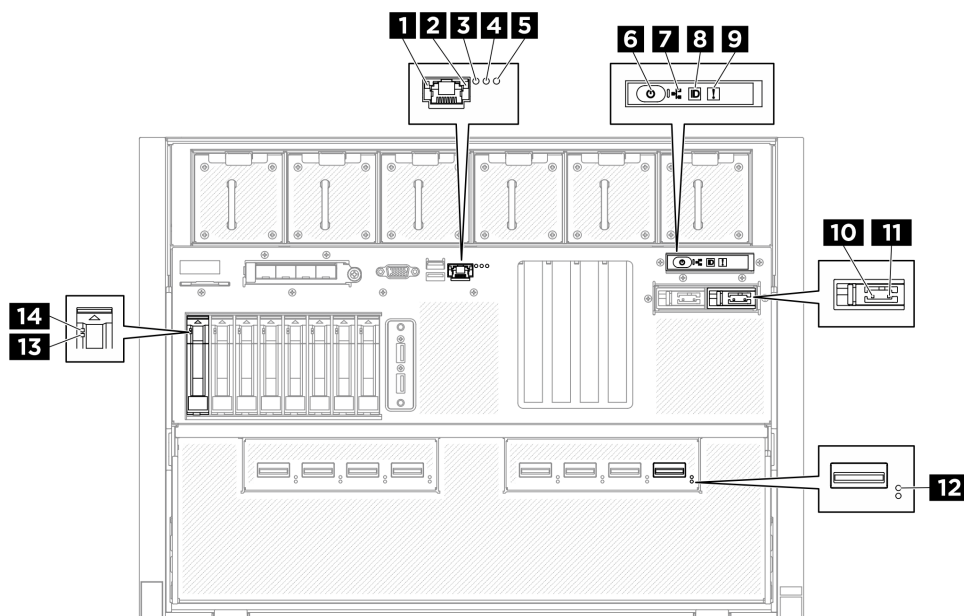


Figure 11. Front LEDs

1 XCC system management port (10/100/1000 Mbps RJ-45) link LED

Use this green LED to distinguish the network connectivity status:

- Off: The network link is disconnected.
- Green: The network link is established.

2 XCC system management port (10/100/1000 Mbps RJ-45) activity LED

Use this green LED to distinguish the network activity status:

- Off: The server is disconnected from a LAN.
- Green: The network is connected and active.

3 Location LED (blue)

This LED is used as a presence detection LED. You can use Lenovo XClarity Controller to light this LED remotely. Use this LED to locate the server among other servers visually.

4 System error LED (yellow)

LED on: an error has occurred. Complete the following steps:

1. Check the identification LED and check log LED and follow the instructions.
2. Check the Lenovo XClarity Controller event log and the system error log for information about the error.
3. Save the log if necessary, and clear the log afterwards.

5 RoT error LED (amber)

The RoT error LED indicates that there is a Root of Trust failure on either the XCC or UEFI image.

6 Power button with power status LED (green)

You can press the power button to power on the server when you finish setting up the server. You also can hold the power button for several seconds to power off the server if you cannot shut down the server from the operating system. The states of the power LED are as follows:

| Status | Color | Description |
|--|-------|--|
| Off | None | No power supply is properly installed, or the LED itself has failed. |
| Flashing rapidly (four times per second) | Green | The server is turned off and is not ready to be turned on. The power button is disabled. This will last approximately 5 to 10 seconds. There may be a power fault or incorrect system cabling. If the LED continues flashing slowly (approximately every 10 seconds), check the XCC event log for more details. |
| Flashing slowly (once per second) | Green | The server is turned off and is ready to be turned on. You can press the power button to turn on the server. |
| Lit | Green | The server is turned on. |

7 Network activity LED (green)

The network activity LED helps you identify the network connectivity and activity.

| Status | Color | Description |
|----------|-------|--|
| On | Green | The server is connected to a network. |
| Blinking | Green | The network is connected and active. |
| Off | None | The server is disconnected from the network. |

8 System ID button with system ID LED (blue)

Use this system ID button and the blue system ID LED to visually locate the server. Each time you press the system ID button, the state of the system ID LED changes. The LED can be changed to on, blinking, or off. You can also use the Lenovo XClarity Controller or a remote management program to change the state of the system ID LED to assist in visually locating the server among other servers.

9 System Error LED (yellow)

The system error LED helps you to determine if there are any system errors.

| Status | Color | Description | Action |
|--------|--------|--|---|
| On | Yellow | An error has been detected on the server. Causes might include one or more of the following errors: <ul style="list-style-type: none"> The temperature of the server reached the non-critical temperature threshold. The voltage of the server reached the non-critical voltage threshold. A fan has been detected to be running at low speed. The power supply has a critical error. The power supply is not connected to the power. | Check the LCD display or the event log to determine the exact cause of the error. |
| Off | None | The server is off or the server is on and is working correctly. | None. |

For more information about the integrated diagnostics panel, see [“Integrated diagnostics panel” on page 25](#).

10 M.2 drive activity LED (green)

The drive activity LED indicates the following status:

- The LED is on: the drive is idle.
- The LED is off: the drive appears de-asserted.
- The LED is blinking (about four times per second): the I/O activity of the drive is in progress.

11 M.2 drive status LED (yellow)

The drive status LED indicates the following status:

- The LED is on: a drive fault occurs.
- The LED is off: the drive is working normally.
- The LED is flashing slowly (once per second): the drive is being rebuilt.
- The LED is flashing rapidly (about four times per second): the drive is being located.

12 OSFP port 1 bi-color LED (green/yellow)

Use the bi-color LED to distinguish the link status of the OSFP port 1.

| Status | Color | Description |
|-----------------|--------|---|
| Off | N/A | A physical link is not detected |
| Blinking | Green | The network link is connected and active. |
| On | Green | The network link is connected with no active traffic. |
| Blinking (1 HZ) | Yellow | The beacon command is used to locate the OSFP card. |
| Blinking (4 HZ) | Yellow | An error has occurred to the link. The error can be from I ² C or overcurrent. |
| On | Yellow | A physical network link is detected. |

Note: Using command to light up locating LED is available when transceiver or cable is attached to the OSFP port.

13 2.5-inch drive status LED (yellow)

The drive status LED indicates the following status:

- The LED is lit: the drive has failed.
- The LED is flashing slowly (once per second): the drive is being rebuilt.
- The LED is flashing rapidly (three times per second): the drive is being identified.

14 2.5-inch drive activity LED (green)

Each hot-swap drive comes with an activity LED. When this LED is flashing, it indicates that the drive is in use.

Power supply LEDs

This topic provides information about various power supply LED status and corresponding action suggestions.

The following minimal configuration is required for the server:

- Two processors

- Minimum memory capacity – 2 or 3 TB of memory (sixteen 128 GB modules or thirty-two 64 GB/96 GB modules)
- Six power supplies
- One M.2 drive (If OS is needed for debugging)
- Twenty-one system fans
- One front PCIe Ethernet Adapter (If network is required)

The following table describes the problems that are indicated by various combinations of the power supply LEDs and the power-on LED and suggested actions to correct the detected problems.

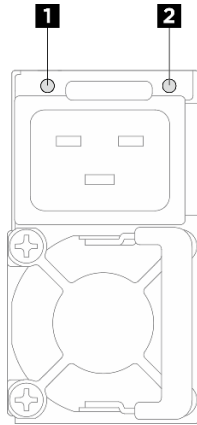


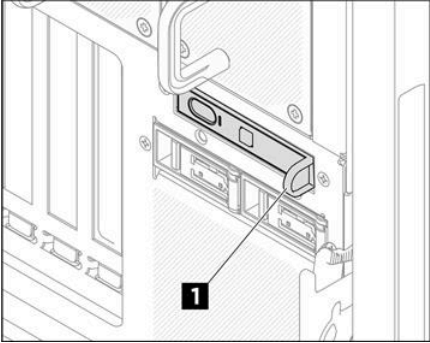
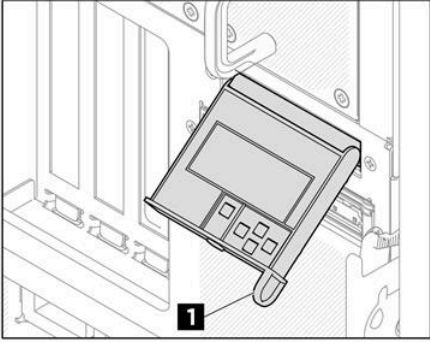
Figure 12. Power supply LEDs

| LED | Description |
|---|---|
| 1 Output and fault status (bi-color, green and yellow) | <p>The output and fault status LED can be in one of the following states:</p> <ul style="list-style-type: none"> • Off: The server is powered off, or the power supply unit is not working properly. If the server is powered on but the LED is off, replace the power supply unit. • Fast blinking green (about five flashes per second): The power supply unit is in firmware update mode. • Green: The server is on and the power supply unit is working normally. • Yellow: The power supply unit may have failed. Dump the FFDC log from the system and contact Lenovo back-end support team for PSU data log reviewing. |
| 2 Input status (single color, green) | <p>The input status LED can be in one of the following states:</p> <ul style="list-style-type: none"> • Off: The power supply unit is disconnected from the input power source. • Green: The power supply unit is connected to the input power source. • Blinking (1Hz): The input power is unhealthy. |

Integrated diagnostics panel

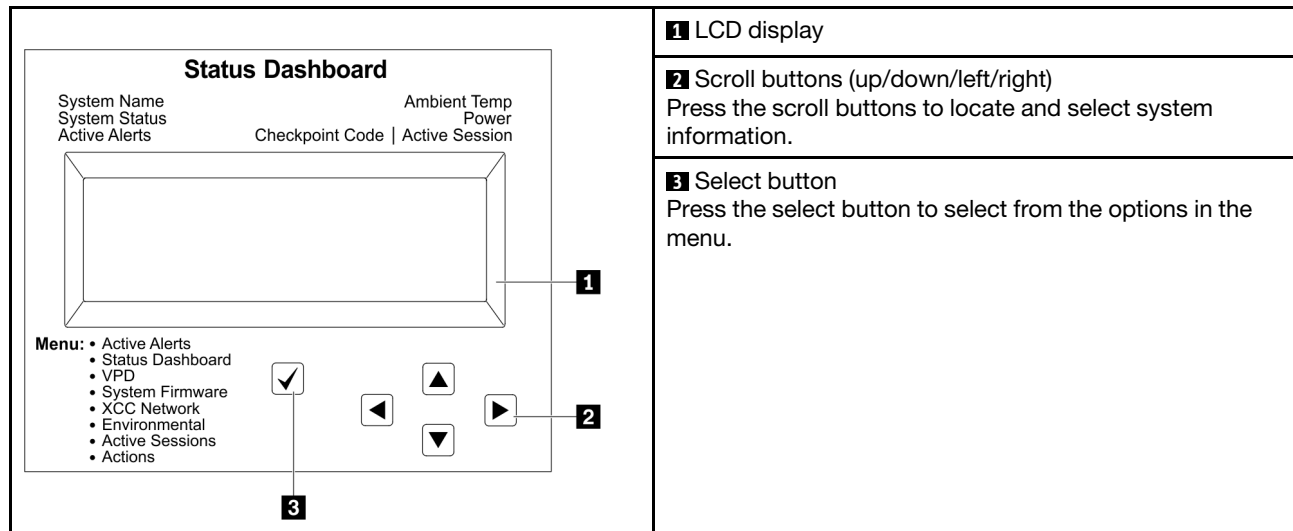
The integrated diagnostics panel is attached to the front of the system shuttle, while it allows quick access to system information such as errors, system status, firmware, network, and health information. The integrated diagnostics panel may also provide front operator panel function.

Location of the integrated diagnostics panel

| | |
|-----------------|---|
| Location | <p>The integrated diagnostics panel is attached to the front of the system shuttle.</p> <div data-bbox="394 285 821 625"></div> <div data-bbox="922 285 1349 625"></div> |
| Callout | <p>1 The handle with which the panel can be pulled out from the server.</p> <p>Notes:</p> <ul style="list-style-type: none">• The panel can be pushed in or pulled out regardless of the system power status.• When pulling it out, do it gently to avoid damage. |

Display panel overview

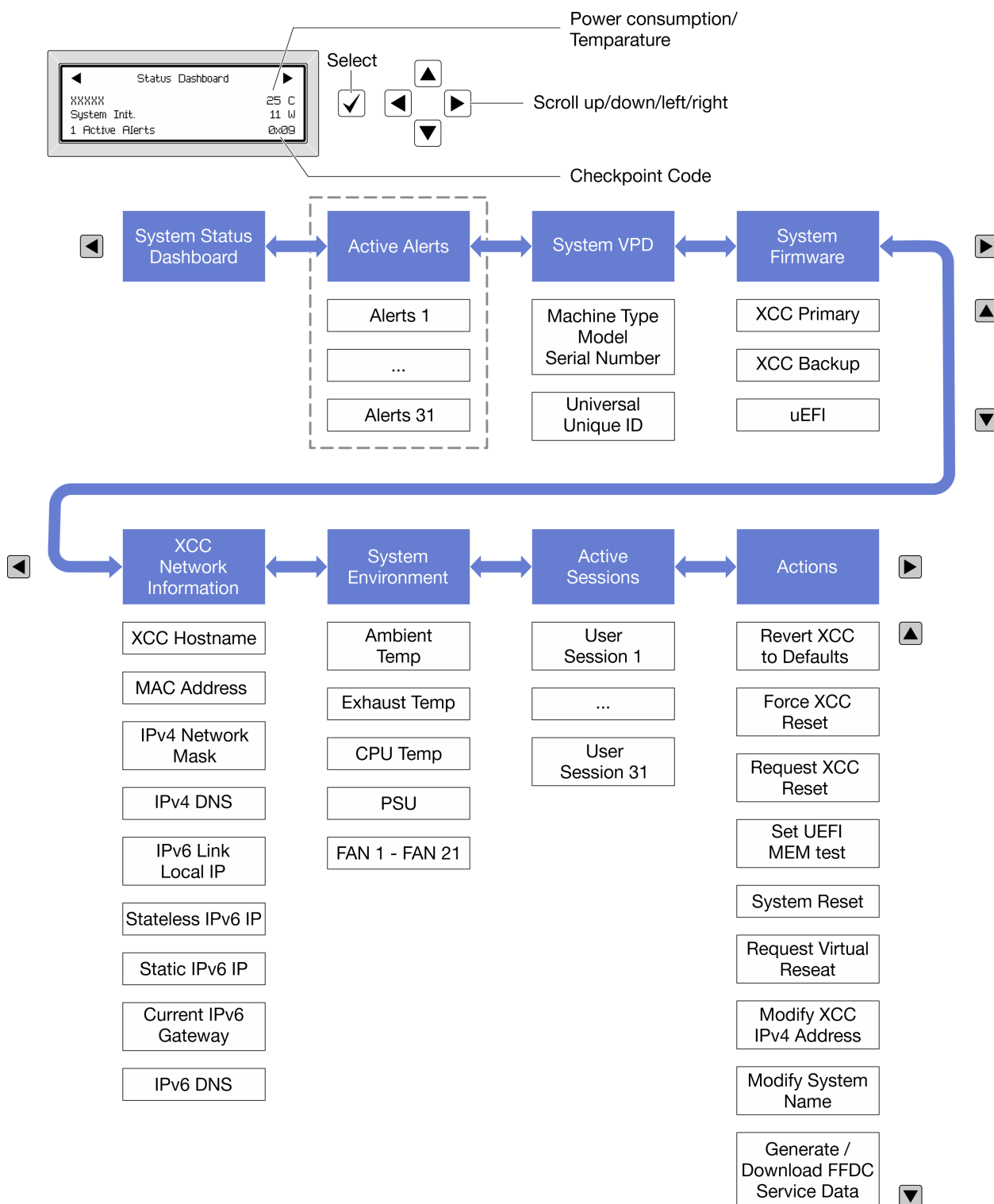
The diagnostics device consists of an LCD display and 5 navigation buttons.



Option flow diagram

The LCD panel displays various system information. Navigate through the options with the scroll keys.

Depending on the model, the options and entries on the LCD display might be different.




Full menu list

Following is the list of available options. Switch between an option and the subordinate information entries with the select button, and switch among options or information entries with the scroll buttons.

Depending on the model, the options and entries on the LCD display might be different.

Home Menu (System Status Dashboard)

| Home Menu | Example |
|---|---|
| <ul style="list-style-type: none">1 System name2 System status3 Active alert quantity4 Temperature5 Power consumption6 Checkpoint code |  <p>The screenshot shows a 'Status Dashboard' menu with the following items: 'xxxxxx' (1), 'System Init.' (2), '1 Active Alerts' (3), '25 C' (4), '11 W' (5), and '0x09' (6). Navigation arrows are visible at the top.</p> |

Active Alerts

| Sub Menu | Example |
|---|---|
| Home screen: Active error quantity Note: The “Active Alerts” menu displays only the quantity of active errors. If no errors occur, the “Active Alerts” menu will not be available during navigation. | 1 Active Alerts |
| Details screen: <ul style="list-style-type: none">• Error message ID (Type: Error/Warning/Information)• Occurrence time• Possible sources of the error | Active Alerts: 1 Press ▼ to view alert details FQXSPPU009N(Error) 04/07/2020 02:37:39 PM CPU 1 Status: Configuration Error |

System VPD Information

| Sub Menu | Example |
|---|--|
| <ul style="list-style-type: none">• Machine type and serial number• Universal Unique ID (UUID) | Machine Type: xxxx Serial Num: xxxxxx Universal Unique ID: xxxxxxxxxxxxxxxxxxxxxxxxxxxx |

System Firmware

| Sub Menu | Example |
|--|---|
| XCC Primary <ul style="list-style-type: none">Firmware level (status)Build IDVersion numberRelease date | XCC Primary (Active) Build: DVI399T Version: 4.07 Date: 2020-04-07 |
| XCC Backup <ul style="list-style-type: none">Firmware level (status)Build IDVersion numberRelease date | XCC Backup (Active) Build: D8BT05I Version: 1.00 Date: 2019-12-30 |
| UEFI <ul style="list-style-type: none">Firmware level (status)Build IDVersion numberRelease date | UEFI (Inactive) Build: D0E101P Version: 1.00 Date: 2019-12-26 |

XCC Network Information

| Sub Menu | Example |
|---|---|
| <ul style="list-style-type: none">XCC hostnameMAC addressIPv4 Network MaskIPv4 DNSIPv6 Link Local IPStateless IPv6 IPStatic IPv6 IPCurrent IPv6 GatewayIPv6 DNS <p>Note: Only the MAC address that is currently in use is displayed (extension or shared).</p> | XCC Network Information XCC Hostname: XCC-xxxx-SN MAC Address: xx:xx:xx:xx:xx:xx IPv4 IP: xx.xx.xx.xx IPv4 Network Mask: x.x.x.x IPv4 Default Gateway: x.x.x.x |

System Environmental Information

| Sub Menu | Example |
|--|--|
| <ul style="list-style-type: none">• Ambient temperature• Exhaust temperature• CPU temperature• PSU status• Spinning speed of fans by RPM | Ambient Temp: 24 C Exhaust Temp: 30 C CPU1 Temp: 50 C PSU1: Vin= 213 w Inlet= 26 C FAN1 Front: 21000 RPM FAN2 Front: 21000 RPM FAN3 Front: 21000 RPM FAN4 Front: 21000 RPM |

Active Sessions

| Sub Menu | Example |
|-----------------------------|-------------------------|
| Quantity of active sessions | Active User Sessions: 1 |

Actions

| Sub Menu | Example |
|--|---|
| Several quick actions are available: <ul style="list-style-type: none">• Revert XCC to Defaults• Force XCC Reset• Request XCC Reset• Set UEFI Memory Test• Request Virtual Reseat• Modify XCC Static IPv4 Address/Net mask/Gateway• Modify System Name• Generate/Download FFDC Service Data | Request XCC Reset? This will request the BMC to reboot itself. Hold √ for 3 seconds |

Chapter 3. Parts list

Identify each of the components that is available for your server with the parts list.

For more information about ordering parts:

1. Go to <http://datacentersupport.lenovo.com> and navigate to the support page for your server.
2. Click **Parts**.
3. Enter the serial number to view a listing of parts for your server.

It is highly recommended that you check the power summary data for your server using Lenovo Capacity Planner before purchasing any new parts.

Note: Depending on the model, your server might look slightly different from the illustration.

The parts listed in the following tables are identified as one of the following:

- **T1:** Tier 1 customer replaceable unit (CRU). Replacement of Tier 1 CRUs is your responsibility. If Lenovo installs a Tier 1 CRU at your request with no service agreement, you will be charged for the installation.
- **T2:** Tier 2 customer replaceable unit (CRU). You may install a Tier 2 CRU yourself or request Lenovo to install it, at no additional charge, under the type of warranty service that is designated for your server.
- **F:** Field replaceable unit (FRU). FRUs must be installed only by trained service technicians.
- **C:** Consumable and Structural parts. Purchase and replacement of consumable and structural parts (components, such as a filler or bezel) is your responsibility. If Lenovo acquires or installs a structural component at your request, you will be charged for the service.

See corresponding system components categorized as follows:

- [“Non-GPU-related system components” on page 34](#)
- [“GPU-related system components” on page 36](#)

Non-GPU-related system components

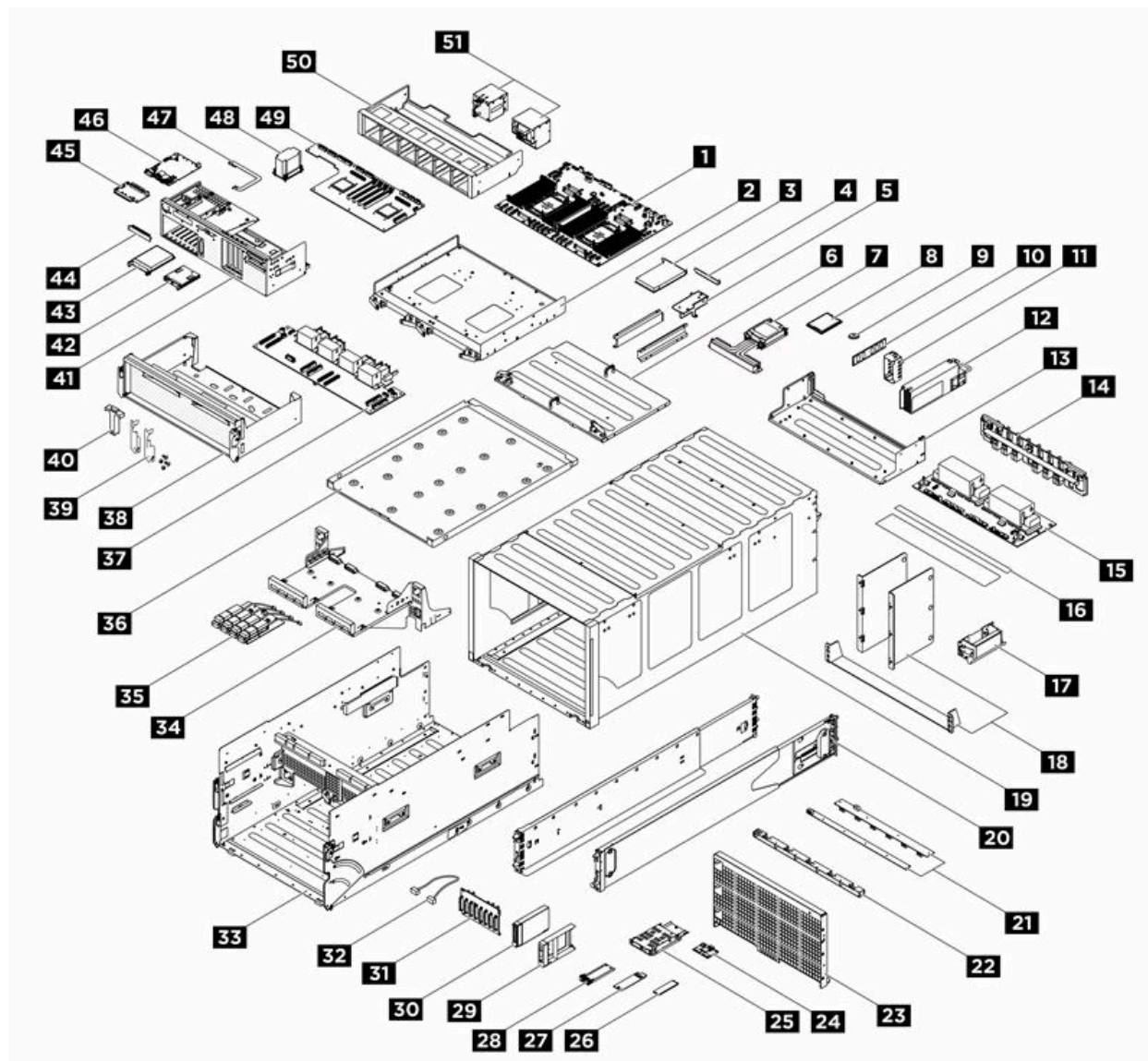


Figure 13. Non-GPU-related system components

Table 9. Parts list

| Index | Description | Type | Index | Description | Type |
|--|--------------|------|----------|---------------------------|------|
| For more information about ordering parts: | | | | | |
| 1. Go to http://datacentersupport.lenovo.com and navigate to the support page for your server. | | | | | |
| 2. Click Parts . | | | | | |
| 3. Enter the serial number to view a listing of parts for your server. | | | | | |
| 1 | System board | F | 2 | Compute tray | F |
| 3 | PCIe adapter | F | 4 | PCIe filler (single-slot) | T1 |

Table 9. Parts list (continued)

| Index | Description | Type | Index | Description | Type |
|-----------|---------------------------------------|------|-----------|--|------|
| 5 | Cable guides | F | 6 | Cable holder frame and baffle assembly | F |
| 7 | Processor heat sink | F | 8 | Processor | F |
| 9 | CMOS battery (CR2032) | C | 10 | Memory module | T1 |
| 11 | Power supply filler | C | 12 | Power supply unit | T1 |
| 13 | Power distribution board tray | F | 14 | PSU interposer | F |
| 15 | Power distribution board | F | 16 | Label kit | F |
| 17 | Chassis lift handle | F | 18 | Chassis support brackets | F |
| 19 | Chassis | F | 20 | Slide rail kit | C |
| 21 | Fan control boards | F | 22 | Rear fan control board bracket | F |
| 23 | Rear fan bulkhead | F | 24 | M.2 backplane | F |
| 25 | M.2 drive cage | F | 26 | Hot-swap M.2 drive | T1 |
| 27 | M.2 interposer | T2 | 28 | M.2 drive tray | T2 |
| 29 | 2.5-inch drive filler (1-bay) | C | 30 | 2.5-inch hot-swap drive | T1 |
| 31 | 2.5-inch drive backplane | F | 32 | Cable | F |
| 33 | System shuttle | F | 34 | OSFP support tray | F |
| 35 | OSFP card | F | 36 | GPU shuttle base | F |
| 37 | Retimer board | F | 38 | Retimer board shuttle | F |
| 39 | Retimer board shuttle release levers | T1 | 40 | UltraPass connector removal tool | F |
| 41 | NVMe drive and PCIe switch board cage | F | 42 | Integrated diagnostics panel | F |
| 43 | OCP module | T1 | 44 | OCP slot filler | C |
| 45 | OCP interposer card | F | 46 | System I/O board | F |
| 47 | FPC cable | F | 48 | PCIe switch board heat sink | F |
| 49 | PCIe switch board | F | 50 | Front fan cage | F |
| 51 | Fans | T1 | | | |

GPU-related system components

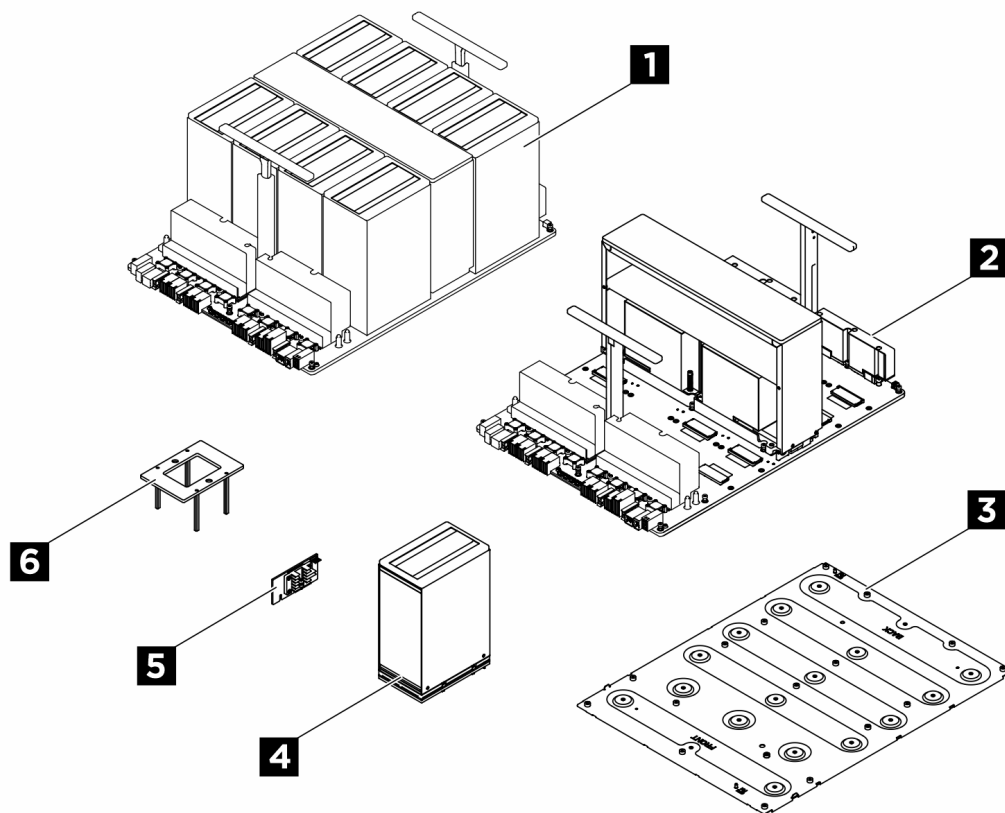


Figure 14. GPU-related system components

Table 10. Parts list

| Index | Description | Type | Index | Description | Type |
|---|---------------------------|------|----------|--------------------------|------|
| For more information about ordering parts: 1. Go to http://datacentersupport.lenovo.com and navigate to the support page for your server. 2. Click Parts . 3. Enter the serial number to view a listing of parts for your server. | | | | | |
| 1 | GPU complex | F | 2 | GPU baseboard | F |
| 3 | GPU complex adapter plate | F | 4 | GPU and heat sink module | F |
| 5 | HMC card | F | 6 | B300 jig | F |

Power cords

Several power cords are available, depending on the country and region where the server is installed.

To view the power cords that are available for the server:

1. Go to:

<http://dcsc.lenovo.com/#/>

2. Click **Preconfigured Model** or **Configure to order**.

3. Enter the machine type and model for your server to display the configurator page.

4. Click **Power** → **Power Cables** to see all line cords.

Notes:

- For your safety, a power cord with a grounded attachment plug is provided to use with this product. To avoid electrical shock, always use the power cord and plug with a properly grounded outlet.
- Power cords for this product that are used in the United States and Canada are listed by Underwriter's Laboratories (UL) and certified by the Canadian Standards Association (CSA).
- For units intended to be operated at 115 volts: Use a UL-listed and CSA-certified cord set consisting of a minimum 18 AWG, Type SVT or SJT, three-conductor cord, a maximum of 15 feet in length and a parallel blade, grounding-type attachment plug rated 15 amperes, 125 volts.
- For units intended to be operated at 230 volts (U.S. use): Use a UL-listed and CSA-certified cord set consisting of a minimum 18 AWG, Type SVT or SJT, three-conductor cord, a maximum of 15 feet in length and a tandem blade, grounding-type attachment plug rated 15 amperes, 250 volts.
- For units intended to be operated at 230 volts (outside the U.S.): Use a cord set with a grounding-type attachment plug. The cord set should have the appropriate safety approvals for the country in which the equipment will be installed.
- Power cords for a specific country or region are usually available only in that country or region.

Chapter 4. Unboxing and setup

Information in this section assists you on unboxing and setting up the server. When unboxing the server, check if the items in the package are correct, and learn where to find information of server serial number and Lenovo XClarity Controller access. Make sure to follow the instructions in [“Server setup checklist” on page 41](#) when setting up the server.

Attention: Two people and one lifting device on site that can support up to 400 lb (181 kg) are required to perform this procedure. If you do not already have a lifting device available, Lenovo offers the Genie Lift GL-8 material lift that can be purchased at Data Center Solution Configurator: <https://dcsc.lenovo.com/#/configuration/cto/7D5YCTO1WW?hardwareType=lifttool>. Make sure to include the Foot-release brake and the Load Platform when ordering the Genie Lift GL-8 material lift.

Server package contents

When you receive your server, verify that the shipment contains everything that you expected to receive.

The server package includes the following items:

- Server
- Rail installation kit*. Installation guide is provided in the package.
- Material box, including items such as power cords*, accessory kit, and printed documents.

Notes:

- Some of the items listed are available on select models only.
- Items marked with asterisk(*) are optional.

If any item is missing or damaged, contact your place of purchase. Ensure that you retain your proof of purchase and packing material. They might be required to receive warranty service.

Identify the server and access the Lenovo XClarity Controller

This section contains instruction on how to identify your server and where to find the Lenovo XClarity Controller access information.

Identifying your server

When you contact Lenovo for help, the machine type, model, and serial number information help support technicians to identify your server and provide faster service.

The illustration below shows the location of the ID label which contains the model number, machine type, and serial number of the server. You can also add other system information labels to the front of the server in the customer label spaces.

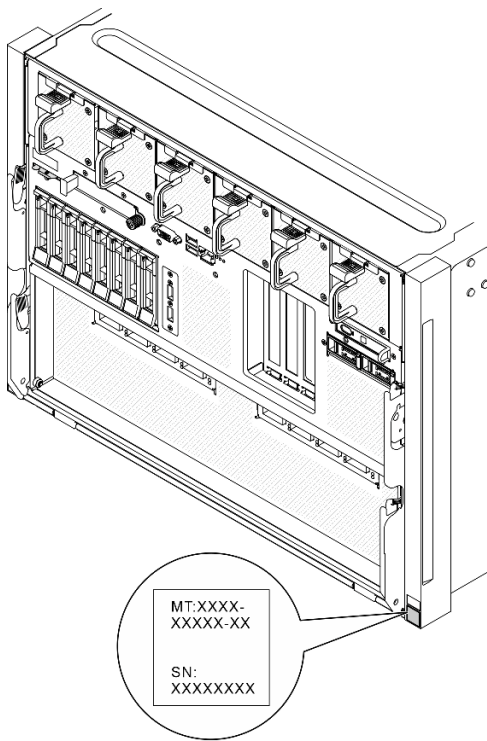


Figure 15. Location of the ID label

Lenovo XClarity Controller network access label

In addition, the Lenovo XClarity Controller network access label is attached to the pull-out information tab located in the front of the system shuttle, with MAC address accessible with a pull.

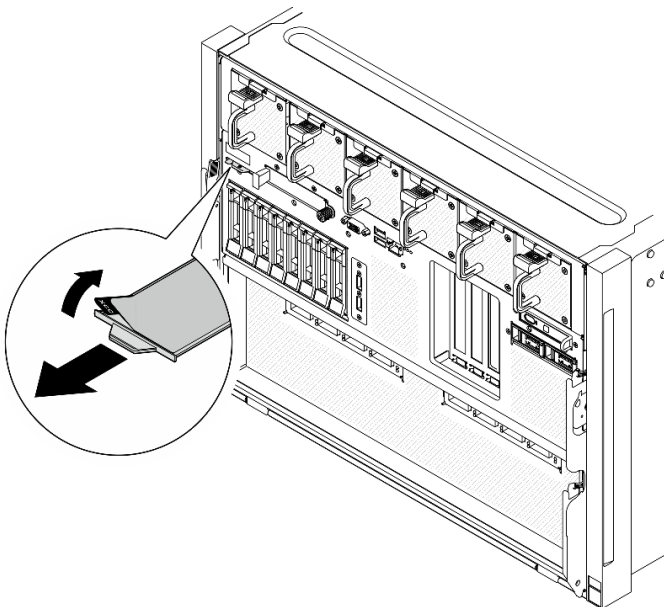


Figure 16. Lenovo XClarity Controller network access label on the pull-out information tab

Service Label and QR code

In addition, the system Service Label is located on the front fan cage, provides a quick reference (QR) code for mobile access to service information. You can scan the QR code with a mobile device using a QR code reader application and get quick access to the Service Information web page. The Service Information web page provides additional information for parts installation and replacement videos, and error codes for solution support.

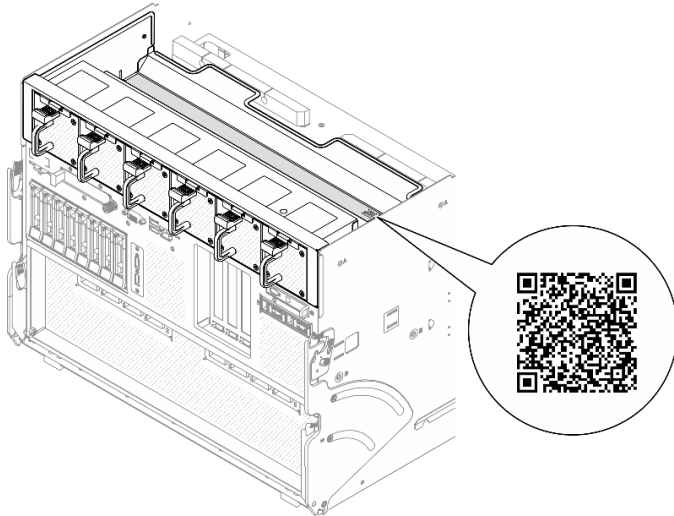


Figure 17. Service Label and QR code

Server setup checklist

Use the server setup checklist to ensure that you have performed all tasks that are required to set up your server.

The server setup procedure varies depending on the configuration of the server when it was delivered. In some cases, the server is fully configured and you just need to connect the server to the network and an AC power source, and then you can power on the server. In other cases, the server needs to have hardware options installed, requires hardware and firmware configuration, and requires an operating system to be installed.

The following steps describe the general procedure for setting up a server.

Setup the server hardware

Complete the following procedures to setup the server hardware.

Attention: Two people and one lifting device on site that can support up to 400 lb (181 kg) are required to perform this procedure. If you do not already have a lifting device available, Lenovo offers the Genie Lift GL-8 material lift that can be purchased at Data Center Solution Configurator: <https://dcsc.lenovo.com/#/configuration/cto/7D5YCTO1WW?hardwareType=lifttool>. Make sure to include the Foot-release brake and the Load Platform when ordering the Genie Lift GL-8 material lift.

1. Unpack the server package. See “[Server package contents](#)” on page 39.
2. Install any required hardware or server options. See the related topics in “Hardware replacement procedures” in *User Guide* or *Hardware Maintenance Guide*.
3. If necessary, install the rail to a standard rack cabinet. Follow the instruction in *Rail Installation Guide* that comes with the rail installation kit.

4. If necessary, install the chassis into a standard rack cabinet. See “Install the chassis to rack” in *User Guide* or *Hardware Maintenance Guide*.
5. Connect all external cables to the server. See [Chapter 2 “Server components” on page 13](#) for connectors locations.

Typically, you will need to connect the following cables:

- Connect server to the power source
 - Connect server to the data network
 - Connect the server to the storage device
 - Connect the server to the management network
6. Power on the server.

Power button location and power LED are specified in:

- [Chapter 2 “Server components” on page 13](#)
- [“Troubleshooting by system LEDs and diagnostics display” on page 21](#)

The server can be turned on (power LED on) in any of the following ways:

- You can press the power button.
- The server can restart automatically after a power interruption.
- The server can respond to remote power-on requests sent to the Lenovo XClarity Controller.

Note: You can access the management processor interface to configure the system without powering on the server. Whenever the server is connected to power, the management processor interface is available. For details about accessing the management server processor, see “Opening and Using the XClarity Controller Web Interface” section in the XCC documentation compatible with your server at <https://pubs.lenovo.com/lxcc-overview/>.

7. Validate the server. Make sure that the power LED, Ethernet connector LED, and network LED are lit with green light, which means the server hardware was set up successfully.

See [“System LEDs and diagnostics display” on page 21](#) for more information on the LED indications.

Configure the system

Complete the following procedures to configure the system. For detailed instructions, refer to [Chapter 5 “System configuration” on page 43](#).

1. Set the network connection for the Lenovo XClarity Controller to the management network.
2. Update the firmware for the server, if necessary.
3. Configure the firmware for the server.

The following information is available for RAID configuration:

- <https://lenovopress.lenovo.com/lp0578-lenovo-raid-introduction>
 - <https://lenovopress.lenovo.com/lp0579-lenovo-raid-management-tools-and-resources>
4. Install the operating system.
 5. Back up the server configuration.
 6. Install the applications and programs for which the server is intended to be used.

Chapter 5. System configuration

Complete these procedures to configure your system.

Set the network connection for the Lenovo XClarity Controller

Before you can access the Lenovo XClarity Controller over your network, you need to specify how Lenovo XClarity Controller will connect to the network. Depending on how the network connection is implemented, you might need to specify a static IP address as well.

The following methods are available to set the network connection for the Lenovo XClarity Controller if you are not using DHCP:

- If a monitor is attached to the server, you can use Lenovo XClarity Provisioning Manager to set the network connection.

Complete the following steps to connect the Lenovo XClarity Controller to the network using the Lenovo XClarity Provisioning Manager.

1. Start the server.
2. Press the key specified in the on-screen instructions to display the Lenovo XClarity Provisioning Manager interface. (For more information, see the “Startup” section in the LXPM documentation compatible with your server at <https://pubs.lenovo.com/lxpm-overview/>.)
3. Go to **LXPM → UEFI Setup → BMC Settings** to specify how the Lenovo XClarity Controller will connect to the network.
 - If you choose a static IP connection, make sure that you specify an IPv4 or IPv6 address that is available on the network.
 - If you choose a DHCP connection, make sure that the MAC address for the server has been configured in the DHCP server.
4. Click **OK** to apply the setting and wait for two to three minutes.
5. Use an IPv4 or IPv6 address to connect Lenovo XClarity Controller.

Important: The Lenovo XClarity Controller is set initially with a user name of USERID and password of PASSWORD (with a zero, not the letter O). This default user setting has Supervisor access. It is required to change this user name and password during your initial configuration for enhanced security.

Set USB port for Lenovo XClarity Controller connection

Before you can access the Lenovo XClarity Controller through the USB port, you need to configure the USB port for Lenovo XClarity Controller connection.

Server support

To see if your server supports accessing Lenovo XClarity Controller through the USB port, check one of the following:

- Refer to [Chapter 2 “Server components” on page 13](#).



- If there is a wrench icon on the USB port of your server, you can set the management USB port to connect to Lenovo XClarity Controller. It is also the only USB port that supports USB automation update of the system I/O board (or firmware and RoT security module).

Setting the USB port for Lenovo XClarity Controller connection

You can switch the USB port between normal and Lenovo XClarity Controller management operation by performing one of the following steps.

- Hold the ID button for at least 3 seconds until its LED flashes slowly (once every couple of seconds). See [Chapter 2 “Server components” on page 13](#) for ID button location.
- From the Lenovo XClarity Controller management controller CLI, run the `usbfp` command. For information about using the Lenovo XClarity Controller CLI, see the “Command-line interface” section in the XCC documentation compatible with your server at <https://pubs.lenovo.com/lxcc-overview/>.
- From the Lenovo XClarity Controller management controller web interface, click **BMC Configuration → Network → USB Management Port Assignment**. For information about Lenovo XClarity Controller web interface functions, see the “Description of XClarity Controller functions on web interface” section in the XCC documentation compatible with your server at <https://pubs.lenovo.com/lxcc-overview/>.

Checking USB port current setting

You can also check the current setting of the USB port using the Lenovo XClarity Controller management controller CLI (`usbfp` command) or the Lenovo XClarity Controller management controller web interface (**BMC Configuration → Network → USB Management Port Assignment**). See the “Command-line interface” and “Description of XClarity Controller functions on web interface” sections in the XCC documentation compatible with your server at <https://pubs.lenovo.com/lxcc-overview/>.

Update the firmware

Several options are available to update the firmware for the server.

You can use the tools listed here to update the most current firmware for your server and the devices that are installed in the server.

Notes: It is recommended to update the firmware in the following sequence:

- BMC (XCC)
 - FPGA HPM
 - FPGA SCM
 - UEFI
-
- Best practices related to updating firmware is available at the following site:
 - <https://lenovopress.lenovo.com/lp0656-lenovo-thinksystem-firmware-and-driver-update-best-practices>
 - The latest firmware can be found at the following site:
 - <https://datacentersupport.lenovo.com/tw/en/products/servers/thinksystem/sr680av4/7dmk/downloads/driver-list/>
 - You can subscribe to product notification to stay up to date on firmware updates:
 - <https://datacentersupport.lenovo.com/solutions/ht509500>

Update Bundles (Service Packs)

Lenovo typically releases firmware in bundles called Update Bundles (Service Packs). To ensure that all of the firmware updates are compatible, you should update all firmware at the same time. If you are updating firmware for both the Lenovo XClarity Controller and UEFI, update the firmware for Lenovo XClarity Controller first.

Update method terminology

- **In-band update.** The installation or update is performed using a tool or application within an operating system that is executing on the server's core CPU.
- **Out-of-band update.** The installation or update is performed by the Lenovo XClarity Controller collecting the update and then directing the update to the target subsystem or device. Out-of-band updates have no dependency on an operating system executing on the core CPU. However, most out-of-band operations do require the server to be in the S0 (Working) power state.
- **On-Target update.** The installation or update is initiated from an installed operating system executing on the target server itself.
- **Off-Target update.** The installation or update is initiated from a computing device interacting directly with the server's Lenovo XClarity Controller.
- **Update Bundles (Service Packs).** Update Bundles (Service Packs) are bundled updates designed and tested to provide the interdependent level of functionality, performance, and compatibility. Update Bundles (Service Packs) are server machine-type specific and are built (with firmware and device driver updates) to support specific Windows Server, Red Hat Enterprise Linux (RHEL) and SUSE Linux Enterprise Server (SLES) operating system distributions. Machine-type-specific firmware-only Update Bundles (Service Packs) are also available.

Firmware updating tools

See the following table to determine the best Lenovo tool to use for installing and setting up the firmware:

| Tool | Update Methods Supported | Core System Firmware Updates | I/O Devices Firmware Updates | Drive Firmware Updates | Graphical user interface | Command line interface | Supports Update Bundles (Service Packs) |
|---|---|------------------------------|------------------------------|------------------------|--------------------------|------------------------|---|
| Lenovo XClarity Provisioning Manager (LXPM) | In-band ² On-Target | ✓ | | | ✓ | | |
| Lenovo XClarity Controller (XCC) | In-band ⁴ Out-of-band Off-Target | ✓ | Selected I/O devices | ✓ ³ | ✓ | | ✓ |
| Lenovo XClarity Essentials OneCLI (OneCLI) | In-band Out-of-band On-Target Off-Target | ✓ | All I/O devices | ✓ ³ | | ✓ | ✓ |

| Tool | Update Methods Supported | Core System Firmware Updates | I/O Devices Firmware Updates | Drive Firmware Updates | Graphical user interface | Command line interface | Supports Update Bundles (Service Packs) |
|---|--|------------------------------|------------------------------|------------------------|--------------------------|-------------------------|---|
| Lenovo XClarity Essentials UpdateXpress (LXCE) | In-band Out-of-band On-Target Off-Target | ✓ | All I/O devices | | ✓ | | ✓ |
| Lenovo XClarity Essentials Bootable Media Creator (BoMC) | In-band Out-of-band Off-Target | ✓ | All I/O devices | | ✓ (BoMC application) | ✓ (BoMC application) | ✓ |
| Lenovo XClarity Administrator (LXCA) | In-band ¹ Out-of-band ² Off-Target | ✓ | All I/O devices | ✓ | ✓ | | ✓ |
| Lenovo XClarity Integrator (LXCI) for VMware vCenter | Out-of-band Off-Target | ✓ | Selected I/O devices | | ✓ | | |
| Lenovo XClarity Integrator (LXCI) for Microsoft Windows Admin Center | In-band Out-of-band On-Target Off-Target | ✓ | All I/O devices | | ✓ | | ✓ |
| Notes: <ol style="list-style-type: none"> For I/O firmware updates. For BMC and UEFI firmware updates. Drive firmware update is only supported by the tools and methods below: <ul style="list-style-type: none"> XCC Bare Metal Update (BMU): In-band, and requires system reboot. Lenovo XClarity Essentials OneCLI: In-band, and does not require system reboot. Bare Metal Update (BMU) only. | | | | | | | |

• **Lenovo XClarity Provisioning Manager**

From Lenovo XClarity Provisioning Manager, you can update the Lenovo XClarity Controller firmware, the UEFI firmware, and the Lenovo XClarity Provisioning Manager software.

Note: By default, the Lenovo XClarity Provisioning Manager Graphical User Interface is displayed when you start the server and press the key specified in the on-screen instructions. If you have changed that

default to be the text-based system setup, you can bring up the Graphical User Interface from the text-based system setup interface.

For additional information about using Lenovo XClarity Provisioning Manager to update firmware, see:

“Firmware Update” section in the LXPM documentation compatible with your server at <https://pubs.lenovo.com/lxpm-overview/>

- **Lenovo XClarity Controller**

If you need to install a specific update, you can use the Lenovo XClarity Controller interface for a specific server.

Notes:

- To perform an in-band update through Windows or Linux, the operating system driver must be installed and the Ethernet-over-USB (sometimes called LAN over USB) interface must be enabled.

For additional information about configuring Ethernet over USB, see:

“Configuring Ethernet over USB” section in the XCC documentation version compatible with your server at <https://pubs.lenovo.com/lxcc-overview/>

- If you update firmware through the Lenovo XClarity Controller, make sure that you have downloaded and installed the latest device drivers for the operating system that is running on the server.

For additional information about using Lenovo XClarity Controller to update firmware, see:

“Updating Server Firmware” section in the XCC documentation compatible with your server at <https://pubs.lenovo.com/lxcc-overview/>

- **Lenovo XClarity Essentials OneCLI**

Lenovo XClarity Essentials OneCLI is a collection of command line applications that can be used to manage Lenovo servers. Its update application can be used to update firmware and device drivers for your servers. The update can be performed within the host operating system of the server (in-band) or remotely through the BMC of the server (out-of-band).

For additional information about using Lenovo XClarity Essentials OneCLI to update firmware, see:

https://pubs.lenovo.com/lxce-onecli/onecli_c_update

- **Lenovo XClarity Essentials UpdateXpress**

Lenovo XClarity Essentials UpdateXpress provides most of OneCLI update functions through a graphical user interface (GUI). It can be used to acquire and deploy Update Bundles (Service Packs) update packages and individual updates. Update Bundles (Service Packs) contain firmware and device driver updates for Microsoft Windows and for Linux.

You can obtain Lenovo XClarity Essentials UpdateXpress from the following location:

<https://datacentersupport.lenovo.com/solutions/Invo-xpress>

- **Lenovo XClarity Essentials Bootable Media Creator**

You can use Lenovo XClarity Essentials Bootable Media Creator to create bootable media that is suitable for firmware updates, VPD updates, inventory and FFDC collection, advanced system configuration, FoD Keys management, secure erase, RAID configuration, and diagnostics on supported servers.

You can obtain Lenovo XClarity Essentials BoMC from the following location:

<https://datacentersupport.lenovo.com/solutions/Invo-bomc>

- **Lenovo XClarity Administrator**

If you are managing multiple servers using the Lenovo XClarity Administrator, you can update firmware for all managed servers through that interface. Firmware management is simplified by assigning firmware-

compliance policies to managed endpoints. When you create and assign a compliance policy to managed endpoints, Lenovo XClarity Administrator monitors changes to the inventory for those endpoints and flags any endpoints that are out of compliance.

For additional information about using Lenovo XClarity Administrator to update firmware, see:

https://pubs.lenovo.com/lxca/update_fw

- **Lenovo XClarity Integrator offerings**

Lenovo XClarity Integrator offerings can integrate management features of Lenovo XClarity Administrator and your server with software used in a certain deployment infrastructure, such as VMware vCenter, Microsoft Admin Center, or Microsoft System Center.

For additional information about using Lenovo XClarity Integrator to update firmware, see:

<https://pubs.lenovo.com/lxci-overview/>

Configure the firmware

Several options are available to install and set up the firmware for the server.

Important: Lenovo does not recommend setting option ROMs to **Legacy**, but you can conduct this setting if necessary. Note that this setting prevents UEFI drivers for the slot devices from loading, which may cause negative side effects to Lenovo software, such as LXCA, OneCLI, and XCC. These side effects include but are not limited to the inability to determine adapter card details, such as model name and firmware levels. In some cases, the functionality on a specific PCIe adapter may not be enabled properly.

- **Lenovo XClarity Provisioning Manager (LXPM)**

From Lenovo XClarity Provisioning Manager, you can configure the UEFI settings for your server.

Notes: The Lenovo XClarity Provisioning Manager provides a Graphical User Interface to configure a server. The text-based interface to system configuration (the Setup Utility) is also available. From Lenovo XClarity Provisioning Manager, you can choose to restart the server and access the text-based interface. In addition, you can choose to make the text-based interface the default interface that is displayed when you start LXPM. To do this, go to **Lenovo XClarity Provisioning Manager → UEFI Setup → System Settings → <F1>Start Control → Text Setup**. To start the server with Graphic User Interface, select **Auto** or **Tool Suite**.

See the following documentations for more information:

- Search for the LXPM documentation version compatible with your server at <https://pubs.lenovo.com/lxpm-overview/>
- *UEFI User Guide* at <https://pubs.lenovo.com/uefi-overview/>

- **Lenovo XClarity Essentials OneCLI**

You can use the config application and commands to view the current system configuration settings and make changes to Lenovo XClarity Controller and UEFI. The saved configuration information can be used to replicate or restore other systems.

For information about configuring the server using Lenovo XClarity Essentials OneCLI, see:

https://pubs.lenovo.com/lxce-onecli/onecli_c_settings_info_commands

- **Lenovo XClarity Administrator**

You can quickly provision and pre-provision all of your servers using a consistent configuration. Configuration settings (such as local storage, I/O adapters, boot settings, firmware, ports, and Lenovo XClarity Controller and UEFI settings) are saved as a server pattern that can be applied to one or more

managed servers. When the server patterns are updated, the changes are automatically deployed to the applied servers.

Specific details about updating firmware using Lenovo XClarity Administrator are available at:

https://pubs.lenovo.com/lxca/server_configuring

- **Lenovo XClarity Controller**

You can configure the management processor for the server through the Lenovo XClarity Controller Web interface, the command-line interface, or Redfish API.

For information about configuring the server using Lenovo XClarity Controller, see:

“Configuring the Server” section in the XCC documentation compatible with your server at <https://pubs.lenovo.com/lxcc-overview/>

Memory module configuration

Memory performance depends on several variables, such as memory mode, memory speed, memory ranks, memory population and processor.

Information about optimizing memory performance and configuring memory is available at the Lenovo Press website:

<https://lenovopress.lenovo.com/servers/options/memory>

In addition, you can take advantage of a memory configurator, which is available at the following site:

https://dcsc.lenovo.com/#/memory_configuration

Enable Software Guard Extensions (SGX)

Intel® Software Guard Extensions (Intel® SGX) operates under the assumption that the security perimeter includes only the internals of the CPU package, and leaves the DRAM untrusted.

Complete the following steps to enable SGX.

- Step 1. **Make sure** to refer to “Memory module installation rules and order” section in the *User Guide* or *Hardware Maintenance Guide*, which specifies whether your server supports SGX and lists the memory module population sequence for SGX configuration. (DIMM configuration must be at least 8 DIMMs per socket to support SGX.)
- Step 2. Restart the system. Before the operating system starts up, press the key specified in the on-screen instructions to enter the Setup Utility. (For more information, see the “Startup” section in the LXPM documentation compatible with your server at <https://pubs.lenovo.com/lxpm-overview/>.)
- Step 3. Go to **System settings → Processors → Total Memory Encryption (TME)** and enable the option.
- Step 4. Save the changes, then go to **System settings → Processors → SW Guard Extension (SGX)** and enable the option.

RAID configuration

Using a Redundant Array of Independent Disks (RAID) to store data remains one of the most common and cost-efficient methods to increase server's storage performance, availability, and capacity.

RAID increases performance by allowing multiple drives to process I/O requests simultaneously. RAID can also prevent data loss in case of a drive failure by reconstructing (or rebuilding) the missing data from the failed drive using the data from the remaining drives.

RAID array (also known as RAID drive group) is a group of multiple physical drives that uses a certain common method to distribute data across the drives. A virtual drive (also known as virtual disk or logical drive) is a partition in the drive group that is made up of contiguous data segments on the drives. Virtual drive is presented up to the host operating system as a physical disk that can be partitioned to create OS logical drives or volumes.

An introduction to RAID is available at the following Lenovo Press website:

<https://lenovopress.lenovo.com/lp0578-lenovo-raid-introduction>

Detailed information about RAID management tools and resources is available at the following Lenovo Press website:

<https://lenovopress.lenovo.com/lp0579-lenovo-raid-management-tools-and-resources>

Deploy the operating system

Several options are available to deploy an operating system on the server.

Available operating systems

- Canonical Ubuntu
- Red Hat Enterprise Linux

Complete list of available operating systems: <https://lenovopress.lenovo.com/osig>.

Tool-based deployment

- **Multi-server**

Available tools:

- Lenovo XClarity Administrator

https://pubs.lenovo.com/lxca/compute_node_image_deployment

- **Single-server**

Available tools:

- Lenovo XClarity Provisioning Manager

“OS Installation” section in the LXPM documentation compatible with your server at <https://pubs.lenovo.com/lxpm-overview/>

Manual deployment

If you cannot access the above tools, follow the instructions below, download the corresponding OS *Installation Guide*, and deploy the operating system manually by referring to the guide.

1. Go to <https://datacentersupport.lenovo.com/solutions/server-os>.
2. Select an operating system from the navigation pane and click **Resources**.
3. Locate the “OS Install Guides” area and click the installation instructions. Then, follow the instructions to complete the operation system deployment task.

Back up the server configuration

After setting up the server or making changes to the configuration, it is a good practice to make a complete backup of the server configuration.

Make sure that you create backups for the following server components:

- **Management processor**

You can back up the management processor configuration through the Lenovo XClarity Controller interface. For details about backing up the management processor configuration, see:

“Backing up the BMC configuration” section in the XCC documentation compatible with your server at <https://pubs.lenovo.com/lxcc-overview/>.

Alternatively, you can use the `backup` command from Lenovo XClarity Essentials OneCLI to create a backup of all configuration settings. For more information about the `backup` command, see:

https://pubs.lenovo.com/lxce-onecli/config_backup

- **Operating system**

Use your backup methods to back up the operating system and user data for the server.

Appendix A. Getting help and technical assistance

If you need help, service, or technical assistance or just want more information about Lenovo products, you will find a wide variety of sources available from Lenovo to assist you.

On the World Wide Web, up-to-date information about Lenovo systems, optional devices, services, and support are available at:

<http://datacentersupport.lenovo.com>

Note: IBM is Lenovo's preferred service provider for ThinkSystem.

Before you call

Before you call, there are several steps that you can take to try and solve the problem yourself. If you decide that you do need to call for assistance, gather the information that will be needed by the service technician to more quickly resolve your problem.

Attempt to resolve the problem yourself

You can solve many problems without outside assistance by following the troubleshooting procedures that Lenovo provides in the online help or in the Lenovo product documentation. The online help also describes the diagnostic tests that you can perform. The documentation for most systems, operating systems, and programs contains troubleshooting procedures and explanations of error messages and error codes. If you suspect a software problem, see the documentation for the operating system or program.

You can find the product documentation for your ThinkSystem products at the following location:

<https://pubs.lenovo.com/>

You can take these steps to try to solve the problem yourself:

- Check all cables to make sure that they are connected.
- Check the power switches to make sure that the system and any optional devices are turned on.
- Check for updated software, firmware, and operating-system device drivers for your Lenovo product. (See the following links) The Lenovo Warranty terms and conditions state that you, the owner of the Lenovo product, are responsible for maintaining and updating all software and firmware for the product (unless it is covered by an additional maintenance contract). Your service technician will request that you upgrade your software and firmware if the problem has a documented solution within a software upgrade.
 - Drivers and software downloads
 - <https://datacentersupport.lenovo.com/tw/en/products/servers/thinksystem/sr680av4/7dmk/downloads/driver-list/>
 - Operating system support center
 - <https://datacentersupport.lenovo.com/solutions/server-os>
 - Operating system installing instructions
 - <https://pubs.lenovo.com/thinkedge#os-installation>
- If you have installed new hardware or software in your environment, check <https://serverproven.lenovo.com> to make sure that the hardware and software are supported by your product.
- Refer to “Problem Determination” in *User Guide* or *Hardware Maintenance Guide* for instructions on isolating and solving issues.

- Go to <http://datacentersupport.lenovo.com> and check for information to help you solve the problem.

To find the Tech Tips available for your server:

1. Go to <http://datacentersupport.lenovo.com> and navigate to the support page for your server.
2. Click on **How To's** from the navigation pane.
3. Click **Article Type** → **Solution** from the drop-down menu.

Follow the on-screen instructions to choose the category for the problem that you are having.

- Check Lenovo Data Center Forum at https://forums.lenovo.com/t5/Datacenter-Systems/ct-p/sv_eg to see if someone else has encountered a similar problem.

Gathering information needed to call Support

If you require warranty service for your Lenovo product, the service technicians will be able to assist you more efficiently if you prepare the appropriate information before you call. You can also go to <http://datacentersupport.lenovo.com/warrantylookup> for more information about your product warranty.

Gather the following information to provide to the service technician. This data will help the service technician quickly provide a solution to your problem and ensure that you receive the level of service for which you might have contracted.

- Hardware and Software Maintenance agreement contract numbers, if applicable
- Machine type number (Lenovo 4-digit machine identifier). Machine type number can be found on the ID label, see “[Identify the server and access the Lenovo XClarity Controller](#)” on page 39.
- Model number
- Serial number
- Current system UEFI and firmware levels
- Other pertinent information such as error messages and logs

As an alternative to calling Lenovo Support, you can go to <https://support.lenovo.com/servicerequest> to submit an Electronic Service Request. Submitting an Electronic Service Request will start the process of determining a solution to your problem by making the pertinent information available to the service technicians. The Lenovo service technicians can start working on your solution as soon as you have completed and submitted an Electronic Service Request.

Collecting service data

To clearly identify the root cause of a server issue or at the request of Lenovo Support, you might need collect service data that can be used for further analysis. Service data includes information such as event logs and hardware inventory.

Service data can be collected through the following tools:

- **Lenovo XClarity Provisioning Manager**

Use the Collect Service Data function of Lenovo XClarity Provisioning Manager to collect system service data. You can collect existing system log data or run a new diagnostic to collect new data.

- **Lenovo XClarity Controller**

You can use the Lenovo XClarity Controller web interface or the CLI to collect service data for the server. The file can be saved and sent to Lenovo Support.

- For more information about using the web interface to collect service data, see the “Backing up the BMC configuration” section in the XCC documentation compatible with your server at <https://pubs.lenovo.com/lxcc-overview/>.

- For more information about using the CLI to collect service data, see the “XCC `servicelog` command” section in the XCC documentation compatible with your server at <https://pubs.lenovo.com/lxcc-overview/>.

- **Lenovo XClarity Administrator**

Lenovo XClarity Administrator can be set up to collect and send diagnostic files automatically to Lenovo Support when certain serviceable events occur in Lenovo XClarity Administrator and the managed endpoints. You can choose to send diagnostic files to Lenovo Support using Call Home or to another service provider using SFTP. You can also manually collect diagnostic files, open a problem record, and send diagnostic files to the Lenovo Support.

You can find more information about setting up automatic problem notification within the Lenovo XClarity Administrator at https://pubs.lenovo.com/lxca/admin_setupcallhome.

- **Lenovo XClarity Essentials OneCLI**

Lenovo XClarity Essentials OneCLI has inventory application to collect service data. It can run both in-band and out-of-band. When running in-band within the host operating system on the server, OneCLI can collect information about the operating system, such as the operating system event log, in addition to the hardware service data.

To obtain service data, you can run the `getinfor` command. For more information about running the `getinfor`, see https://pubs.lenovo.com/lxce-onecli/onecli_r_getinfor_command.

Contacting Support

You can contact Support to obtain help for your issue.

You can receive hardware service through a Lenovo Authorized Service Provider. To locate a service provider authorized by Lenovo to provide warranty service, go to <https://datacentersupport.lenovo.com/serviceprovider> and use filter searching for different countries. For Lenovo support telephone numbers, see <https://datacentersupport.lenovo.com/supportphonenumberlist> for your region support details.

Appendix B. Documents and supports

This section provides handy documents, driver and firmware downloads, and support resources.

Documents download

This section provides introduction and download link for handy documents.

Documents

Download the following product documentations at:

https://pubs.lenovo.com/sr680a-v4/pdf_files.html

- **Rail Installation Guides**
 - Rail installation in a rack
- **User Guide**
 - Complete overview, system configuration, hardware components replacing, and troubleshooting.

Selected chapters from *User Guide*:

 - **System Configuration Guide** : Server overview, components identification, system LEDs and diagnostics display, product unboxing, setting up and configuring the server.
 - **Hardware Maintenance Guide** : Installing hardware components, cable routing, and troubleshooting.
- **Cable Routing Guide**
 - Cable routing information.
- **Messages and Codes Reference**
 - XClarity Controller, LXPM, and uEFI events
- **UEFI Manual**
 - UEFI setting introduction

Support websites

This section provides driver and firmware downloads and support resources.

Support and downloads

- Drivers and Software download website for ThinkSystem SR680a V4
 - <https://datacentersupport.lenovo.com/tw/en/products/servers/thinksystem/sr680av4/7dmk/downloads/driver-list/>
- Lenovo Data Center Forum
 - https://forums.lenovo.com/t5/Datacenter-Systems/ct-p/sv_eg
- Lenovo Data Center Support for ThinkSystem SR680a V4
 - <https://datacentersupport.lenovo.com/products/servers/thinksystem/sr680av3/7dm9>
- Lenovo License Information Documents
 - <https://datacentersupport.lenovo.com/documents/Invo-eula>

- Lenovo Press website (Product Guides/Datasheets/White papers)
 - <https://lenovopress.lenovo.com/>
- Lenovo Privacy Statement
 - <https://www.lenovo.com/privacy>
- Lenovo Product Security Advisories
 - https://datacentersupport.lenovo.com/product_security/home
- Lenovo Product Warranty Plans
 - <http://datacentersupport.lenovo.com/warrantylookup>
- Lenovo Server Operating Systems Support Center website
 - <https://datacentersupport.lenovo.com/solutions/server-os>
- Lenovo ServerProven website (Options compatibility lookup)
 - <https://serverproven.lenovo.com>
- Operating System Installation Instructions
 - <https://pubs.lenovo.com/thinkedge#os-installation>
- Submit an eTicket (service request)
 - <https://support.lenovo.com/servicerequest>
- Subscribe to Lenovo Data Center Group product notifications (Stay up to date on firmware updates)
 - <https://datacentersupport.lenovo.com/solutions/ht509500>

Appendix C. Notices

Lenovo may not offer the products, services, or features discussed in this document in all countries. Consult your local Lenovo representative for information on the products and services currently available in your area.

Any reference to a Lenovo product, program, or service is not intended to state or imply that only that Lenovo product, program, or service may be used. Any functionally equivalent product, program, or service that does not infringe any Lenovo intellectual property right may be used instead. However, it is the user's responsibility to evaluate and verify the operation of any other product, program, or service.

Lenovo may have patents or pending patent applications covering subject matter described in this document. The furnishing of this document is not an offer and does not provide a license under any patents or patent applications. You can send inquiries in writing to the following:

*Lenovo (United States), Inc.
8001 Development Drive
Morrisville, NC 27560
U.S.A.
Attention: Lenovo Director of Licensing*

LENOVO PROVIDES THIS PUBLICATION "AS IS" WITHOUT WARRANTY OF ANY KIND, EITHER EXPRESS OR IMPLIED, INCLUDING, BUT NOT LIMITED TO, THE IMPLIED WARRANTIES OF NON-INFRINGEMENT, MERCHANTABILITY OR FITNESS FOR A PARTICULAR PURPOSE. Some jurisdictions do not allow disclaimer of express or implied warranties in certain transactions, therefore, this statement may not apply to you.

This information could include technical inaccuracies or typographical errors. Changes are periodically made to the information herein; these changes will be incorporated in new editions of the publication. Lenovo may make improvements and/or changes in the product(s) and/or the program(s) described in this publication at any time without notice.

The products described in this document are not intended for use in implantation or other life support applications where malfunction may result in injury or death to persons. The information contained in this document does not affect or change Lenovo product specifications or warranties. Nothing in this document shall operate as an express or implied license or indemnity under the intellectual property rights of Lenovo or third parties. All information contained in this document was obtained in specific environments and is presented as an illustration. The result obtained in other operating environments may vary.

Lenovo may use or distribute any of the information you supply in any way it believes appropriate without incurring any obligation to you.

Any references in this publication to non-Lenovo Web sites are provided for convenience only and do not in any manner serve as an endorsement of those Web sites. The materials at those Web sites are not part of the materials for this Lenovo product, and use of those Web sites is at your own risk.

Any performance data contained herein was determined in a controlled environment. Therefore, the result obtained in other operating environments may vary significantly. Some measurements may have been made on development-level systems and there is no guarantee that these measurements will be the same on generally available systems. Furthermore, some measurements may have been estimated through extrapolation. Actual results may vary. Users of this document should verify the applicable data for their specific environment.

Trademarks

LENOVO, THINKSYSTEM, Flex System, System x, NeXtScale System, xArchitecture, ThinkEdge, and Neptune are trademarks of Lenovo.

Intel and Intel Xeon are trademarks of Intel Corporation in the United States, other countries, or both.

Internet Explorer, Microsoft, and Windows are trademarks of the Microsoft group of companies.

Linux is a registered trademark of Linus Torvalds.

All other trademarks are the property of their respective owners. © 2018 Lenovo.

Important notes

Processor speed indicates the internal clock speed of the processor; other factors also affect application performance.

CD or DVD drive speed is the variable read rate. Actual speeds vary and are often less than the possible maximum.

When referring to processor storage, real and virtual storage, or channel volume, KB stands for 1 024 bytes, MB stands for 1 048 576 bytes, and GB stands for 1 073 741 824 bytes.

When referring to hard disk drive capacity or communications volume, MB stands for 1 000 000 bytes, and GB stands for 1 000 000 000 bytes. Total user-accessible capacity can vary depending on operating environments.

Maximum internal hard disk drive capacities assume the replacement of any standard hard disk drives and population of all hard-disk-drive bays with the largest currently supported drives that are available from Lenovo.

Maximum memory might require replacement of the standard memory with an optional memory module.

Each solid-state memory cell has an intrinsic, finite number of write cycles that the cell can incur. Therefore, a solid-state device has a maximum number of write cycles that it can be subjected to, expressed as total bytes written (TBW). A device that has exceeded this limit might fail to respond to system-generated commands or might be incapable of being written to. Lenovo is not responsible for replacement of a device that has exceeded its maximum guaranteed number of program/erase cycles, as documented in the Official Published Specifications for the device.

Lenovo makes no representations or warranties with respect to non-Lenovo products. Support (if any) for the non-Lenovo products is provided by the third party, not Lenovo.

Some software might differ from its retail version (if available) and might not include user manuals or all program functionality.

Electronic emission notices

When you attach a monitor to the equipment, you must use the designated monitor cable and any interference suppression devices that are supplied with the monitor.

Additional electronic emissions notices are available at:

Taiwan Region BSMI RoHS declaration

| 單元 Unit | 限用物質及其化學符號 Restricted substances and its chemical symbols | | | | | |
|---|--|---------------|---------------|---|-------------------------------------|---|
| | 鉛Lead (Pb) | 汞Mercury (Hg) | 鎘Cadmium (Cd) | 六價鉻 Hexavalent chromium (Cr ⁺⁶) | 多溴聯苯 Polybrominated biphenyls (PBB) | 多溴二苯醚 Polybrominated diphenyl ethers (PBDE) |
| 機架 | ○ | ○ | ○ | ○ | ○ | ○ |
| 外部蓋板 | ○ | ○ | ○ | ○ | ○ | ○ |
| 機械組零件 | — | ○ | ○ | ○ | ○ | ○ |
| 空氣傳動設備 | — | ○ | ○ | ○ | ○ | ○ |
| 冷卻組零件 | — | ○ | ○ | ○ | ○ | ○ |
| 內存模組 | — | ○ | ○ | ○ | ○ | ○ |
| 處理器模組 | — | ○ | ○ | ○ | ○ | ○ |
| 圖形處理器模組 | — | ○ | ○ | ○ | ○ | ○ |
| 電纜組零件 | — | ○ | ○ | ○ | ○ | ○ |
| 電源供應器 | — | ○ | ○ | ○ | ○ | ○ |
| 儲備設備 | — | ○ | ○ | ○ | ○ | ○ |
| 印刷電路板 | — | ○ | ○ | ○ | ○ | ○ |
| <p>備考1. “超出0.1 wt %”及“超出0.01 wt %”係指限用物質之百分比含量超出百分比含量基準值。 Note1 : “exceeding 0.1wt%” and “exceeding 0.01 wt%” indicate that the percentage content of the restricted substance exceeds the reference percentage value of presence condition.</p> <p>備考2. “○”係指該項限用物質之百分比含量未超出百分比含量基準值。 Note2 : “○”indicates that the percentage content of the restricted substance does not exceed the percentage of reference value of presence.</p> <p>備考3. “—”係指該項限用物質為排除項目。 Note3 : The “-” indicates that the restricted substance corresponds to the exemption.</p> | | | | | | |

0724

Taiwan Region import and export contact information

Contacts are available for Taiwan Region import and export information.

委製商/進口商名稱: 台灣聯想環球科技股份有限公司
 進口商地址: 台北市南港區三重路 66 號 8 樓
 進口商電話: 0800-000-702

